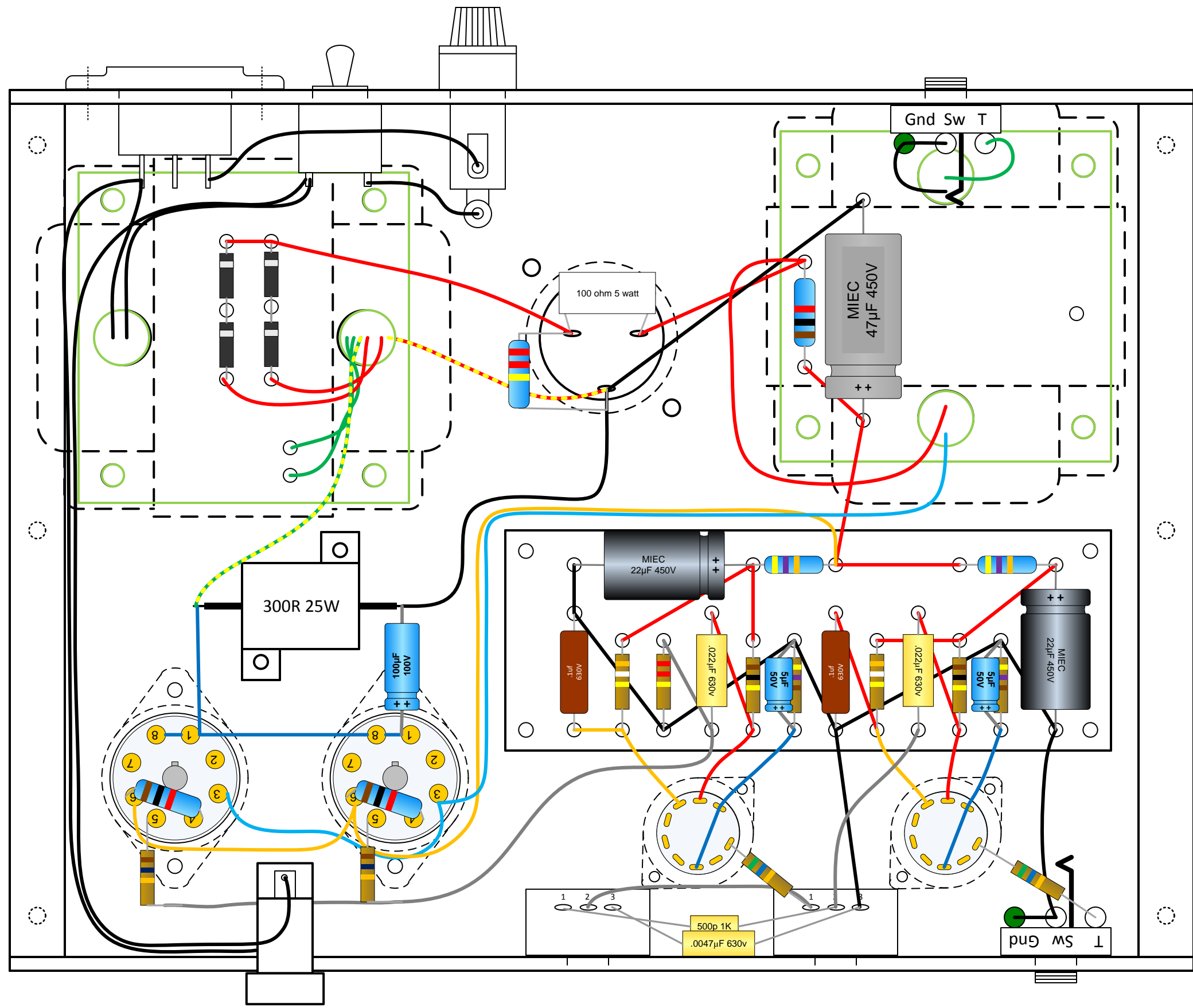


Power

2A SB
3AG Fuse

4 Ohm
Speaker

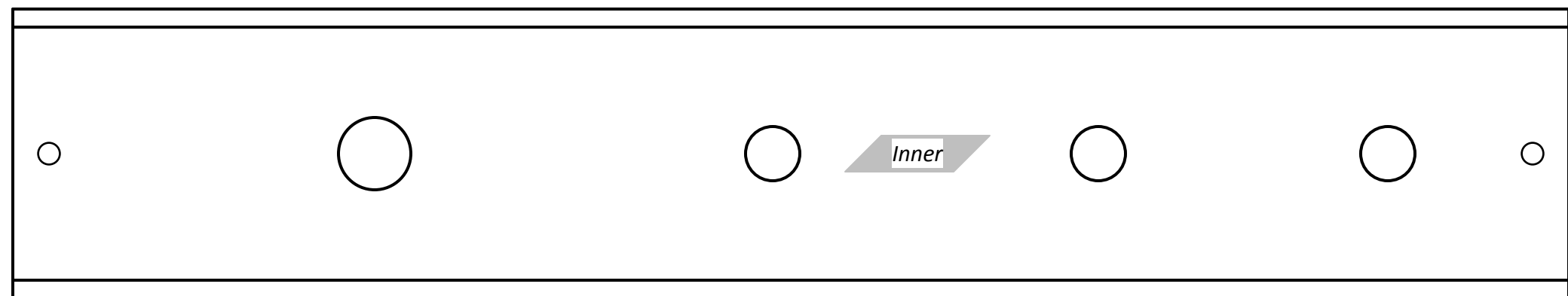


Power

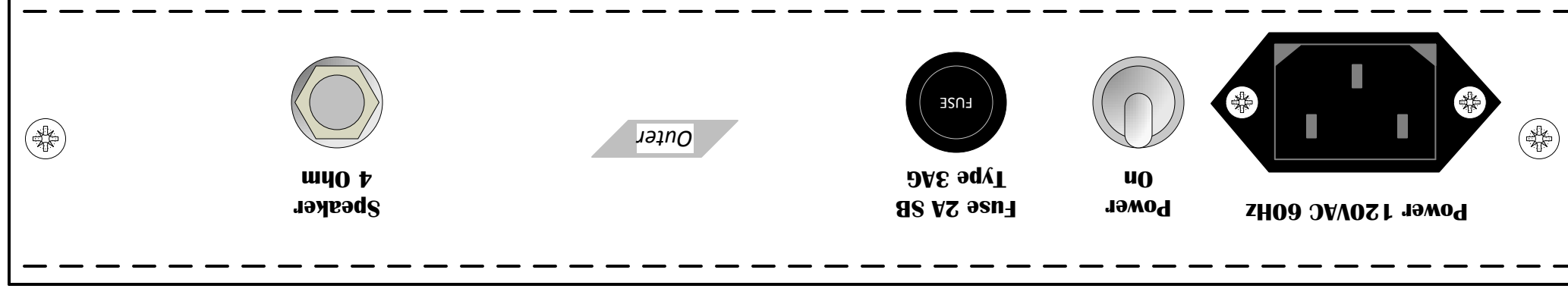
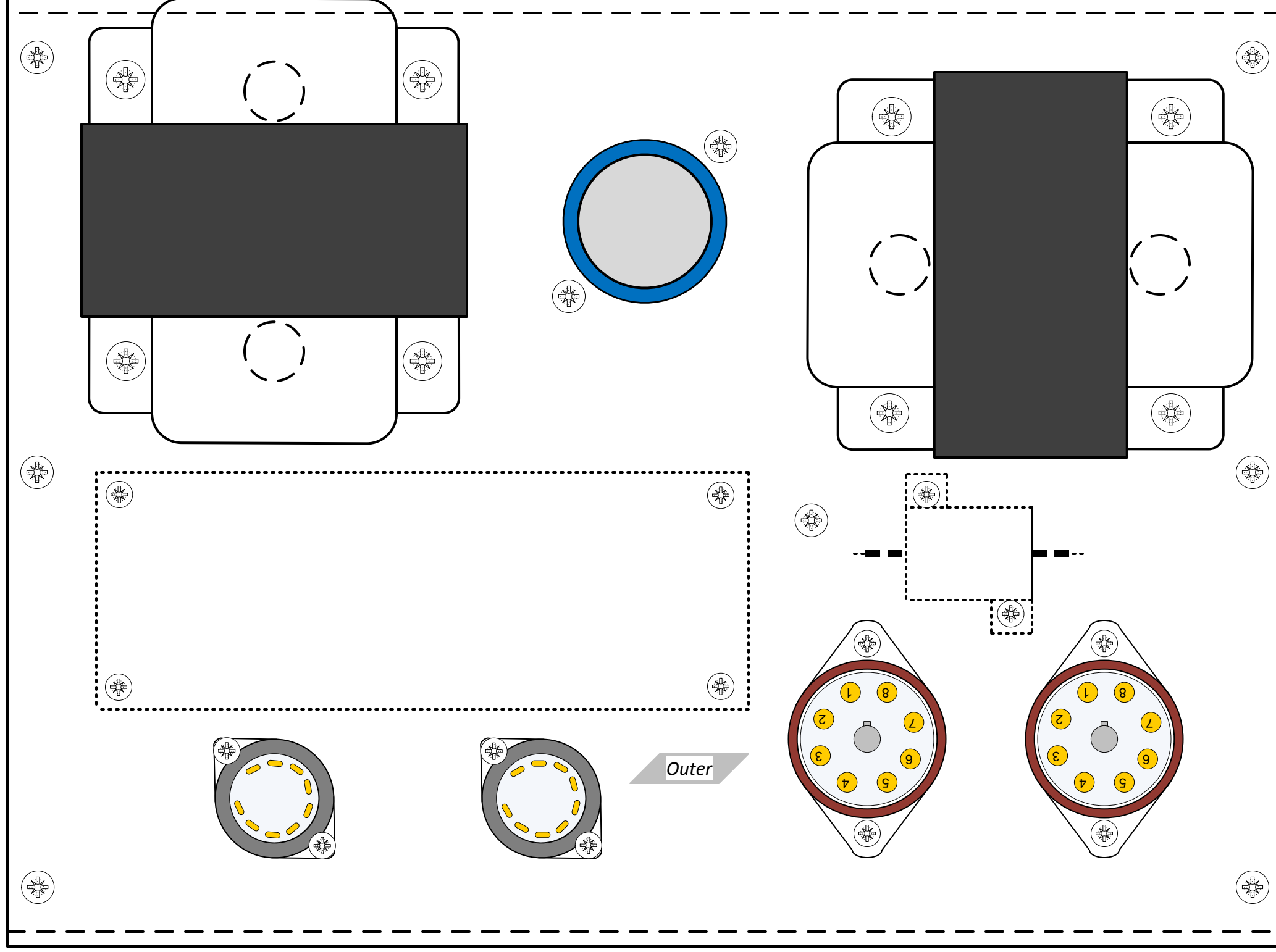
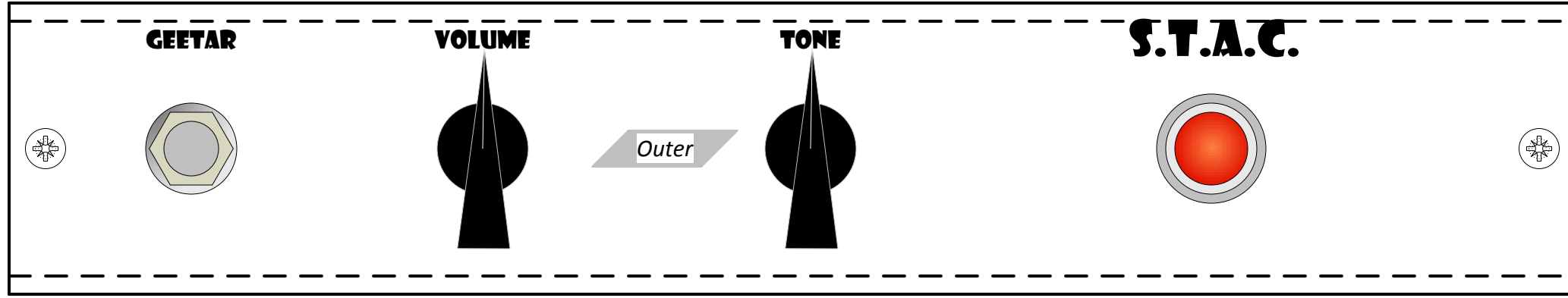
Tone

Vol

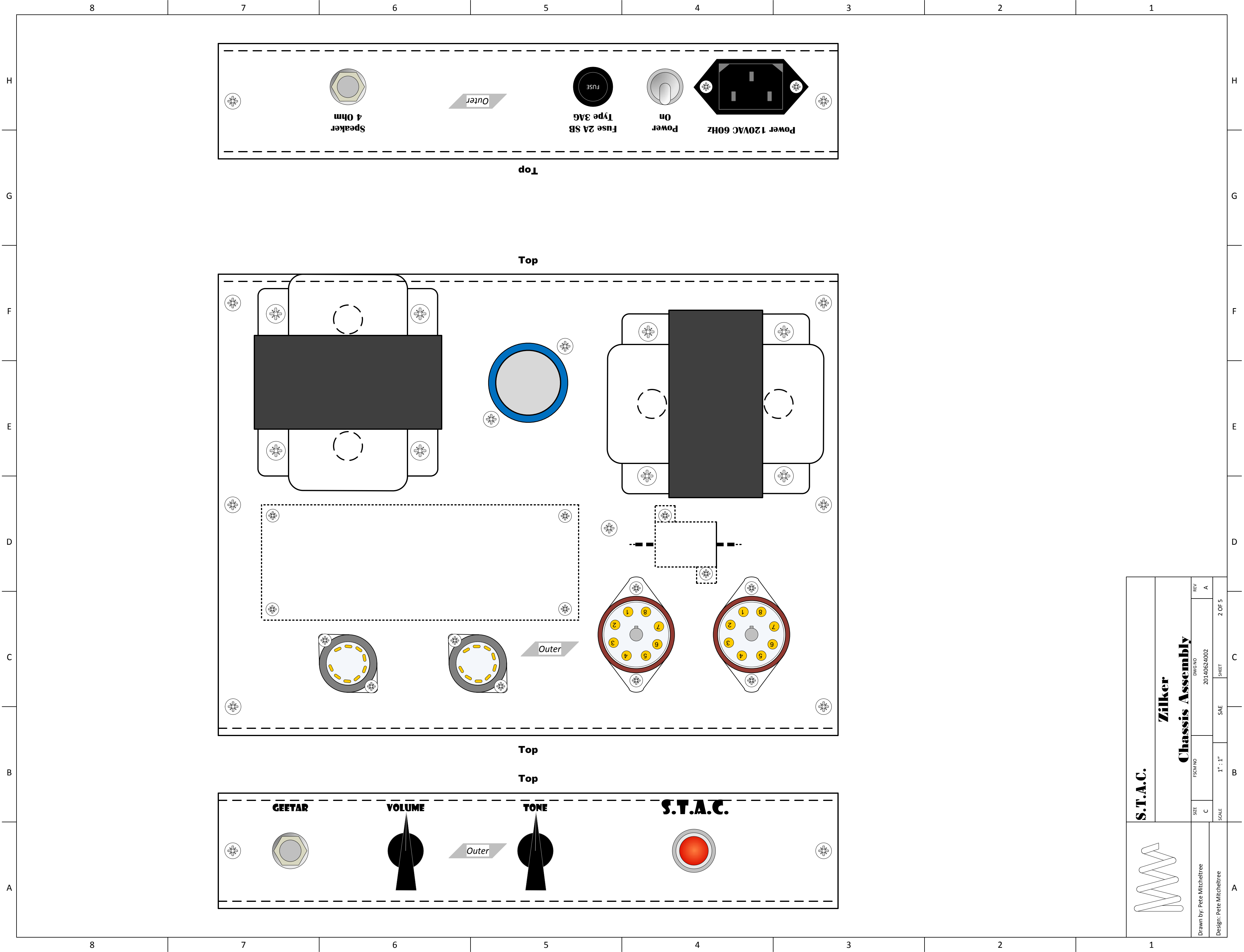
Input

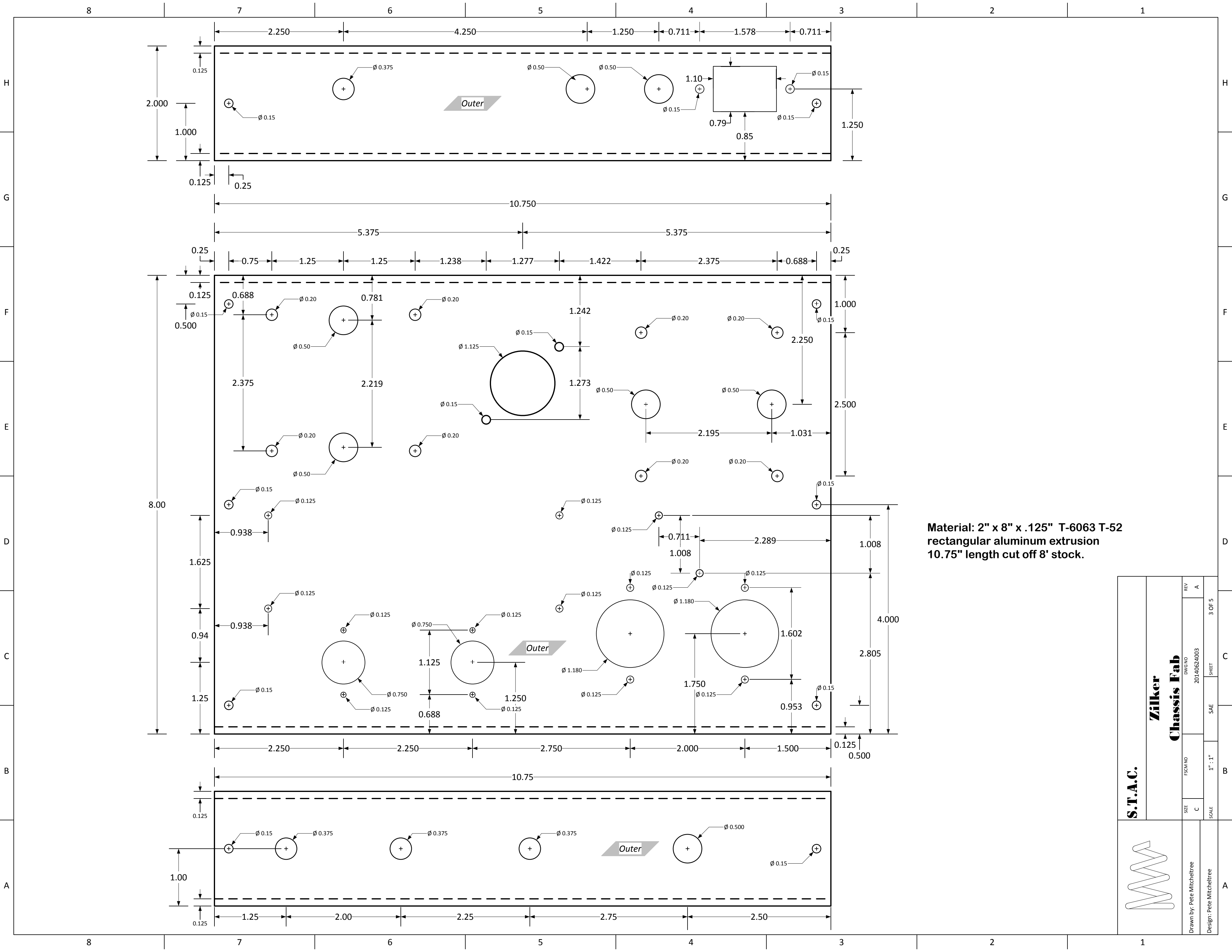


| | | | | | | |
|---------------------------|-----------------------------|---------------------|---------------|---------|-----------------------------|--------|
| | S.T.A.C. | | Zilker | | Wiring - Inside View | |
| | Drawn By: Pete Mitchelltree | DWG NO: 20140624001 | REV: A | SIZE: C | FSCM NO: 20140624001 | REV: A |
| Design: Pete Mitchelltree | SCALE: 1" = 1" | SCALE: SAE | SHEET: 1 OF 5 | | | |

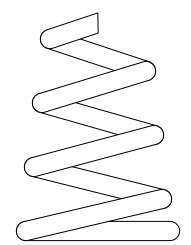


| | | | | | | |
|---------------------------|-----------------------------|-----------------------|---------------|------------------|-------------------------|--------|
| | S.T.A.C. | | Zilker | | Chassis Assembly | |
| | Drawn By: Pete Mitchelltree | DWG NO 20140624002 | REV A | SCALE 1" = 1" | SHEET 2 OF 5 | SAE |
| Design: Pete Mitchelltree | SIZE C | FSCM NO | SCALE | 1" = 1" | SHEET | 2 OF 5 |

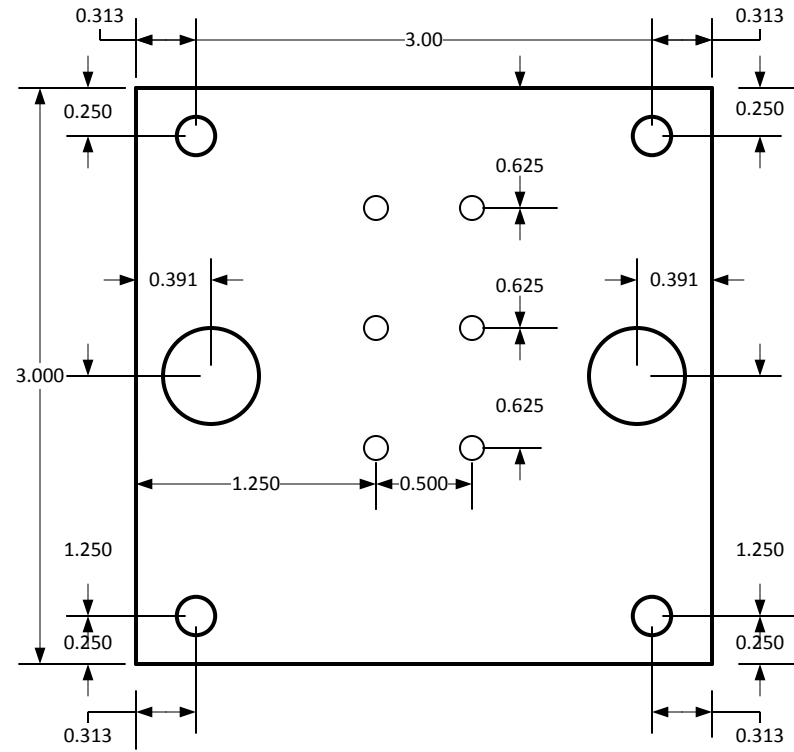




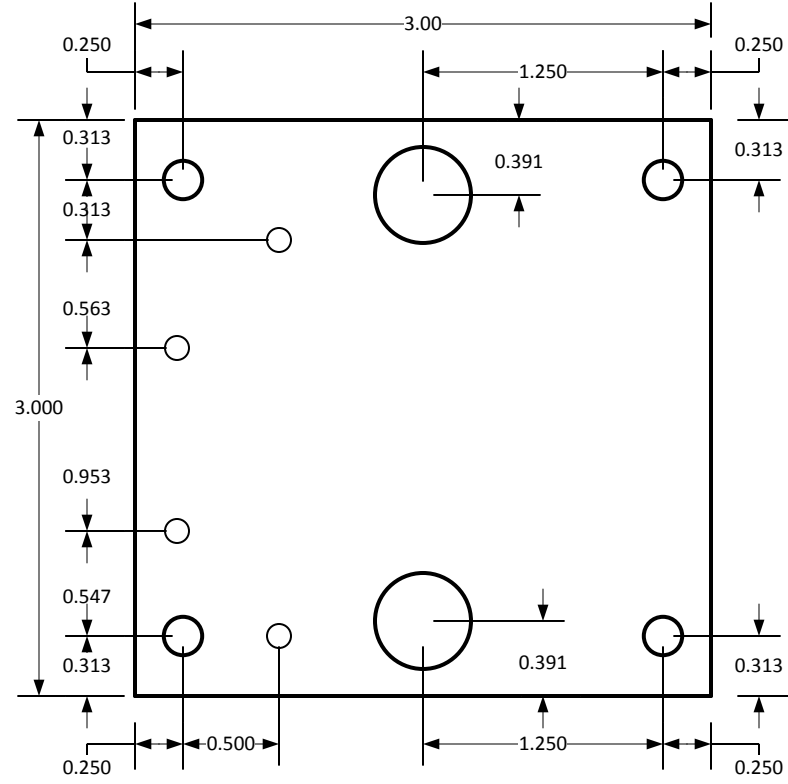
| | | | |
|----------|-----------------------|--------|-------------|
| S.T.A.C. | Zilker Chassis Fab | REV | A |
| | | DWG NO | 20140624003 |
| SIZE | C | SHEET | 3 OF 5 |
| SCALE | 1" = 1" | SAE | |



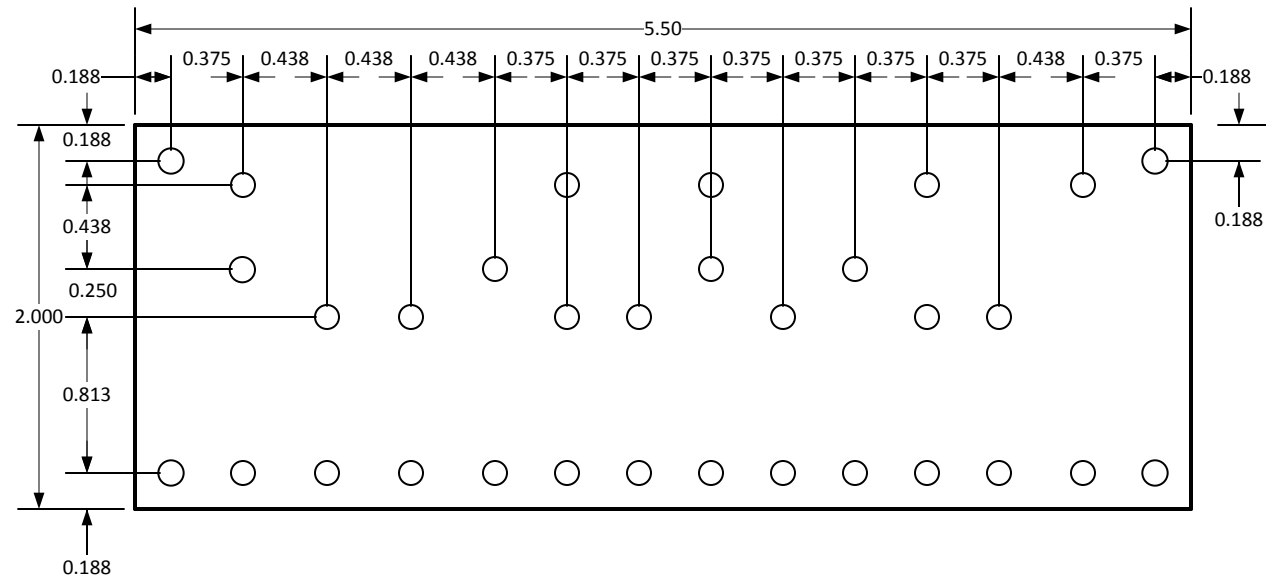
Drawn By: Pete Mitchelltree
Design: Pete Mitchelltree



PT Board

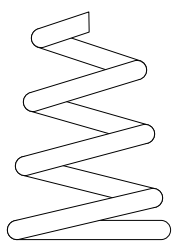


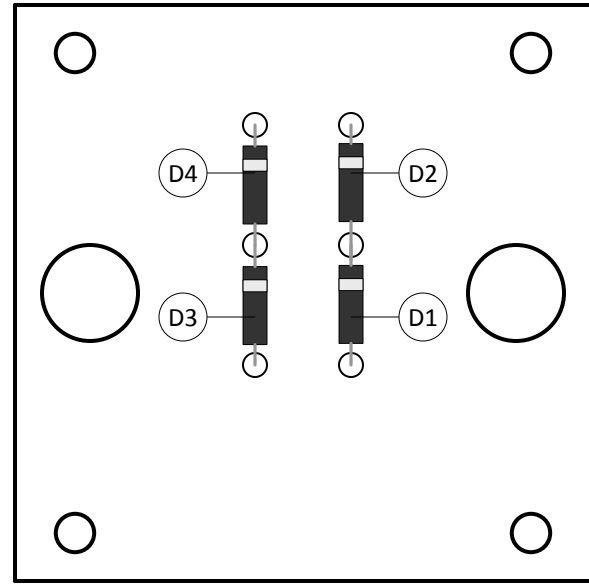
OT Board



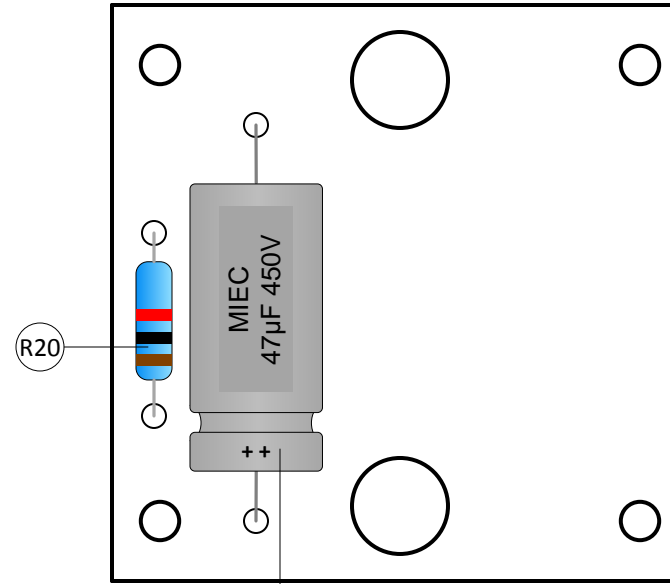
Main Board

Material: .125 mil Garolite (G-10)
 Eyelets: Hoffman 1/8"HS for 1/8" Material

| | | | |
|---|-----------------------------|----------------------------|-------------|
| S.T.A.C. | Zilker Board Fab | REV | A |
| | | DWG NO | 20140624004 |
| SIZE | B | SAE | 4 OF 5 |
| SCALE | 1" : 1" | SHEET | |
|  | | Drawn by: Pete Mitcheltree | |
| | | Design: Pete Mitcheltree | |

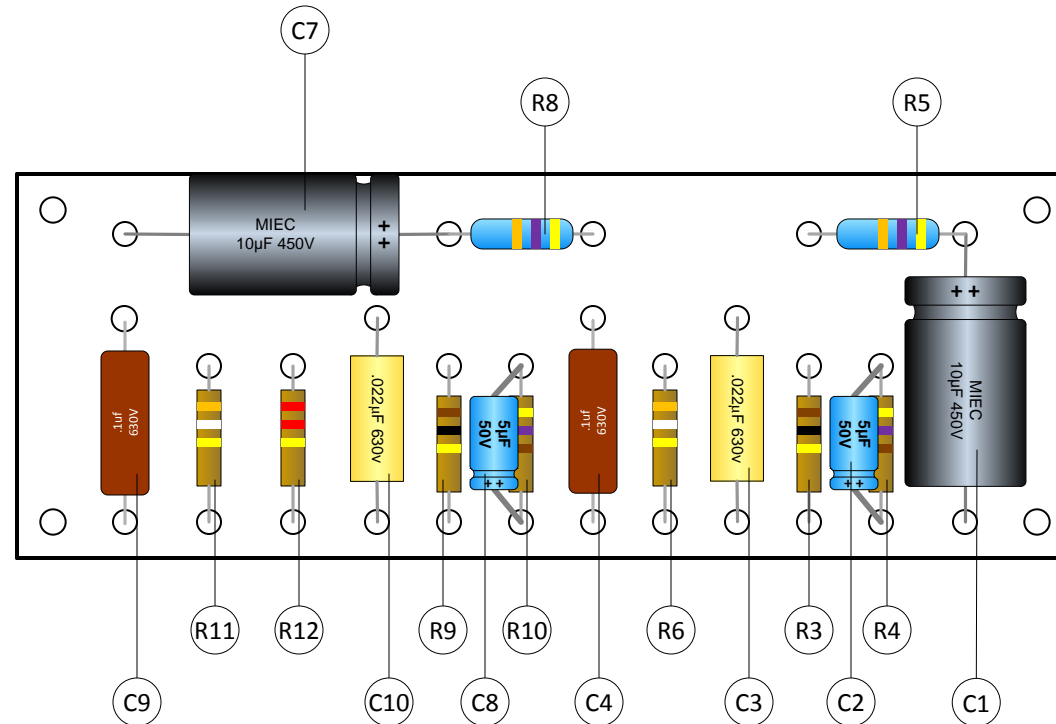


PT Board



OT Board

| Parts List: | |
|-------------|---|
| C1,C7 | - 10uF 450V axial electrolytic |
| C2,C8 | - 22uF 16V axial UCE electrolytic |
| C3,C10 | - 0.022uF 600V axial Mallory150 |
| C4,C9 | - 0.1uF 600V radial Xicon MPP |
| C14 | - 47uF 450V axial electrolytic |
| R3,R9 | - 100K 1W axial CF |
| R4,R10 | - 470R 1W axial CF |
| R5,R8 | - 47K 2W axial FP MF |
| R6,R11 | - 390K 1W axial CF |
| R12 | - 220K 1W axial CF |
| R20 | - 1K 2W axial FP MF |
| D1-D4 | - uF4007 1KPIV axial glass passivated rectifier |
| | |
| | |



Main Board

| | | | |
|------------------------------|------------------|------------------------|-------------------------------|
| S.T.A.C. | Zilker | Board Load | |
| | | FSCM NO 20140624005 | REV A |
| DRAWN BY Pete Mitcheltree | SCALE 1" : 1" | SHEET 5 OF 5 | DESIGN BY Pete Mitcheltree |