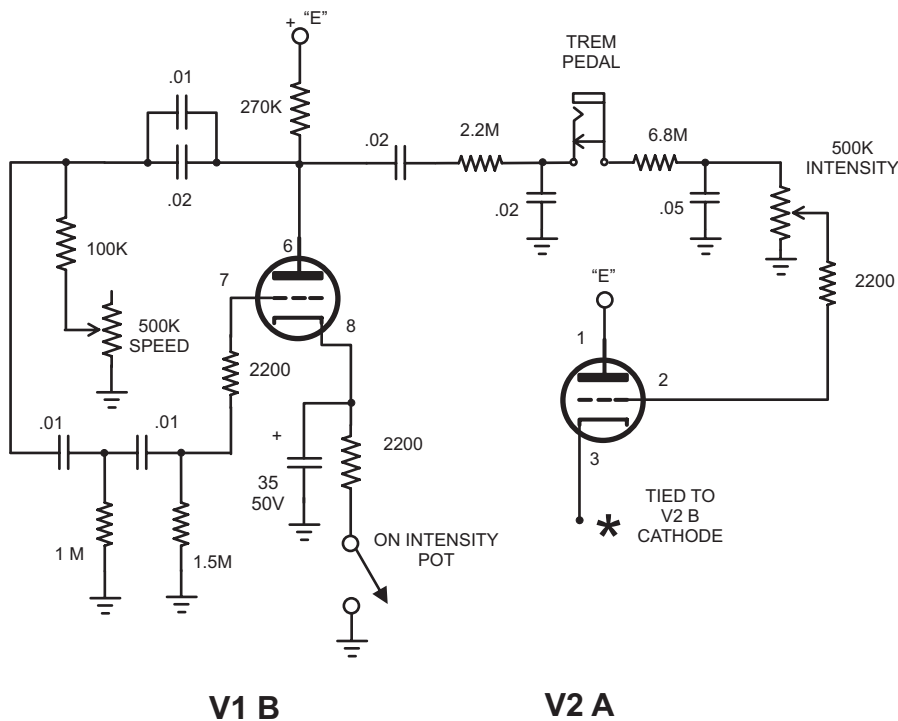


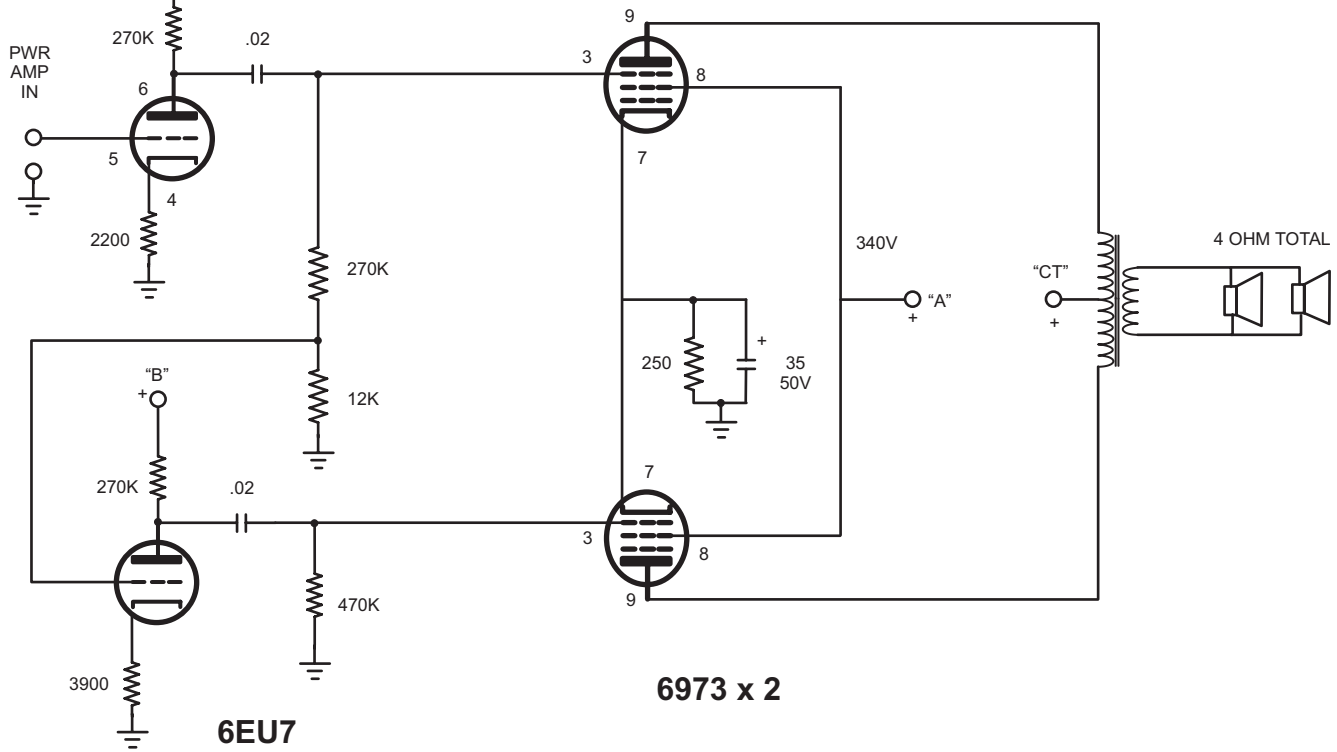
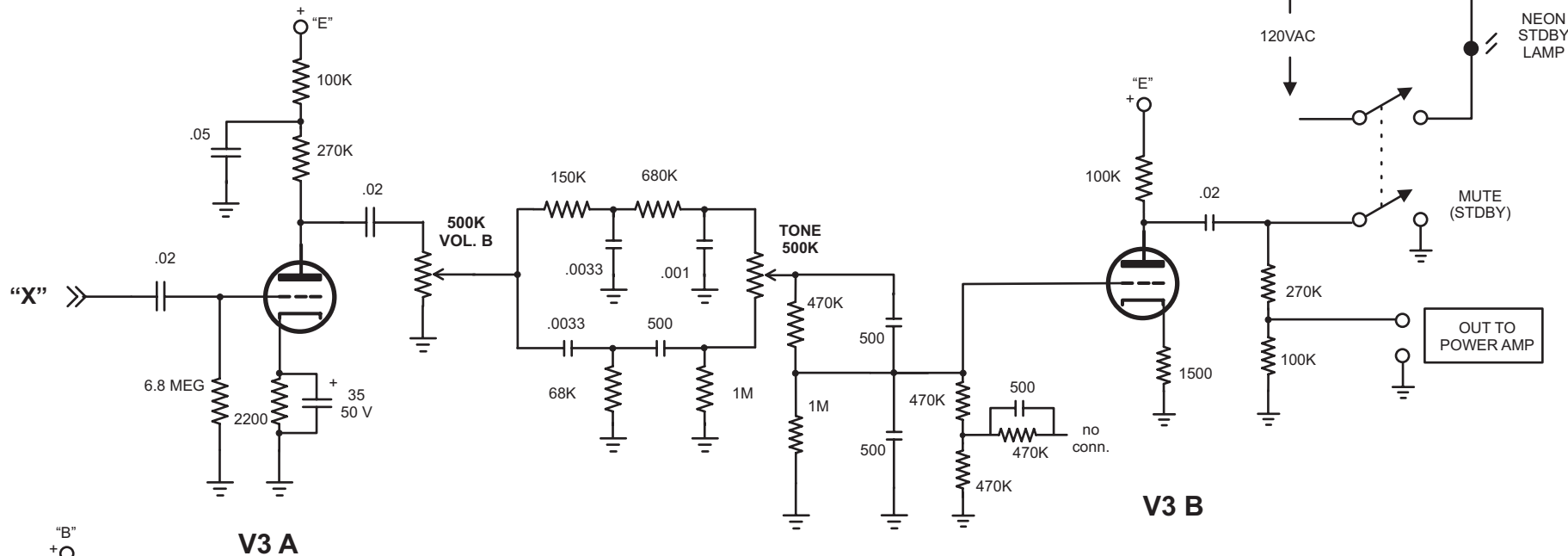
GRETSCH 6162
PAGE 1 OF 3

JEFF JOURARD 2006

TO "X"
ON PAGE 2

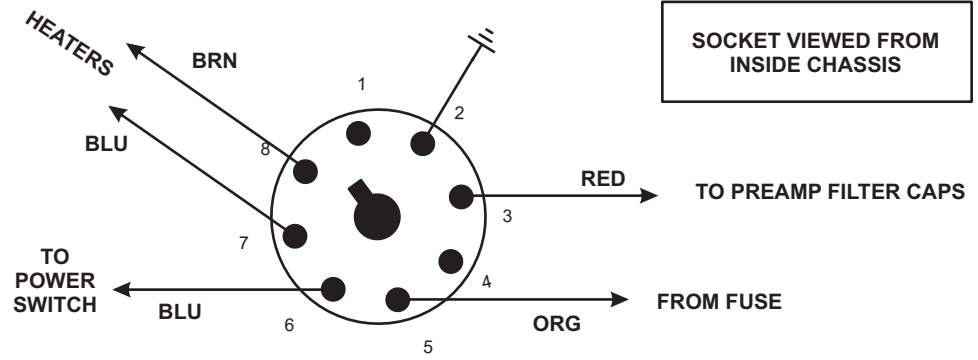
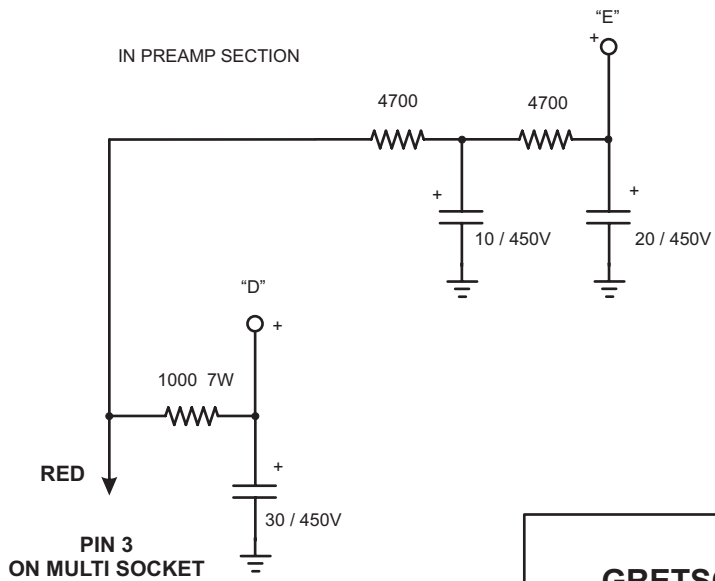


Notes: Resistors are 1/2 watt except where noted
 all .02 .01 .0033 and 500pf caps are ceramic disc
 all .05 are tubular 400V
 all 35uF electrolytics are 35V
 all power supply caps are 450v
 Cathode of V2A ties directly to cathode of V2B
Volume A and Volume B are ganged on same shaft
 V1A is not used at all
 After tone stack, there are a bunch of parts to receive output of a second channel that does not exist, no connection.
 Trem oscillator has an .03 made out of an .02 and an .01
 Power amp power supply uses a 20 and a 10 from the "can" capacitor to make a 30uF.
 Preamp tubes: 12AX7. Reverb driver: 6973.
 Power amp inverter/driver: 6EU7
 Power tubes: 6973. Rectifier: 5U4
 Standby is a mute switch, doesn't cut any power to tubes
 Standby light is lit when amp is in standby
 Drawn 9-8-2006 by Jeff Jourard from a working 1963 unit



**GRETSCH 6162
PAGE 2 OF 3**

JEFF JOURARD 2006



PIN 3
ON MULTI SOCKET

GRETSCH 6162
PAGE 3 OF 3

JEFF JOURARD 2006

GREEN WIRE
INSIDE MULTI
CABLE
CONNECTS TO
POINT "A" IN
POWER AMP

GREEN

