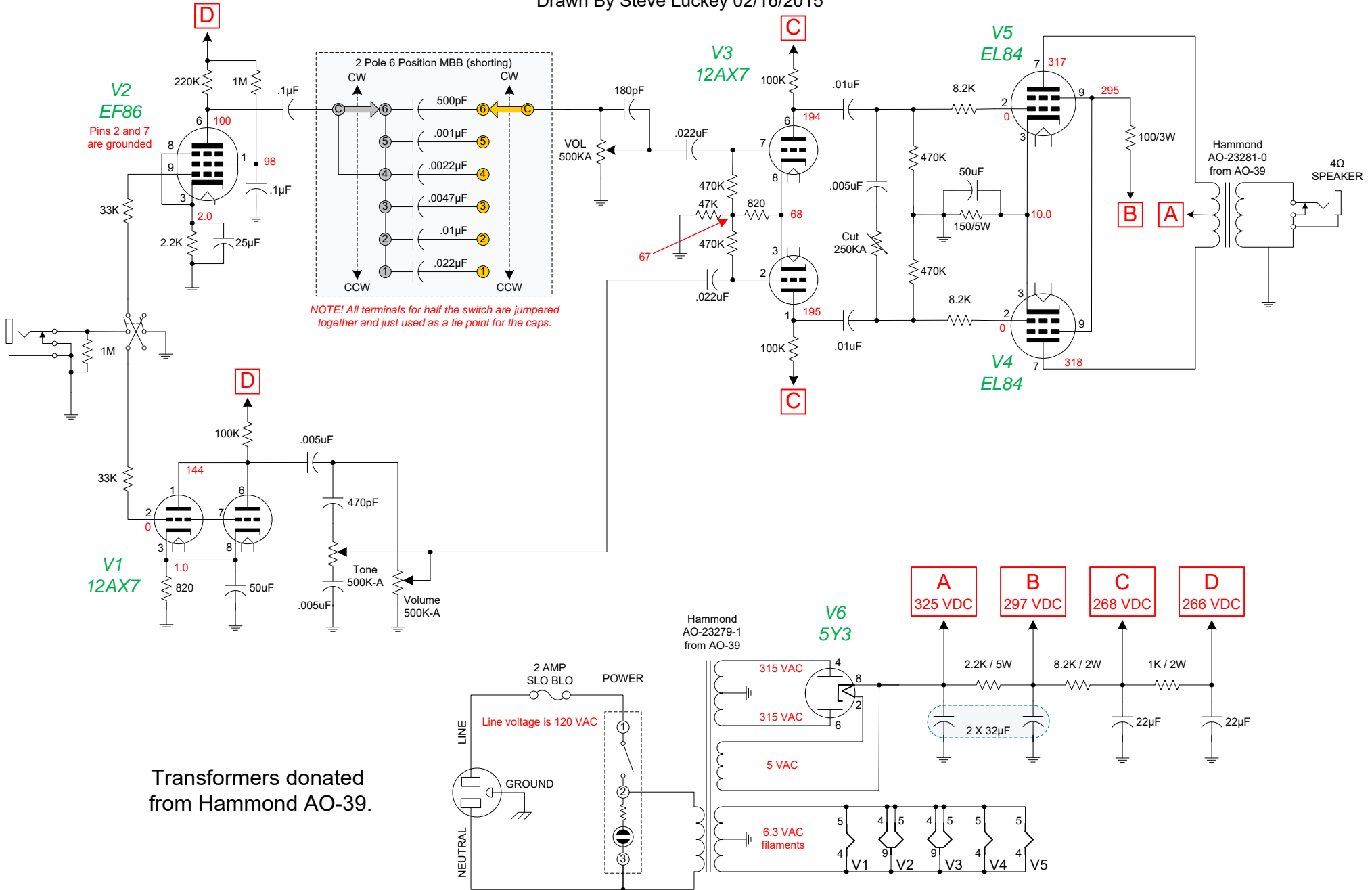


Dual Lite

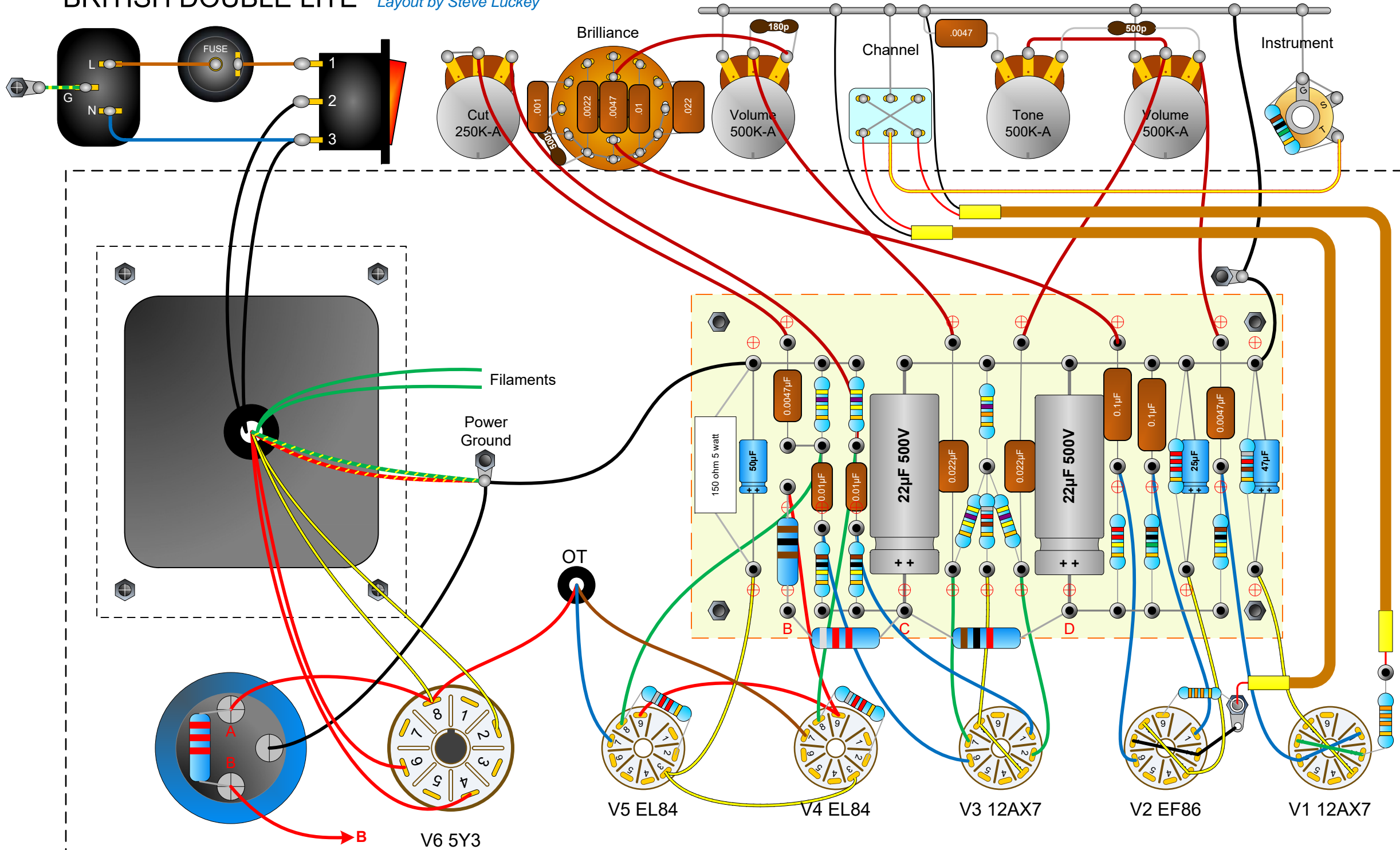
Vox AC-15 Lite plus 18W Lite IIB

Drawn By Steve Luckey 02/16/2015



Transformers donated from Hammond AO-39.

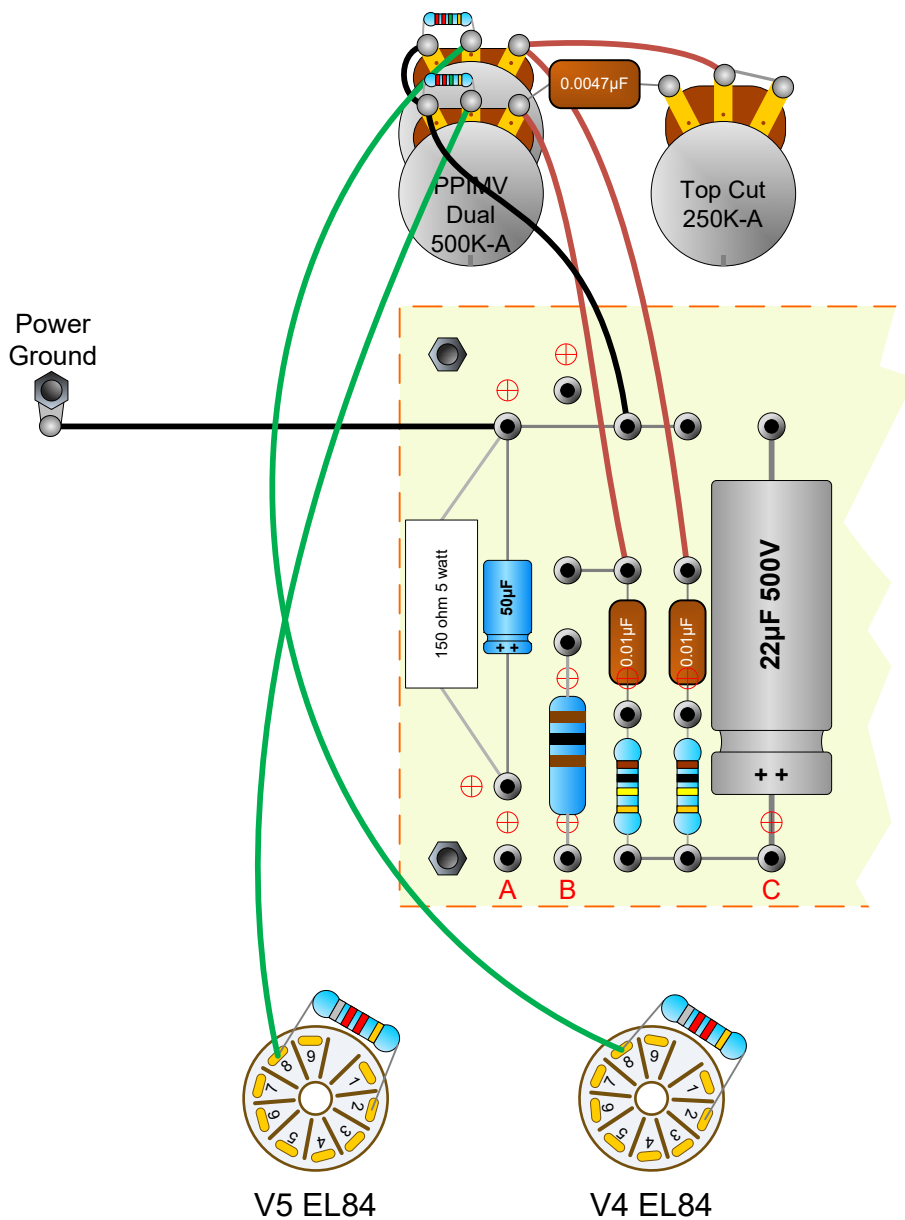
BRITISH DOUBLE LITE *Layout by Steve Luckey*

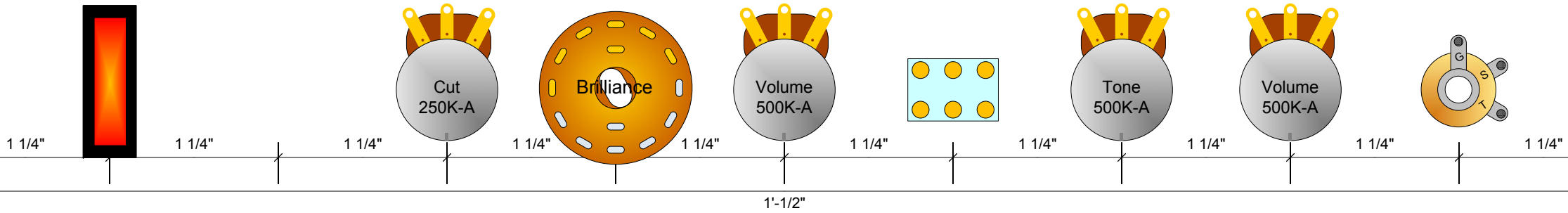


I don't have a Master Volume in this amp, but if I wanted one, this is how I would do it.

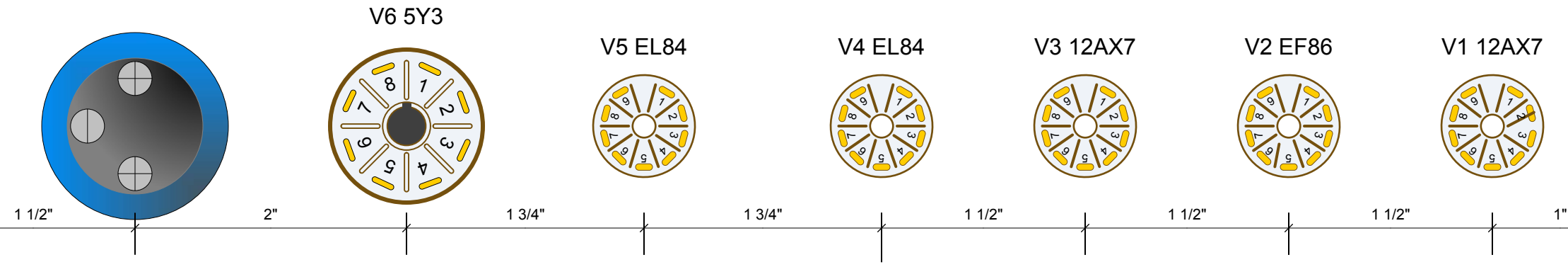
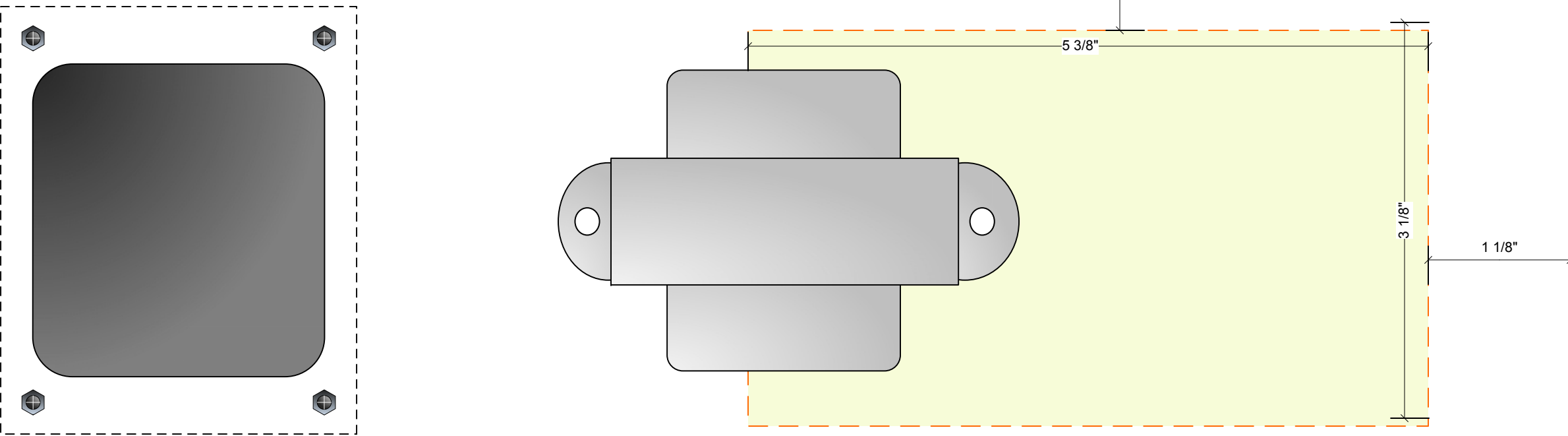
PPIMV mod

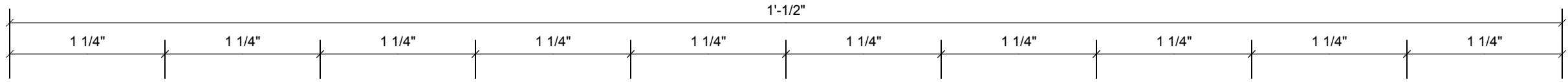
1. Remove two 470K grid resistors.
2. Relocate .0047 μ F cap to pots.
3. Connect PPIMV ground to PA Gnd.
4. Use shielded cable if wires are long.





Chassis Dimensions
12 1/2" X 6 1/2" X 2 1/2"

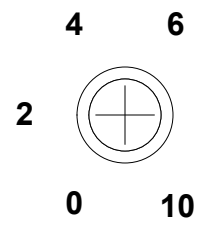




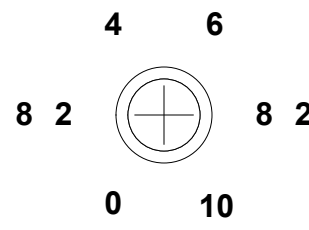
POWER



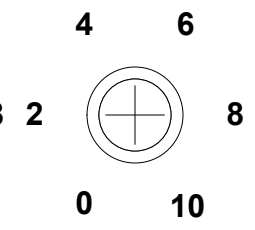
CUT



BRILLIANCE



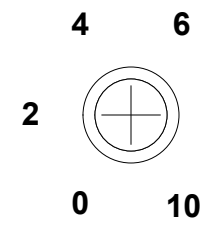
VOLUME



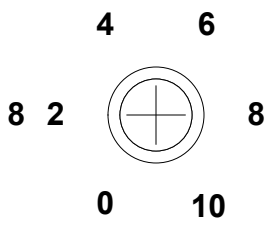
CHANNEL



tone



VOLUME



INSTRUMENT



VOX AC-15

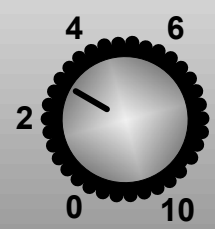
MARSHALL 18W

POWER

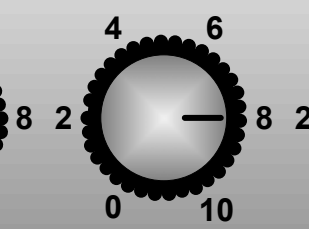


**DUAL
LITE**

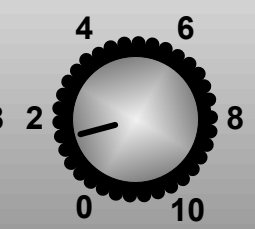
CUT



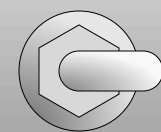
BRILLIANCE



VOLUME



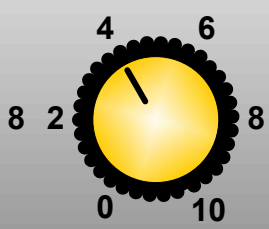
CHANNEL



tone



VOLUME

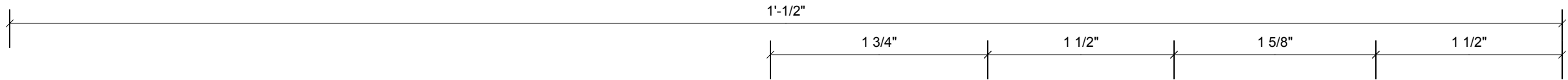


INSTRUMENT



VOX AC-15

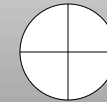
MARSHALL 18W



4Ω SPEAKER



2 AMP SLOW



POWER



4Ω SPEAKER



2 AMP SLOW



POWER

