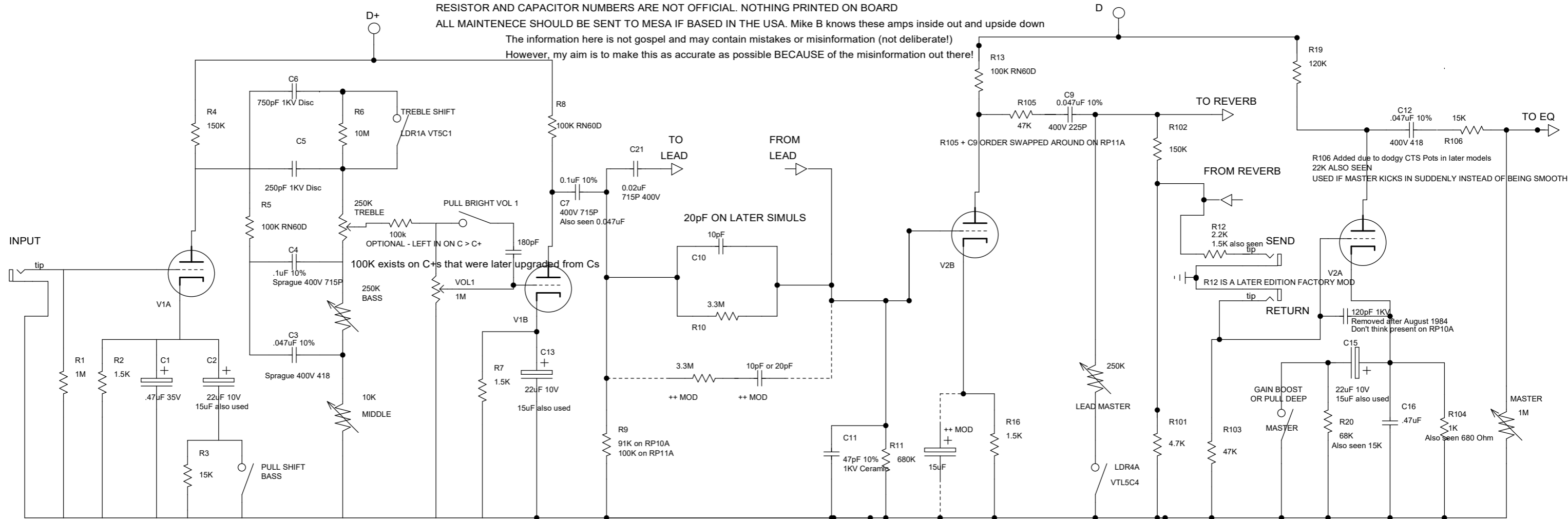


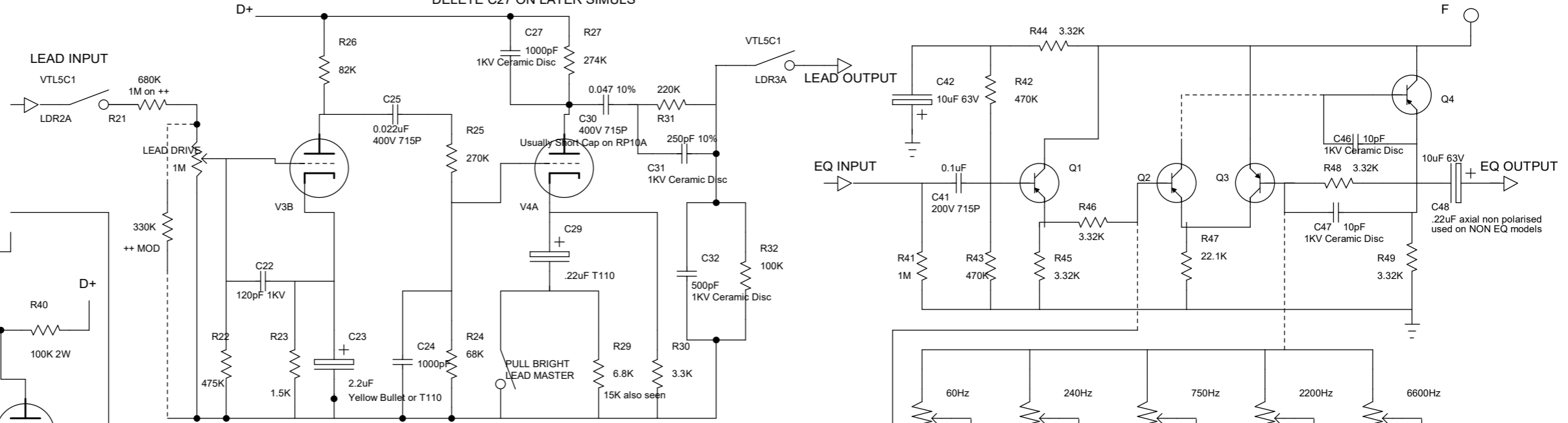
MESA BOOGIE MK IIC+ Schematic. Used for education and maintenance purposes. All rights belong to Mesa/Boogie Ltd.
 RESISTOR AND CAPACITOR NUMBERS ARE NOT OFFICIAL. NOTHING PRINTED ON BOARD
 ALL MAINTENECE SHOULD BE SENT TO MESA IF BASED IN THE USA. Mike B knows these amps inside out and upside down

The information here is not gospel and may contain mistakes or misinformation (not deliberate!)
 However, my aim is to make this as accurate as possible BECAUSE of the misinformation out there!

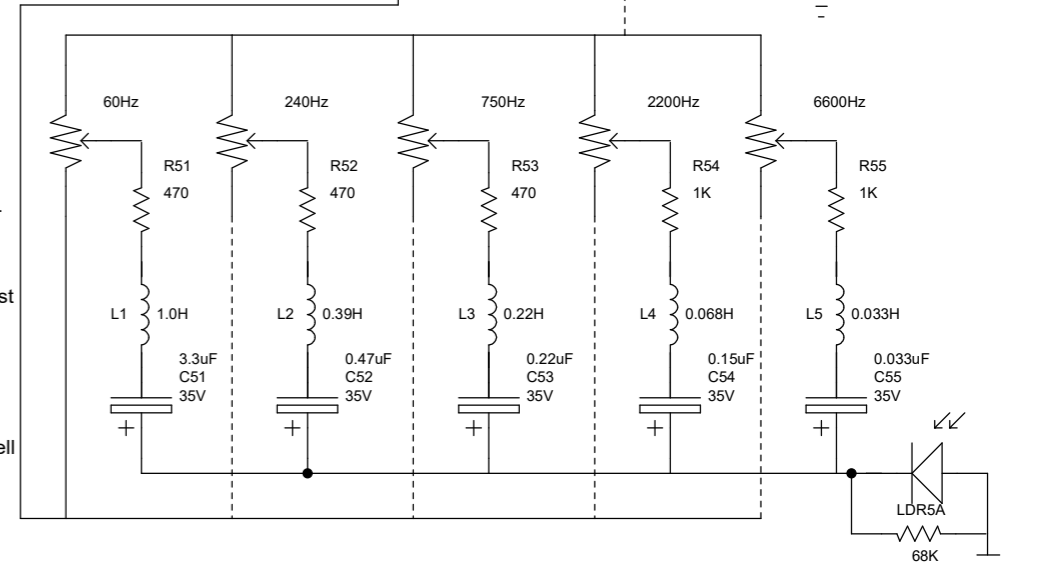


ALL CATHODE BYPASS CAPS ARE 15uF, 20uF OR 22uF. 22uF listed for simplicity here.
 Manufacture and type/voltage vary. Usually sprague or vishay
 Common ones are T322 and T110
 .47uF is usually a T110

DELETE C27 ON LATER SIMLS



MOD INFO:
 3 Mods offered by Mike B for a IIC+. ++ and switchable +/++. Phone Mesa for Mike B's prices. They're very reasonable.
 A C+ can be modded to a C++. The 12 factory switchables were SP11A, but I've seen some later DRG switchable +/++s
 For ++ hardwire in the values listed
 For switchable +/++ you need a relay and power for that relay like in the Mark III. The R2 channel is essentially a ++ boost
 Lead values for +/++ are hardwired in but the extra 3.3M/10 or 20pF and 15uF on V2B switched on/off via relay
 OTHER MODS (CUSTOM WORK)
 15uF on V2B on/off for a gain boost when combined with the 100K resistor between treble and volume pot.
 All credit goes to Boogiebabies regarding this mod. Add a massive gain boost. 'Fire breathing dragon' mod.
 Can be switched off from a Middle push/pull pot and/or footswitch. This is a poor mans switchable ++ but does the job well
 Could also piggyback off an LDR so it only activates in Lead Mode or something else fancy
 C27 added and C10 as 10pF on simul for reduced brightness
 R31/C31 can be replaced with bus wire for less lead brightness. Less metal more rock.
 R30 can be lowered for more lead gain. 1K or 1.5K works well.
 R11 can be lowered to 470K for more clean headroom without sacrificing lead gain too much



68K IS EQ POP FIX. FACTORY MOD. NOT PRESENT ON EARLY C+S

