

VDC

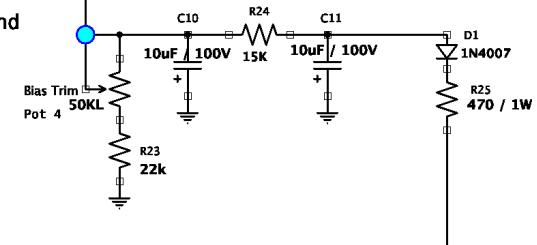
V1A-1:	180
V1A-3:	1.87
V1B-6:	181
V1B-8:	1.85
V2A-1:	152
V2A-3:	2.36
V2B-6:	230
V2B-8:	94.5
V3-3:	422.0
V3-4:	423.5
V4-3:	422.3
V4-4:	423.6

Line: 121 VAC

VDC	
Node A:	426.6
Node B:	424.9
Node C:	322.7
Node D:	304.0

Consider:

- Decrease R2 to 10k, and add 470pF to gnd
- Increase R20, 21 to 1 or 1.5k
- Decrease R35 to 68k or ?



Princeton 5881 NoRevNoTrem	
LongTailPairAmps.com	
Chris Held	Rev 4 2023-07-01