

*Note
Used Only One
Cliff Type Input
To Chassis
For RF Shunt

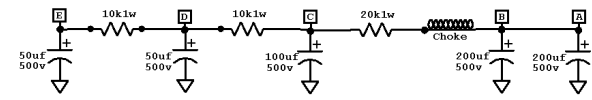
Preamp Tubes 12ax7

	1	2	3	6	7	8
V1	193.7	0	1.51	196.4	0	1.51
V2	162.6	0	1.02	278	162.6	162.9
V3	208	23.2	37.8	206	24.8	37.8

Power Tubes (E34L)

	1	2	3	4	5	6
V4			448	441	-39	-39
V5			448	441	-39	-39
V6			448	442	-40.7	-40.7
V7			448	442	-40.7	-40.7

A=
B=
C=
D=
E=
H= 6.3 vac



Hoffman 100 Watt Plexi		
with Hotswitch		
David Powell	Rev 1.0 11/28/09	Page #1 of 1