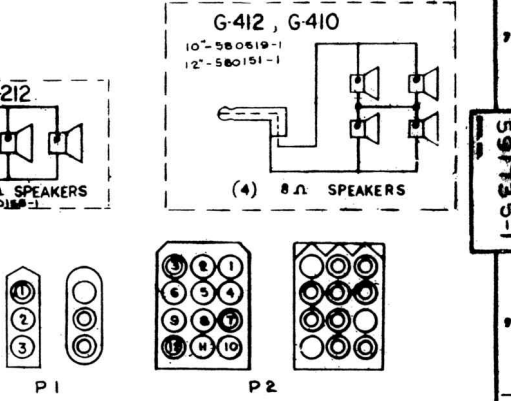
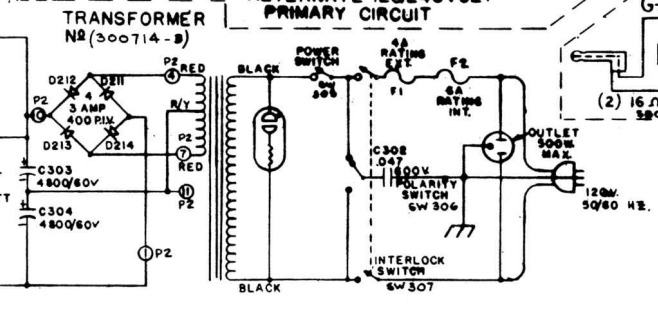
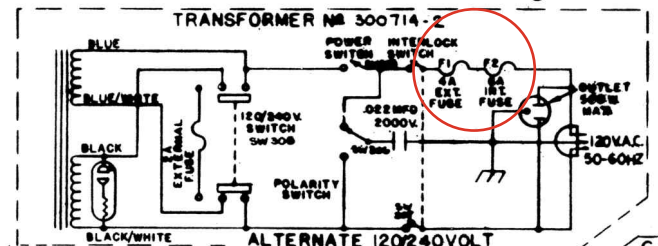


- NOTES:
- ALL RESISTORS IN OHMS 1/2 W 10% UNLESS OTHERWISE SPECIFIED.
 - ALL CAPACITORS IN MFD. AND 250 VOLT UNLESS OTHERWISE SPECIFIED.
 - SEMICONDUCTORS ARE SELECTED, FACTORY REPLACEMENTS RECOMMENDED. UNSELECTED SEMICONDUCTORS MAY EXHIBIT IMPROPER OPERATION OR SHORT LIFE.
 - CIRCUIT OF CHASSIS MAY VARY SLIGHTLY FROM THAT SHOWN HERE DUE TO NORMAL PRODUCTION CHANGES.
 - NUMBERS IN PARENTHESIS REFER TO MAGNAVOX PART NUMBERS.
 - D. C. VOLTAGE READINGS WITH NO SIGNAL APPLIED USING A 20,000 OHM PER VOLT VOLTMETER AND ARE POSITIVE WITH RESPECT TO CHASSIS GROUND UNLESS OTHERWISE SPECIFIED.
 - ADJUST R213 BIAS POT. TO READ 0.11 VOLTS D.C. WITH NO LOAD CONNECTED AND NO SIGNAL APPLIED ACROSS PINS 6 AND 9 OF OUTPUT CONNECTOR.
 - INPUT SENSITIVITY WITH CONTROLS SET FOR FLAT FREQUENCY RESPONSE, IS 11.5 MILLIVOLTS RMS IN, FOR 28.28 VOLTS NOMINAL OUTPUT WITH VOLUME AT MAXIMUM. ACCEPTABLE OUTPUT LIMITS ARE 25.4 VOLTS TO 31.1 VOLTS.
 - POWER OUTPUT SHOULD BE AT LEAST 120 WATTS RMS CONTINUOUS AT LESS THAN 0.2% T. H. D.
 - TREMLO ADJUSTMENT PROCEDURE:

1. SET TONE CONTROLS FLAT; SPEED, INTENSITY, DIMENSION & R127 CCW; OPEN TREMLO FOOT SWITCH (ON); WITH .01V/400 Hz. INTO HIGH GAIN JACK CHANNEL 2; SET OUTPUT FOR 10 VOLTS RMS.
 2. CLOSE TREMLO FOOT SWITCH; TURN INTENSITY CW; ADJUST R137 FOR 5 VOLTS RMS.
 3. SET SPEED CW; OPEN TREMLO SWITCH; REMOVE INPUT SIGNAL. SET VOLUME CONTROL CCW; ADJUST R136 FOR MINIMUM AT LOAD.
- SEMICONDUCTOR CROSS REFERENCE:
- | | | | | |
|------------------------|-------|----------|-------|-----------|
| IC 1 | | 610364H | | RAYTHEON |
| IC 2, IC 103 | | 610288-2 | | FAIRCHILD |
| IC 101 | | 610286-1 | | FAIRCHILD |
| IC 102 | | 610287-1 | | FAIRCHILD |
| IC 104 | | 610288-1 | | RCA |
| IC 105 | | 610289-1 | | RCA |
| Q101, Q208 | | 2N3584 | | FAIRCHILD |
| Q102, Q103 | | 2N3856A | | GE |
| Q201, Q202, Q203 | | 2N4249 | | FAIRCHILD |
| Q204 | | 610284-3 | | MOTOROLA |
| Q208 | | 610284-1 | | MOTOROLA |
| Q207 | | 610283-4 | | FAIRCHILD |
| Q301 | | 610283-6 | | GE |
| Q302 | | 610282-2 | | MOTOROLA |
| Q303 | | 610283-1 | | MOTOROLA |
| Q304, Q305, Q306, Q307 | | 610259-2 | | RCA |
| Q401 | | 40388 | | RCA |
| Q402 | | 40391 | | RCA |



DECIMALS	± TOL.	FRACTIONS	± TOL.
.XX	.001	UP TO 6	1/40
.XXX	.001	6 TO 24	1/20
.XXXX	.001	ABOVE 24	1/10

THREADS - CLASS 2
FIT AFTER PLATING
MACHINE FINISH
DIMENSIONS IN INCHES UNLESS OTHERWISE SPECIFIED ON DRAWING.
DO NOT SCALE DRAWING.

THE AMPRO COMPANY
1000 W. 10th St., St. Paul, Minn. 55102

MODELS
G-212, G-410, G-412

DR. J. DISANO
CHK. L. HUBER
DATE: 8/21/73
REV: 1

591735-1

RELEASED 5-8-79