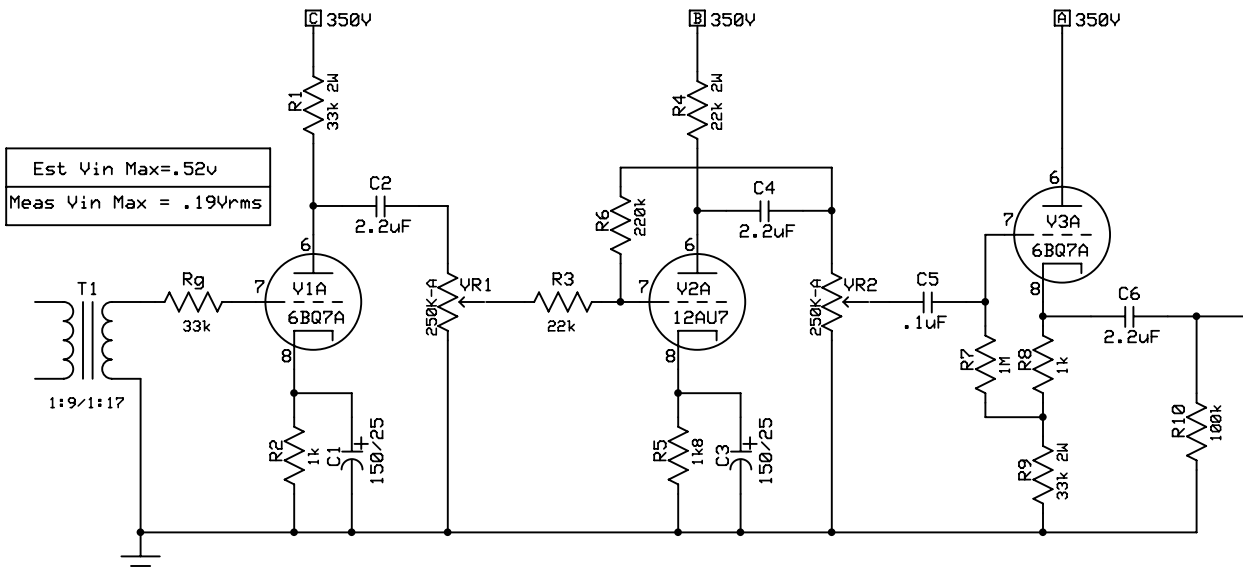


1 of 2 channels.



Est Vin Max = .52v
Meas Vin Max = .19Vrms

	V1		V2		V3	
	Calc	Meas	Calc	Meas	Calc	Meas
Va	194V	202v	226V	236V	350V	350V
Vk	4.6V	4.5V	9.5V	9.5V	153V	140V
I	4.6mA	4.5mA	5.2mA	5.2mA	4.6mA	4mA
Vrk	/	/	/	/	148V	136V
Vg	/	/	/	/	/	60V
AV	31.6	21.5	6.7	4.5	.97	.96
Vin Max	4.7V	1.71V	15.5V	14V	112V	62.6V
Vout	148V	36.8	103V	62.6V	108V	60V
B+	350V	349V	350V	349V	350V	350V

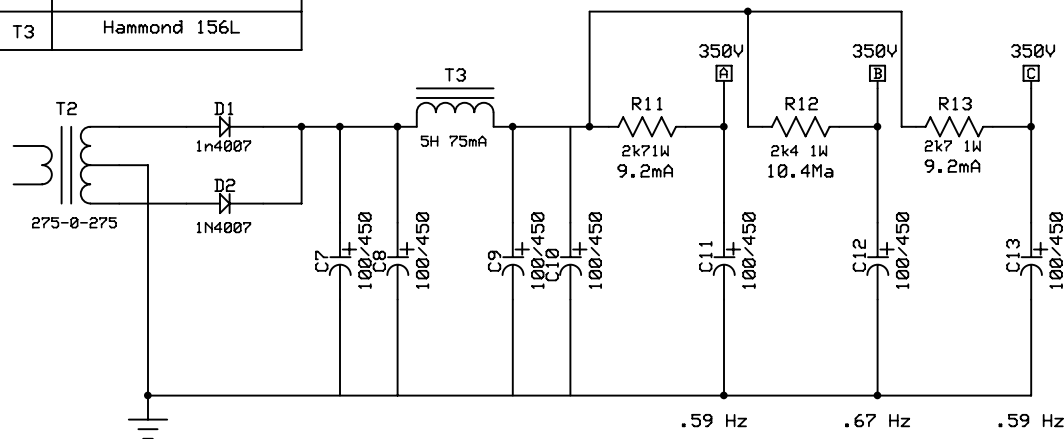
Tt1 Gain	Calc	M. 1:9	M 1:17
AV	1848	800	1500
+dB	65.3	58	63.5

Measured @ 2kHz

Estimated with nfb 150k/22k, measured 220k/22k after tweaking

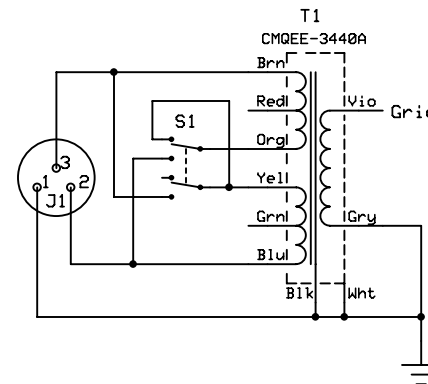
.054v	.487v	15.4v	103v	100v	Estimated max Vrms with both pots full up 1:9
.075v	.666v	14V	62.6v	60v	Measured max Vrms with both pots full up 1:9
.04v	.650v	14V	62.6v	60v	Measured max Vrms with both pots full up 1:17

T1	CineMag CMQEE-3440A
T2	Hammond 270DX
T3	Hammond 156L



Voltage, current, & frequency are as calculated.

Typical 12VDC filament supply not shown.



Overall Response

Vin	1:9	1:17
.042v		
20kHz	34v	58.3v
2kHz	32v	60v
200Hz	31.8v	59.7v
20Hz	30.75v	57.5v

S.T.A.C.

Mic Pre Three

R. Smith

Rev 1.31

9/5/2010

Page 1 of 1