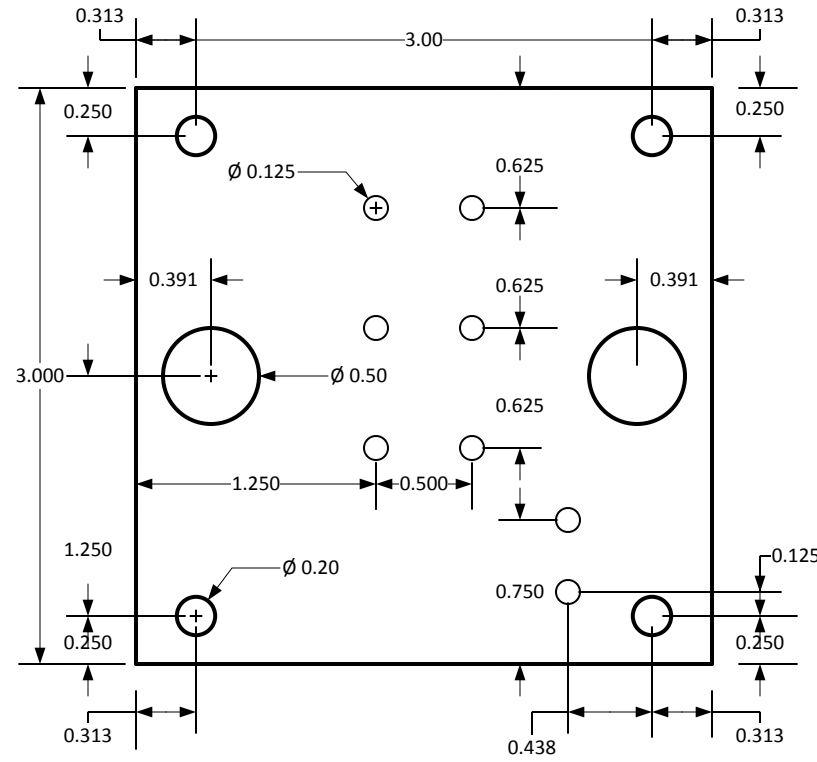
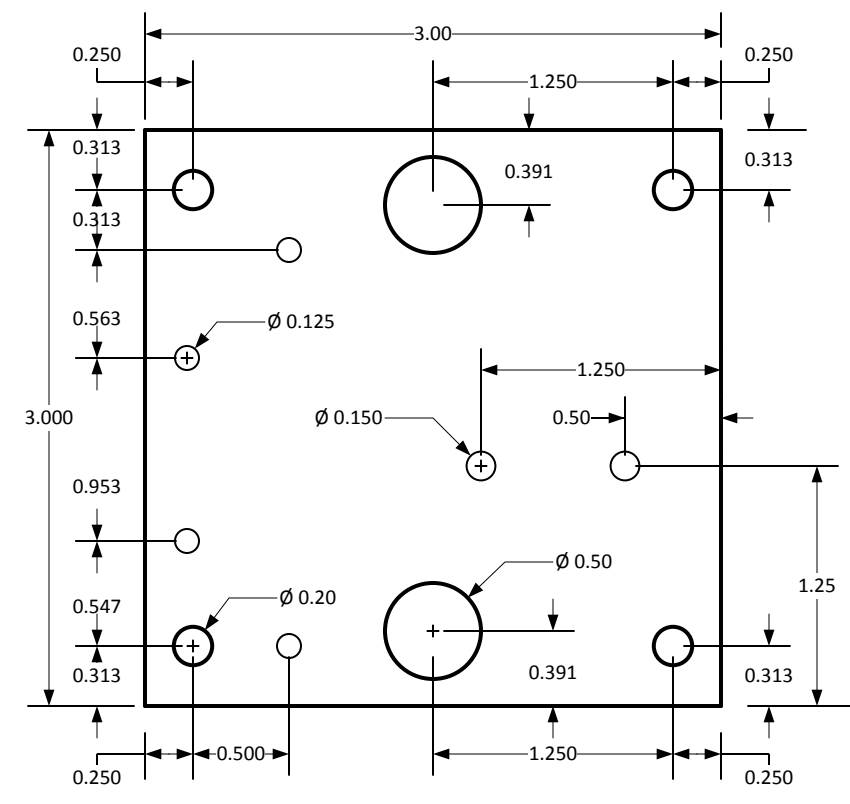
	<b>S.T.A.C.</b>		<b>Zilker</b>		<b>Chassis Assembly</b>	
	Drawn By: Pete Mitchelltree	DWG NO 20140624002	REV A	SCALE 1" = 1"	SHEET 2 OF 10	SAE
Design: Pete Mitchelltree	SIZE C	FSCM NO	SCALE	1" = 1"	SHEET	2 OF 10

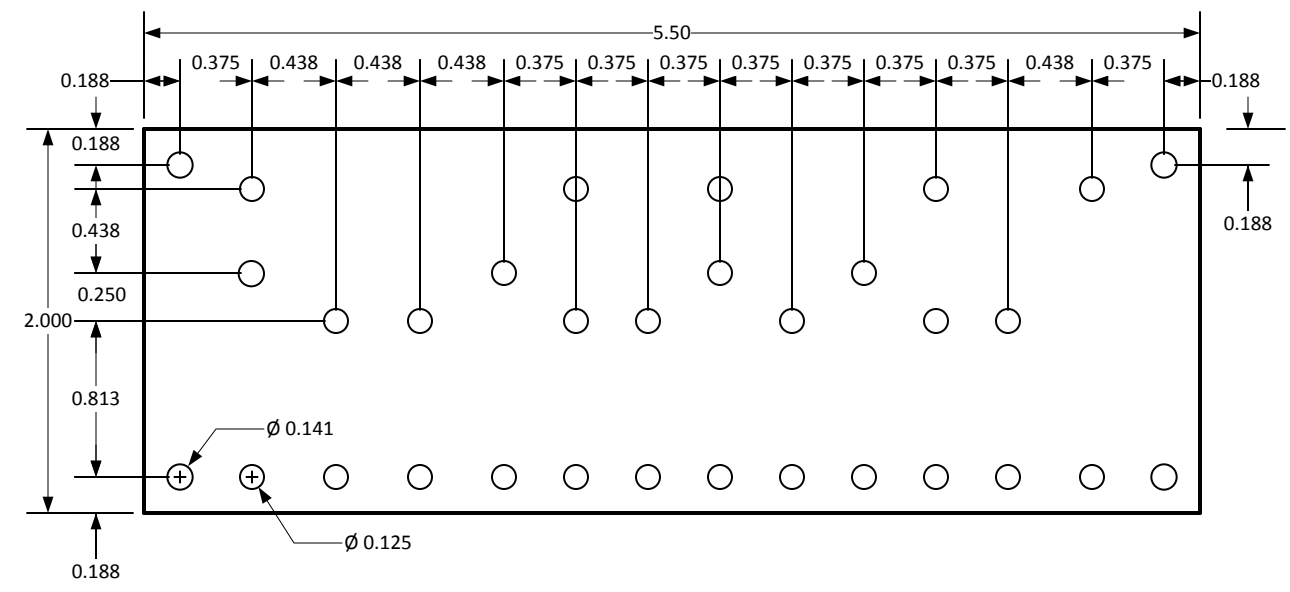




**PT Board**

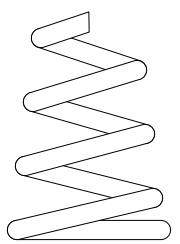


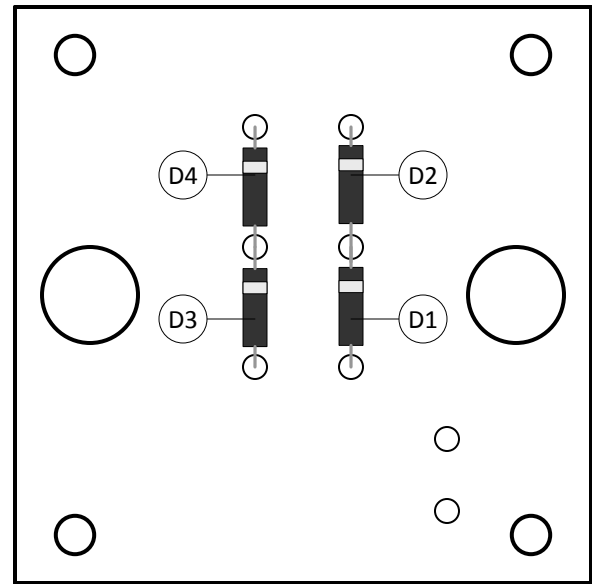
**OT Board**



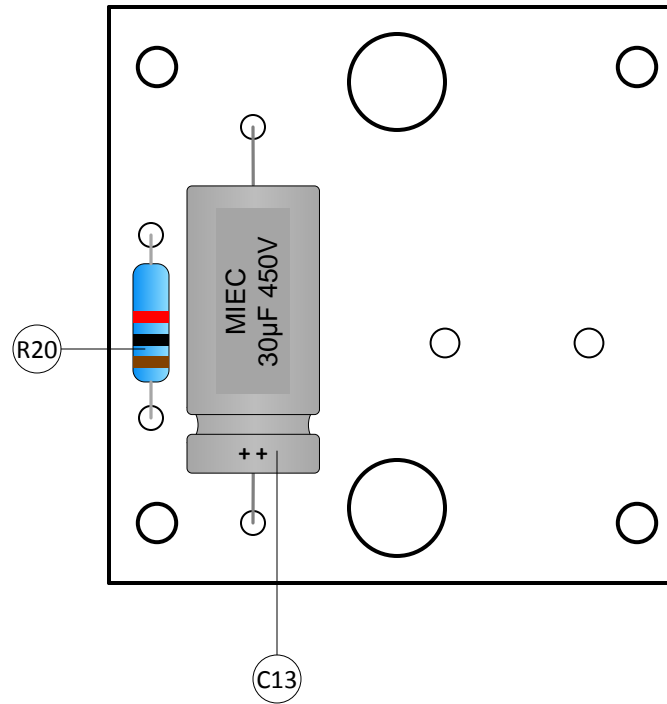
**Main Board**

Material: .125 mil Garolite (G-10)  
 Eyelets: Hoffman 1/8"HS for 1/8" Material

<b>S.T.A.C.</b>	<b>Zilker Board Fab</b>	REV	A
		DWG NO	20140624004
SIZE	B	SCALE	1" : 1"
FSCM NO	SAE		SHEET
		4 OF 10	
		Drawn by: Pete Mitcheltree Design: Pete Mitcheltree	

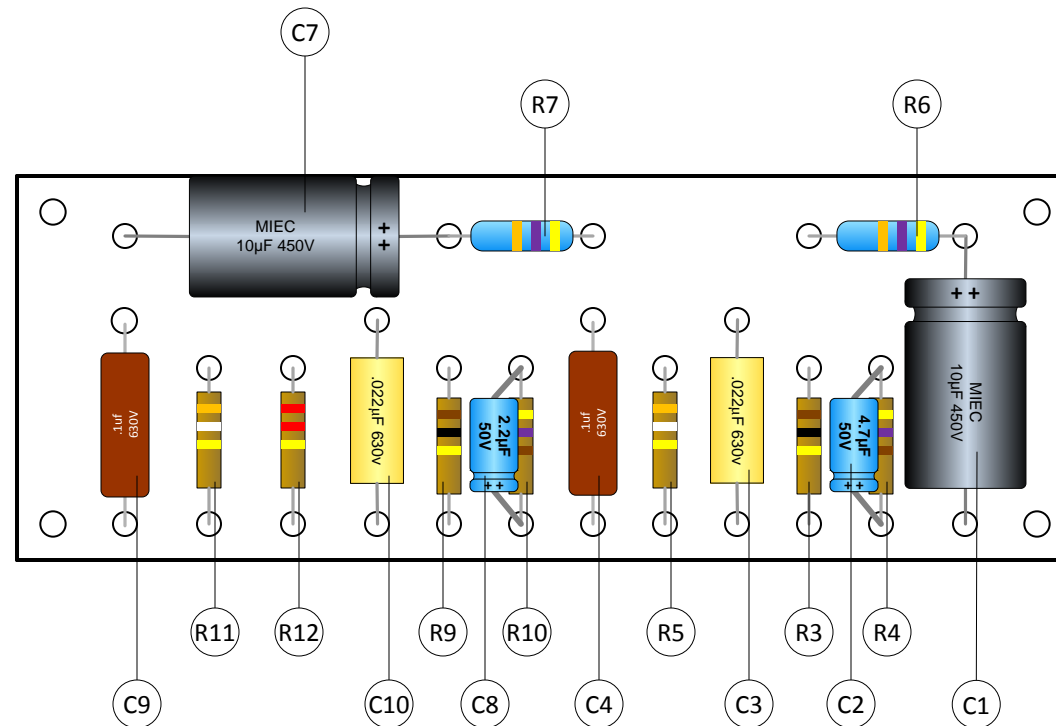


PT Board



OT Board

Parts List:	
C1,C7	- 10uF 450V axial electrolytic
C2	- 4.7uF 16V axial electrolytic
C8	- 2.2uF 16V axial electrolytic
C3,C10	- 0.022uF 600V axial Mallory150
C4,C9	- 0.1uF 600V radial Xicon MPP
C13	- 30uF 500V axial electrolytic
R3,R9	- 100K 1W axial CF
R4,R10	- 470R 1W axial CF
R6,R7	- 47K 2W axial FP MF
R5,R11	- 390K 1W axial CF
R12	- 220K 1W axial CF
R20	- 1K 2W axial FP MF
D1-D4	- uF4007 1KPIV axial glass passivated rectifier



Main Board

<b>S.T.A.C.</b>	<b>Zilker</b>	<b>Board Load</b>	
		FSCM NO 20140624005	REV C
SIZE B	SCALE 1" : 1"	SHEET 5 OF 10	DRAWN BY Pete Mitcheltree
Design: Pete Mitcheltree			

