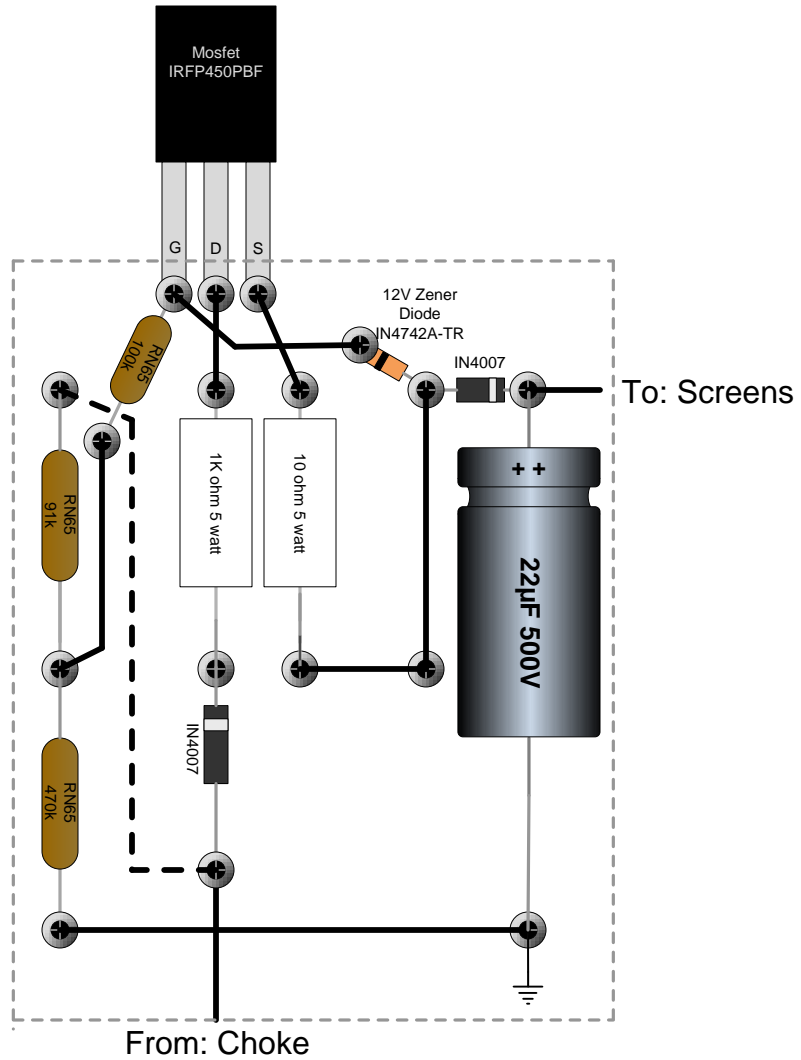


Fixed Voltage Regulator Screen Supply



Notes: Board size 3-1/8" X 4", metal film resistors should be 1 watt not RN65 as shown, mosfet must be properly mounted to chassis and connected to board at points shown. The 91K resistor may not achieve the proper voltage. Change the resistor to 56K or another value to achieve the desired voltage.