

Here are some screen shots from my amp. The Amp is a PSE 6V6.

Pages 2 & 3 are sine waves viewed at the output of the preamp.

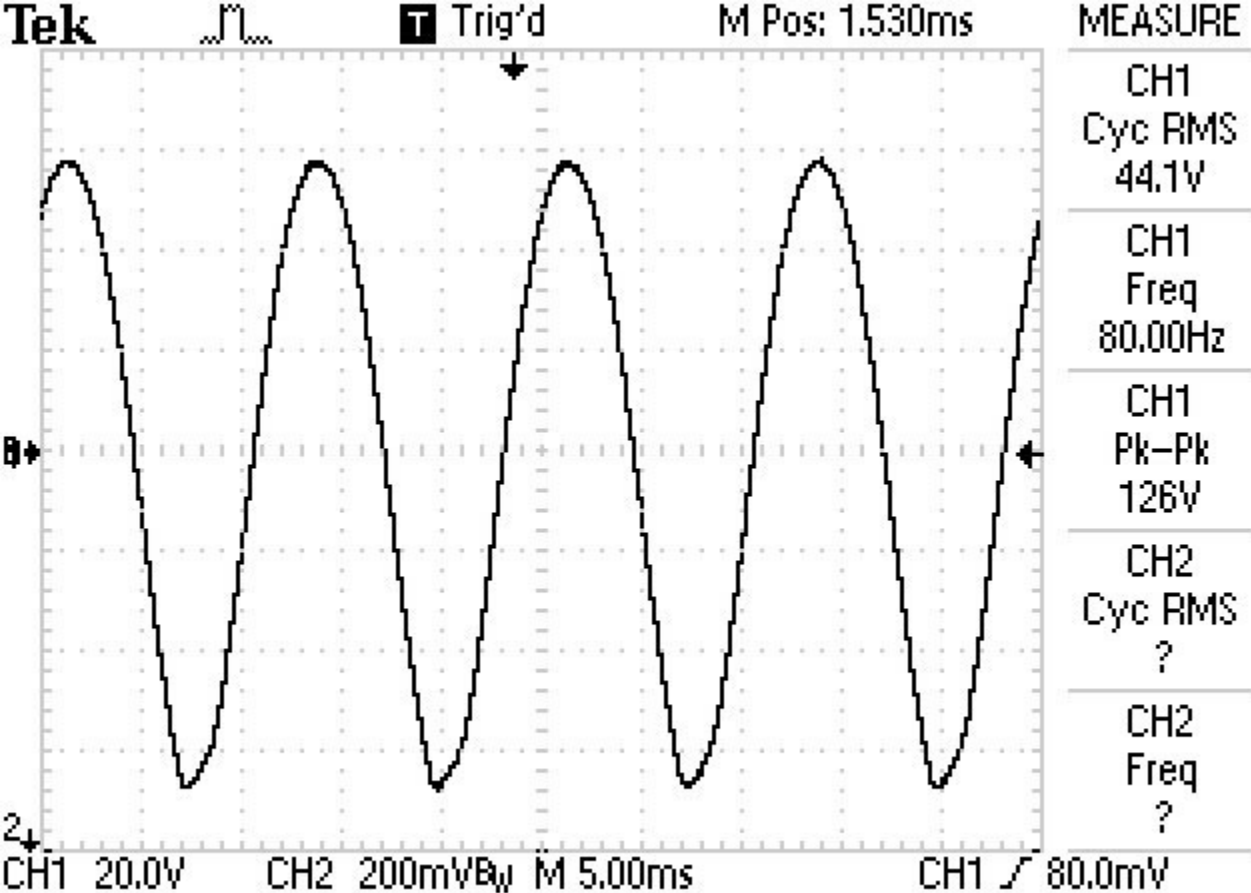
Pages 4 & 5 are the same sine waves using the FFT function.

All pages below are scoped at speaker.

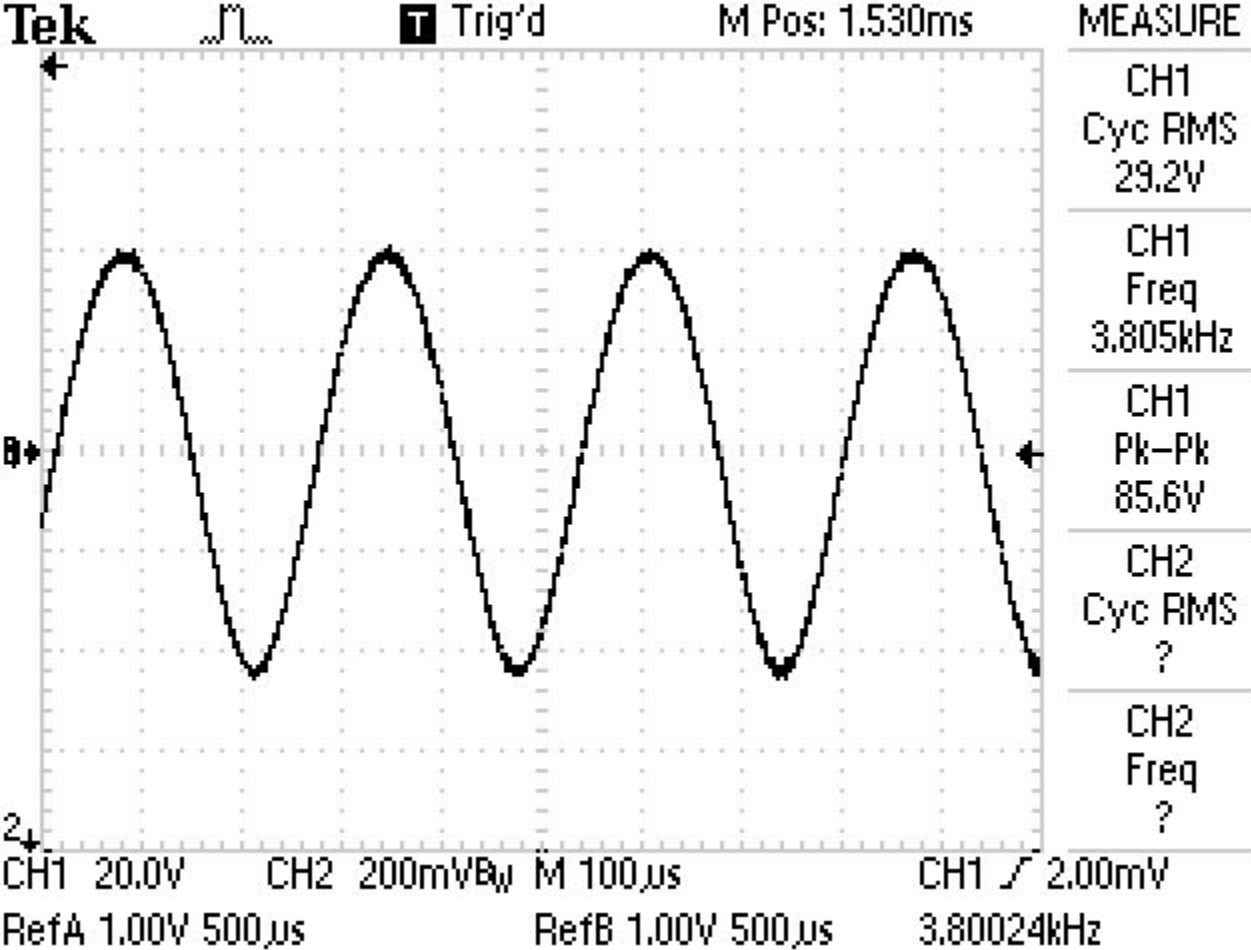
Page 6 is a sine wave pulse at 80hz, page 7 is a sine wave pulse at 3.8k.

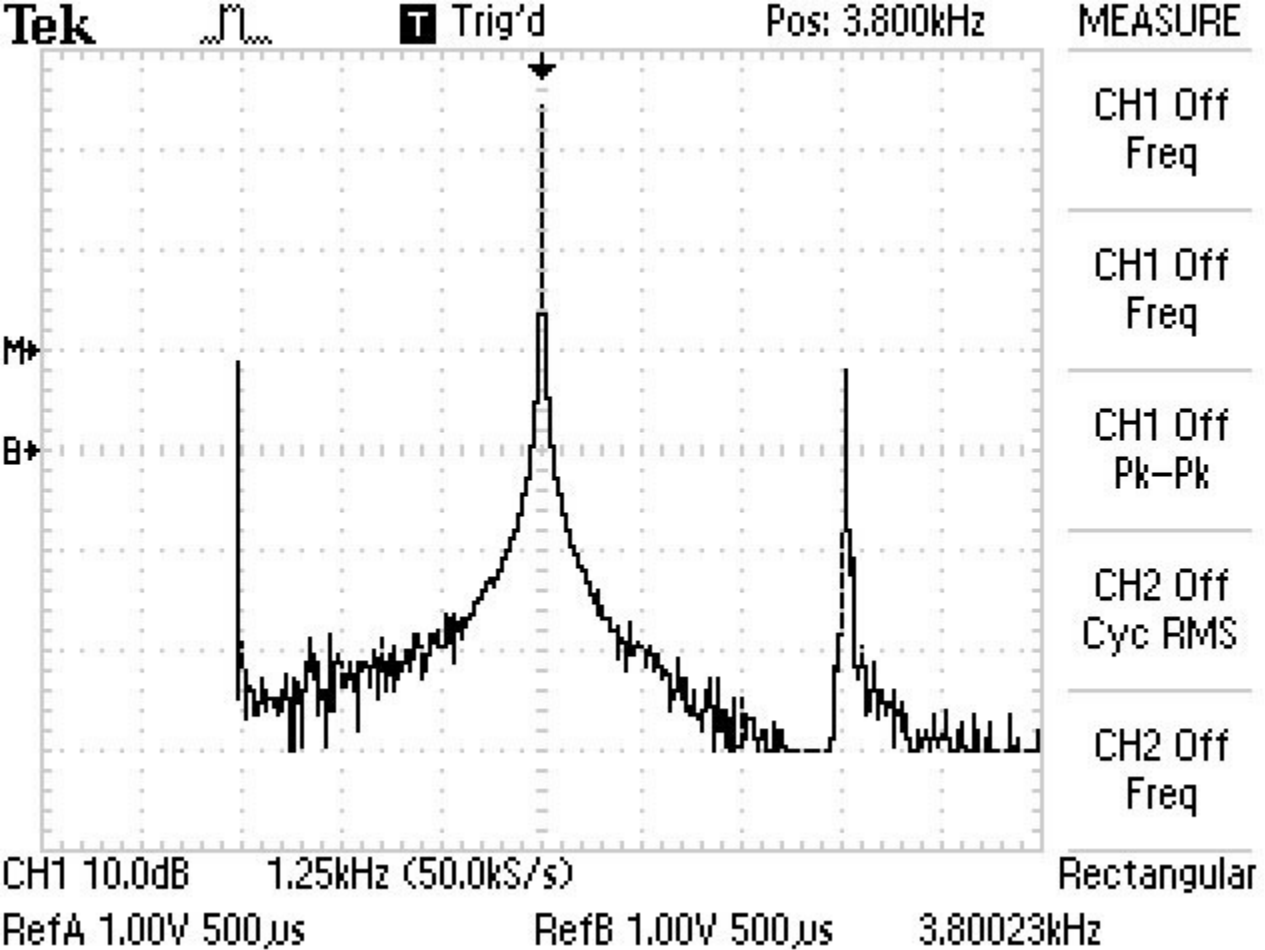
Note: I could only get triggering on the 3.8khz as shown.

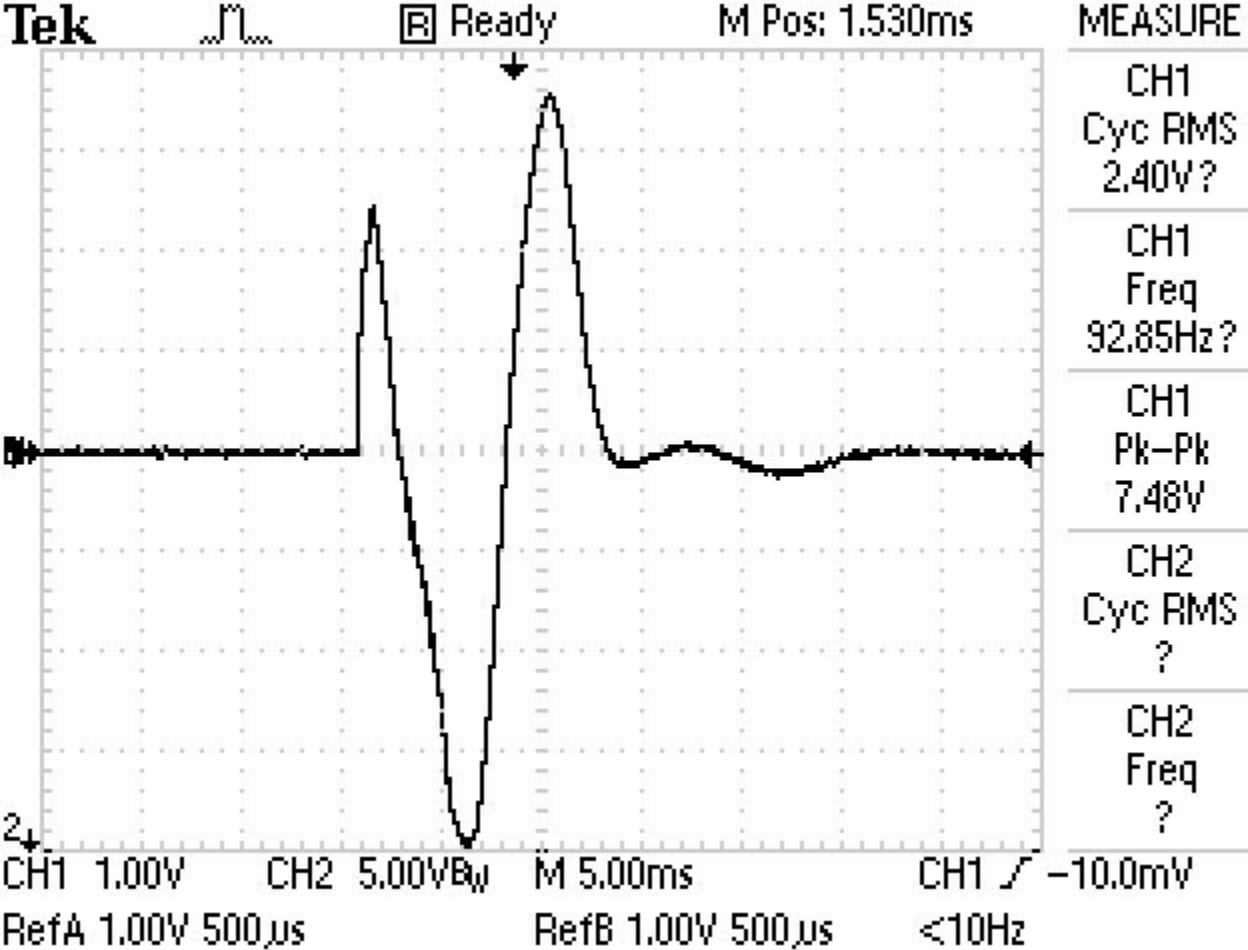
Pages 8 & 9 are sine wave pulse, viewed in FFT.

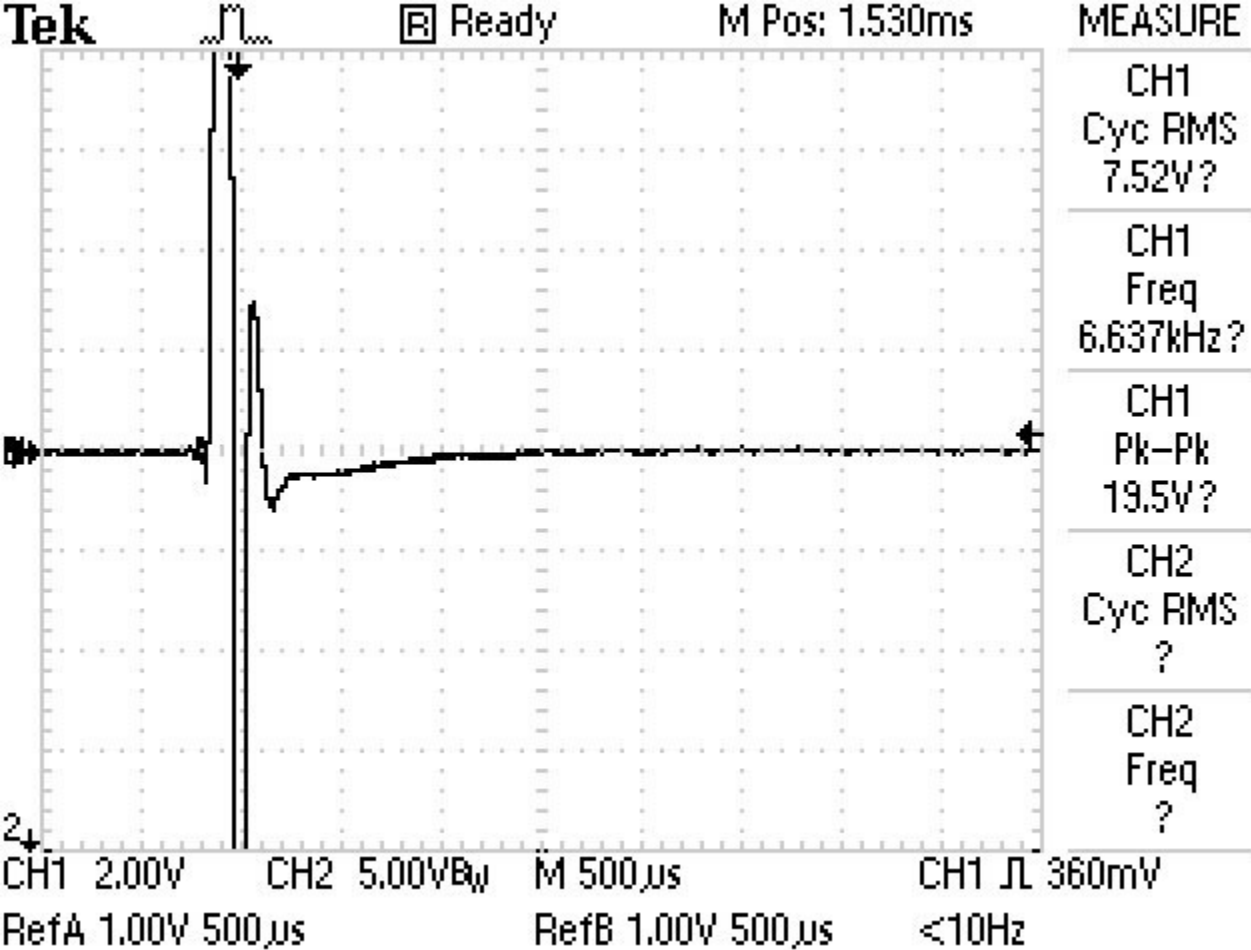


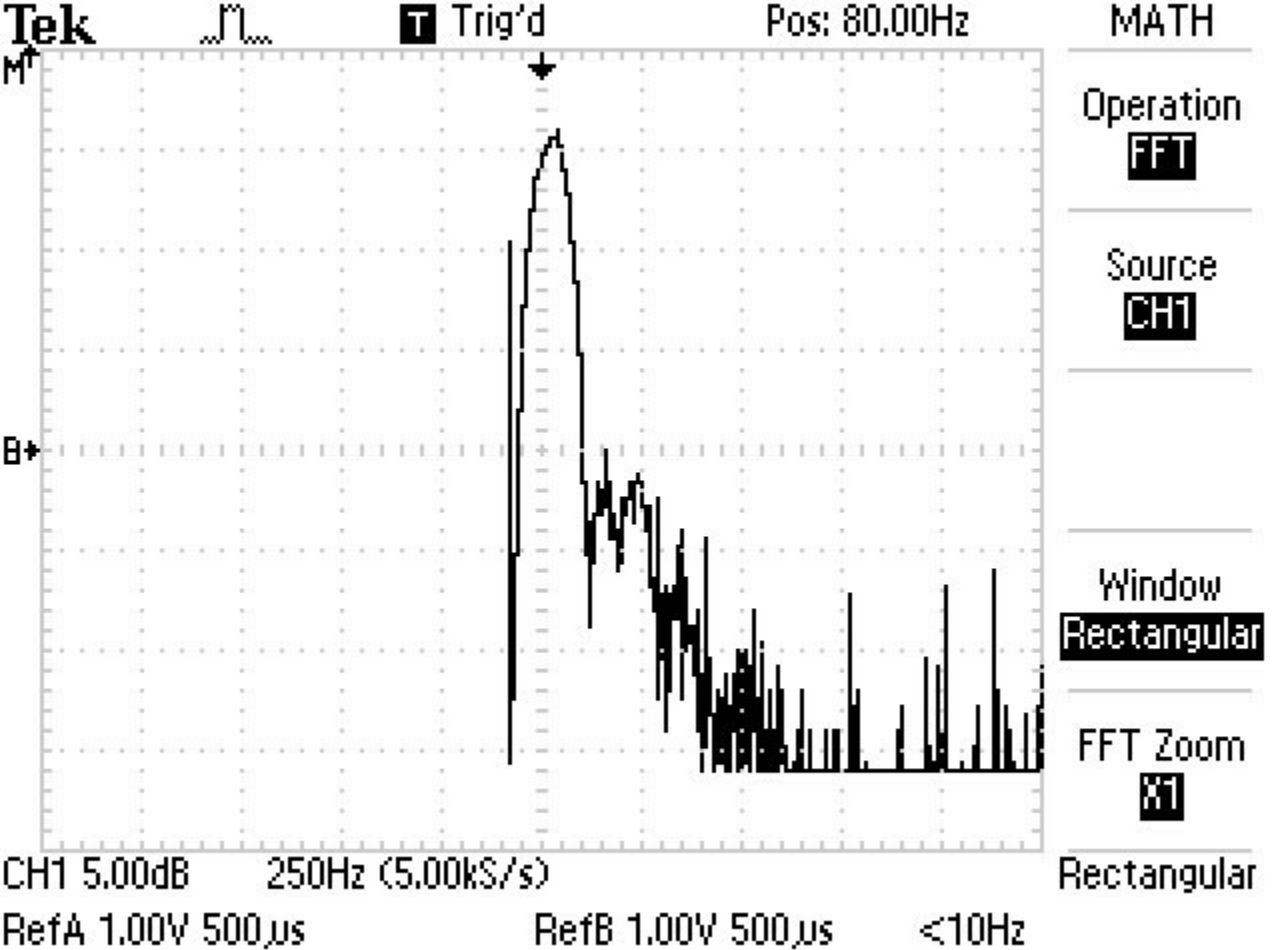
Push an option button to change its measurement











Tek



T Trig'd

Pos: 4.000kHz

MATH

Operation

FFT

Source

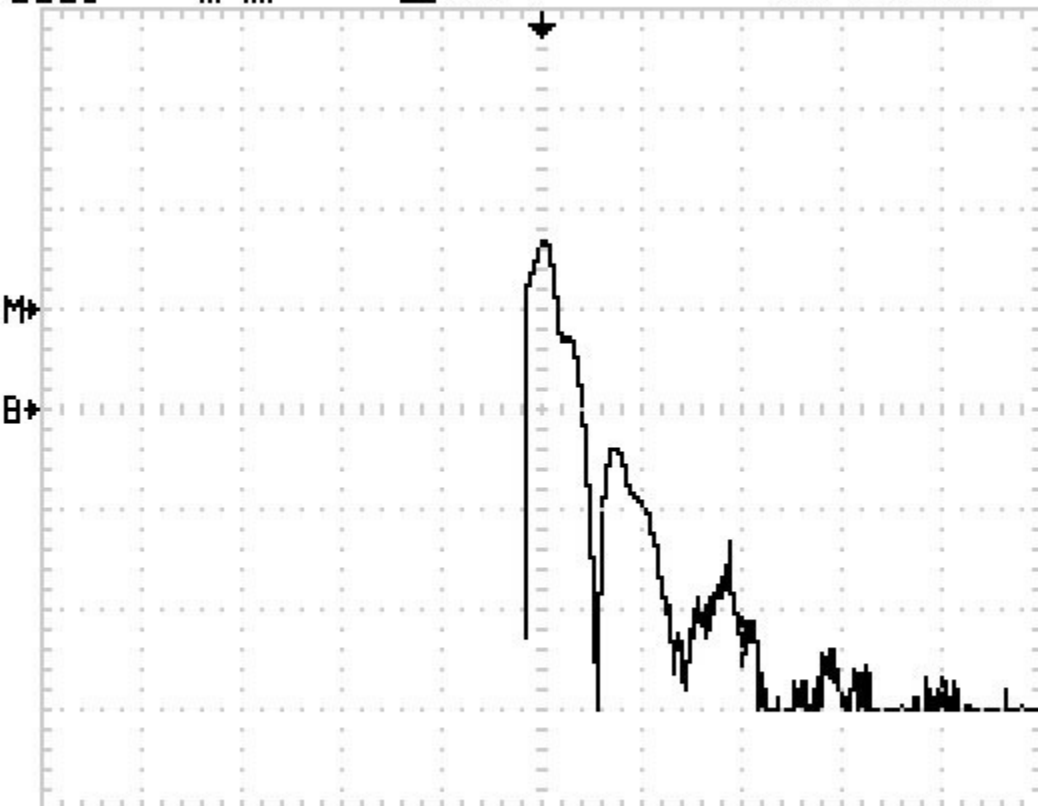
CH1

Window

Rectangular

FFT Zoom

x1



CH1 10.0dB 25.0kHz (500kS/s)

RefA 1.00V 500 μ sRefB 1.00V 500 μ s

<10Hz

Rectangular