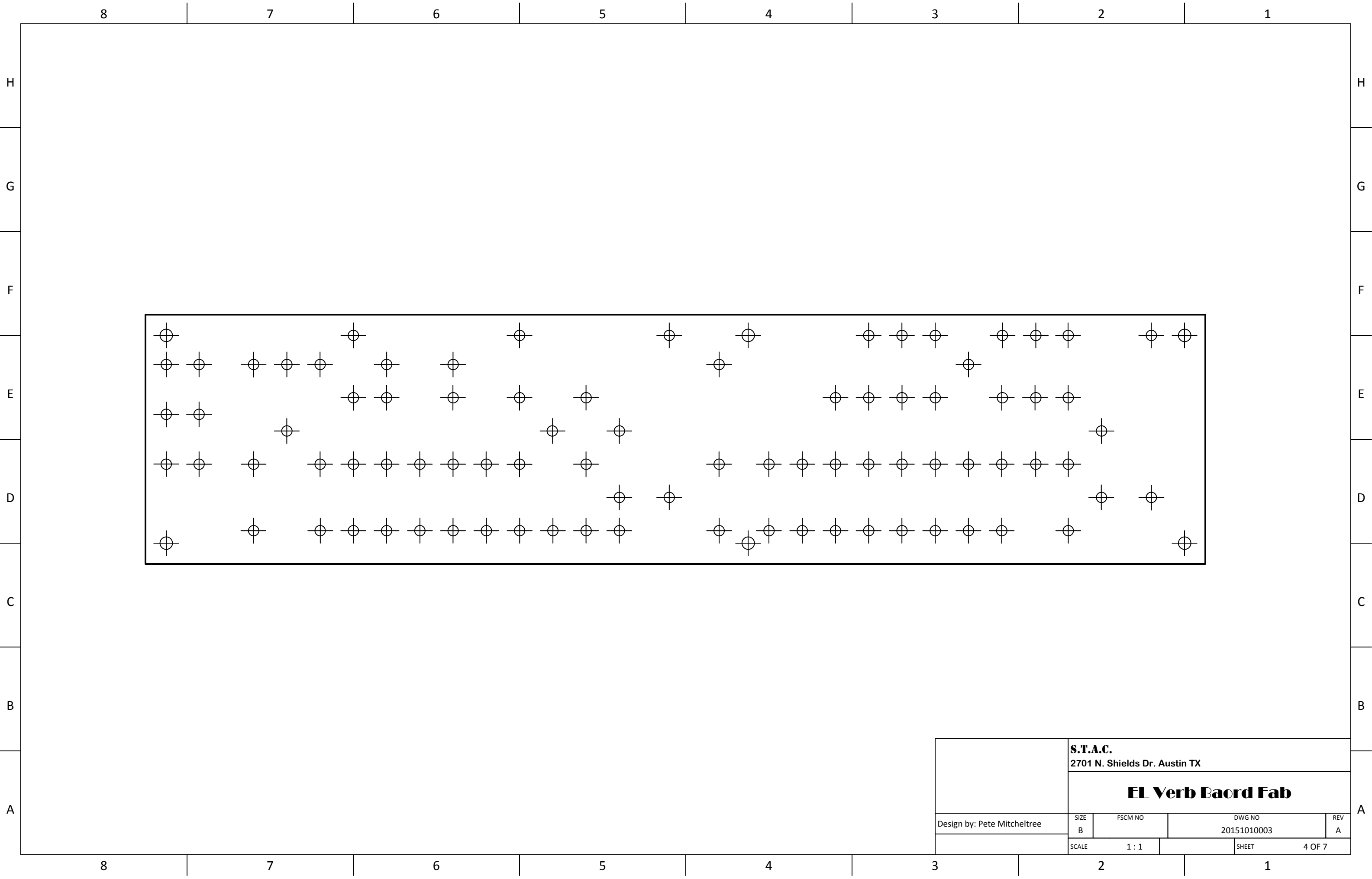


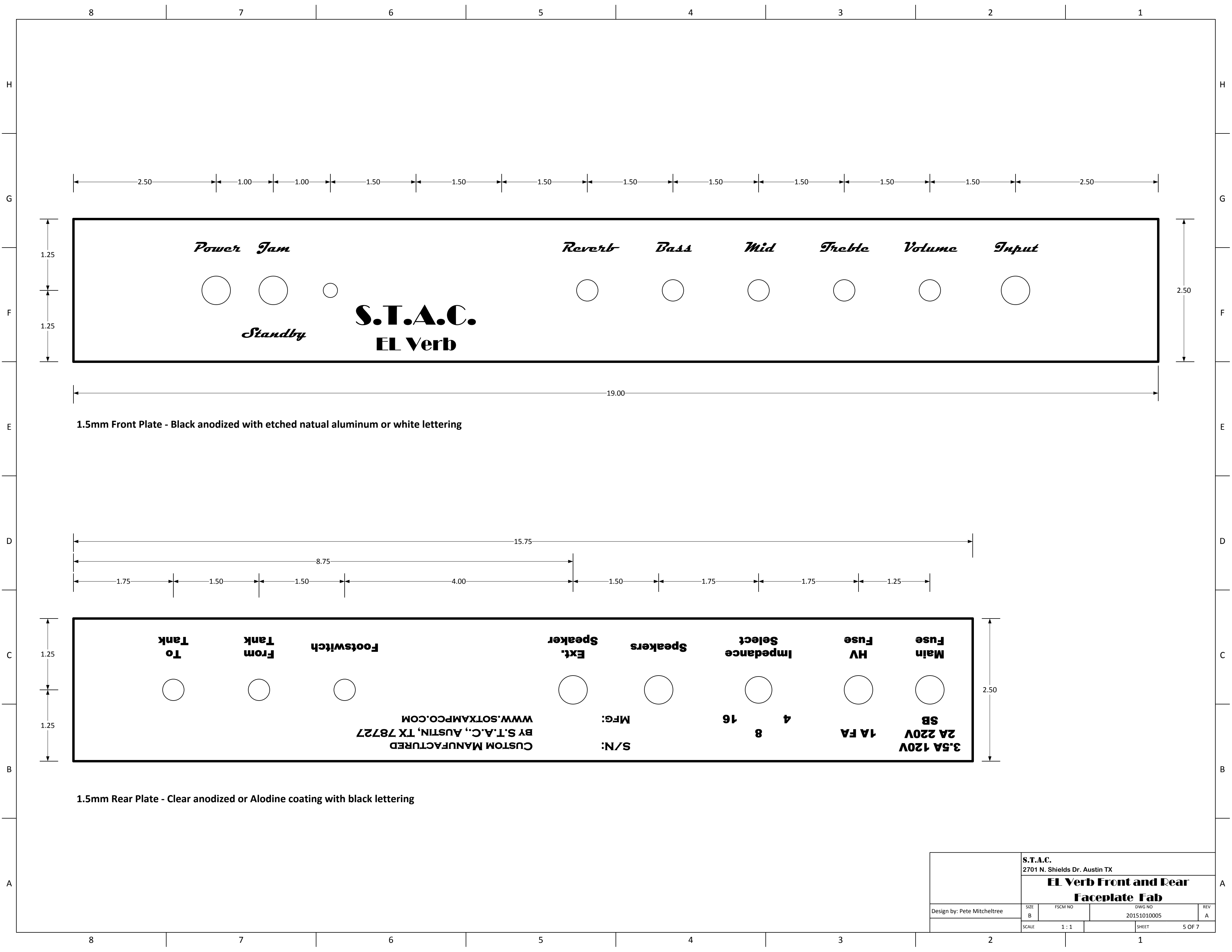
Chassis Fab. Top View

S.T.A.C. 2701 N. Shields Dr. Austin TX			
<b>El Verb Chassis Fab.</b>			
Design by: Pete Mitchelltree	SIZE B	FSM NO 20151010002	DWG NO 20151010002
	SCALE 1:1	SHEET 1	REV A
			2 OF 7





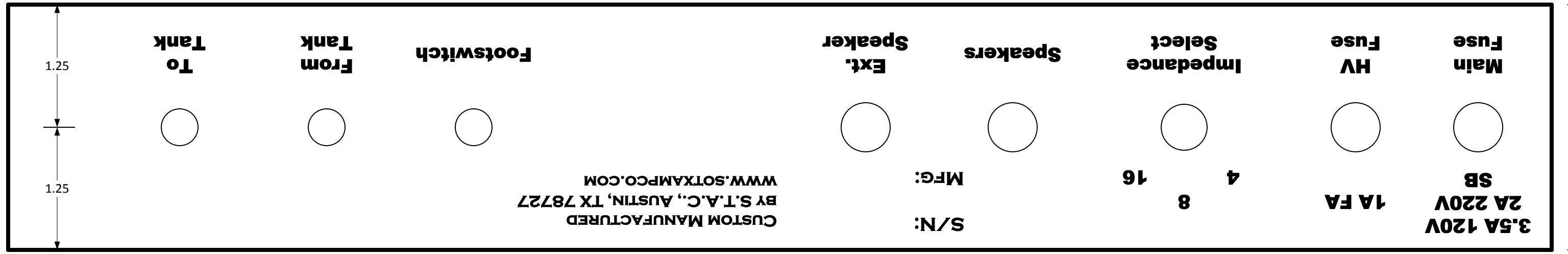
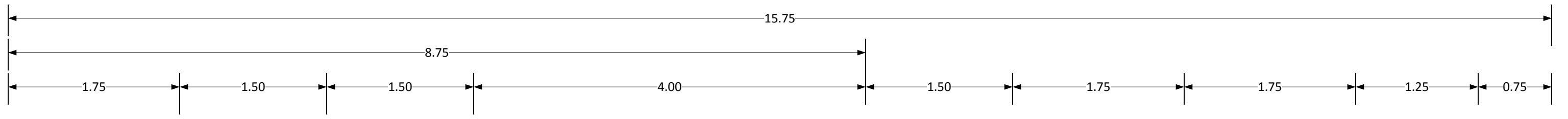
	<b>S.T.A.C.</b> 2701 N. Shields Dr. Austin TX			
	<b>EL Verb Baord Fab</b>			
Design by: Pete Mitcheltree	SIZE B	FSCM NO	DWG NO 20151010003	REV A
	SCALE 1 : 1		SHEET	4 OF 7



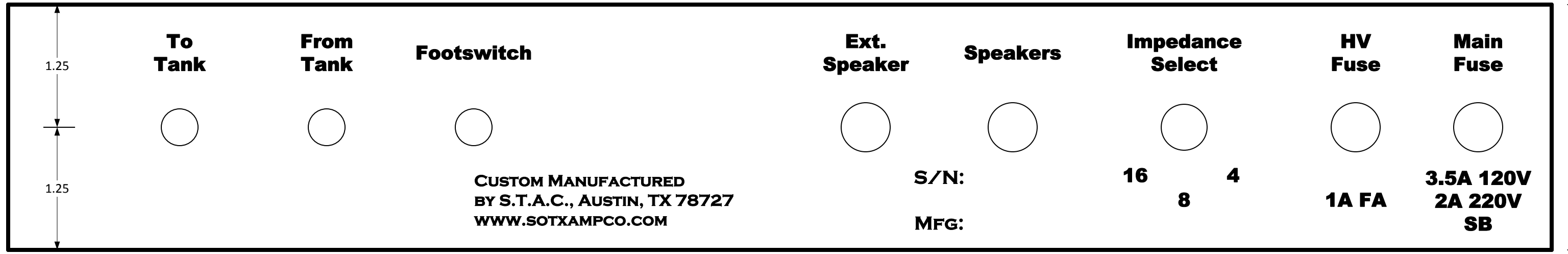
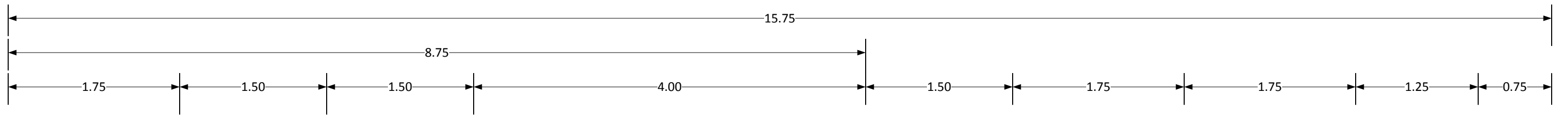
1.5mm Front Plate - Black anodized with etched natural aluminum or white lettering

1.5mm Rear Plate - Clear anodized or Alodine coating with black lettering

		<b>S.T.A.C.</b> 2701 N. Shields Dr. Austin TX		
		<b>EL Verb Front and Rear Faceplate Fab</b>		
Design by: Pete Mitcheltree	SIZE B	FSCM NO	DWG NO 20151010005	REV A
SCALE 1 : 1		SHEET 5 OF 7		



1.5mm Rear Plate - Clear anodized or Alodine coating with black lettering



1.5mm Rear Plate - Clear anodized or Alodine coating with black lettering