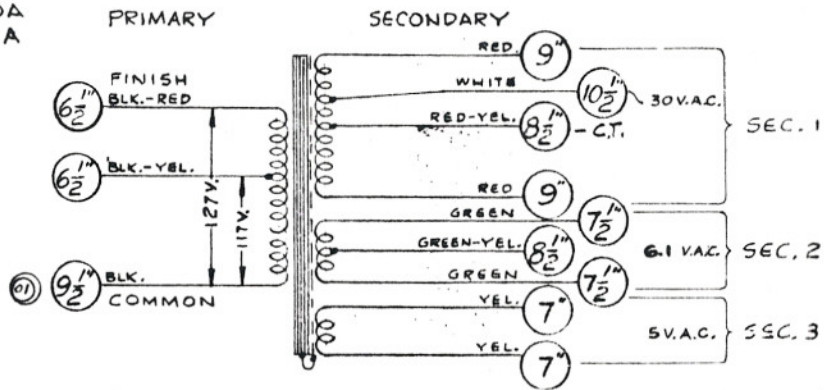


OPERADIO MFG. COMPANY
POWER TRANSFORMER SPECIFICATIONS

USED ON 1A460, 1F460
 1U460A, 1D460A
 1U550A, 1U551A

SCHEMATIC DIAGRAM

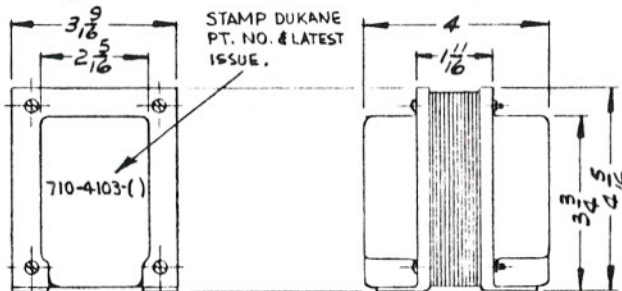
Type: MEDIUM POWER
 Description: VERTICAL MOUNT WITH SIDE COVERS
 Core Type & Mat'l: 26 GA. SUPER DYNAMO - A.A.S. AUDIO "C"
 Core Size: 3/8 Stack 1 5/8
 Interlace: 3 X 3
 Termination: WIRE LEADS - SEE SCHEMATIC
 Static Shields: BETWEEN PRIMARY AND SECONDARY - TIED TO CORE
 Impregnation: VARNISH OR MAX. WAX
 Temp. Rise: 50 °C CONTINUOUS Duty Max. Amb. Temp. 00
 Regulation: 4% Volts Cycles
 Mounting: VERTICAL WITH SIDE COVERS
 External Finish: BLACK ENAMEL



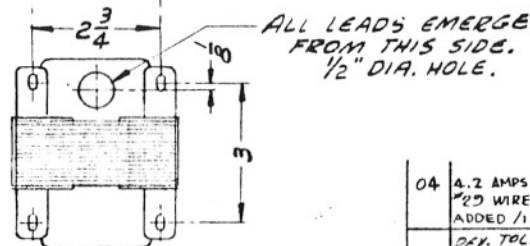
Pri. V. 127 Tapped AT - 117 Freq. 50-60 CYCLES
 Pri. No Load Current Pri. Full Load Current
 Pri. Turns 303 ± 1 3/4 No. 20 B & 8 Ga. Wire
 Tapped at 279 Turns from Start
 NOTES:

NOTE: Lead Lengths Measured From BOTTOM OF COVER - INCLUDE 3/8" LEAD LENGTHS TOLERANCE ± 1/2" TINNED ENDS. PHYSICAL SPECS

High Voltage Sec. No. ONE 1860
 720 V. AC, 100 Amp. AC 2000 Turns ± 3 1/4 No. 29 B & 8 Ga. Wire
 Tap to produce 30 V. AC FROM CENTER TAP
 Electrical Center Tap - Yes - N/A
 To Produce 400 V. DC .200 Amp. DC with 5U4G
 Rect. and 40 Mid-Henry Input Filter Load
 Sec. No. 2 6.1 Volts A.C. ± 4.2 Amps.
 16 Turns ± 0 No. 18 B & 8 Ga. Wire
 Tap at CENTER V. AC Turns from Start
 Sec. No. 3 5 Volts A.C. ± 3 Amps.
 13 Turns ± 0 No. 18 B & 8 Ga. Wire
 Tap at V. AC Turns from Start
 Sec. No. Volts A.C. ± Amps.
 Turns ± No. B & 8 Ga. Wire
 Tap at V. AC Turns from Start



NOTES:



Breakdown: Winding to core and all other windings as noted:

NOTES:
 PRIMARY: EXTERNAL LEADS NOT TO EXCEED 20 GA.
 SEC. #1: EXTERNAL LEADS NOT TO EXCEED 16 GA.
 SEC. #2: EXTERNAL LEADS NOT TO EXCEED 16 GA.
 SEC. #3: EXTERNAL LEADS NOT TO EXCEED 16 GA.

Pri. 2000 V A.C.
 Sec. 1 2000 V A.C.
 Sec. 2 1250 V A.C.
 Sec. 3 2000 V A.C.
 Sec. V

Apply 350 volts, 40 cycles for 1 1/2 min. between PRIMARY LEADS. All other windings open.

04	4.2 AMPS WAS 4 AMPS #29 WIRE WAS #28 ADDED 1/1 TO SAMPLE NO	9-7-66	ADJ
03	REV. TOL. TO ± 1/2" ADD 1/2" TO LEAD LENGTHS	3-13-56	RE
02	REVD TRANS SPECS TO DATE, SEC #2 WAS 6.0V	1-19-56	1/1
01	9" WAS 5" ADD LEAD LENGTH TOL	10/13/55	1/1
ISSUE	WAS	DATE	APPR

MID-WEST COIL & TRAN. SAMPLE #141P14/1

DUKANE
 CORPORATION
 ESTABLISHED AS "OPERADIO" 1923
 31 CHARLES, ILLINOIS

TRANSFORMER - POWER

SCALE	DATE 4-18-55
DRAWN (AKL)	APP'D JEC
CHECKED	ENGR. (AKL)
NO. 710-4103	

F-3745 Sample Approved Date

04
01
02
153R