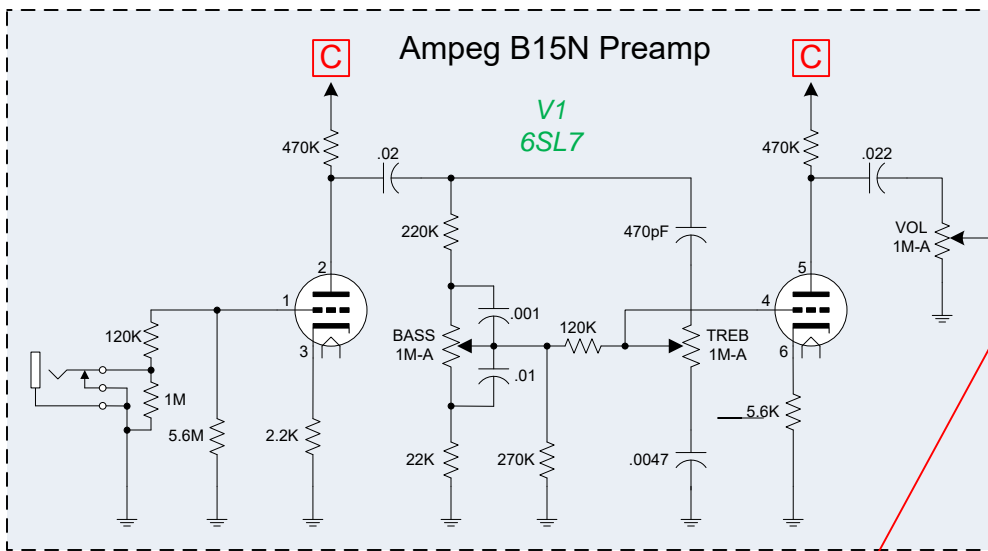


NOTE... This drawing contains layers!

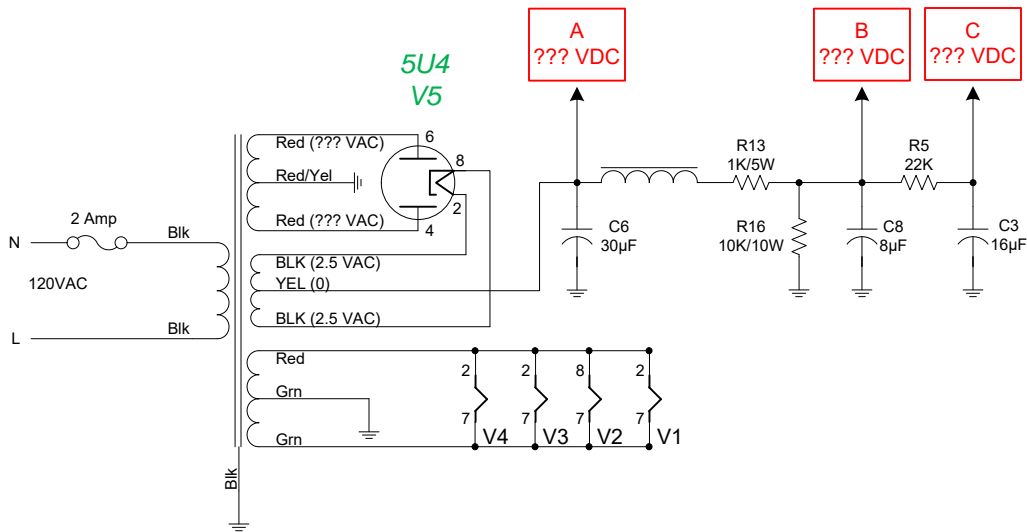
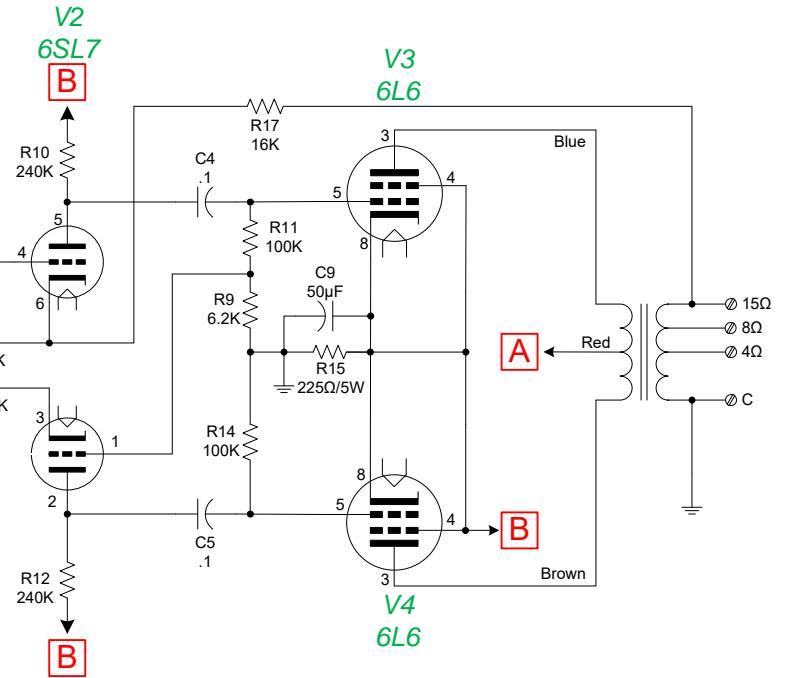
In addition to the original Webster preamp, this drawing also includes a Fender preamp and an Ampeg preamp. Each preamp is on a separate layer. To view a particular preamp select "Layers" and click on "Layer Properties". Under the Visible column select only the preamp you wish to see. Be sure to uncheck the other preamp layers. Then click "OK". Use this same procedure to print a particular preamp.

Webster Electric Model 88-24

Drawn by Steve Luckey
09-13-2018



Remove this resistor if building the Ampeg preamp

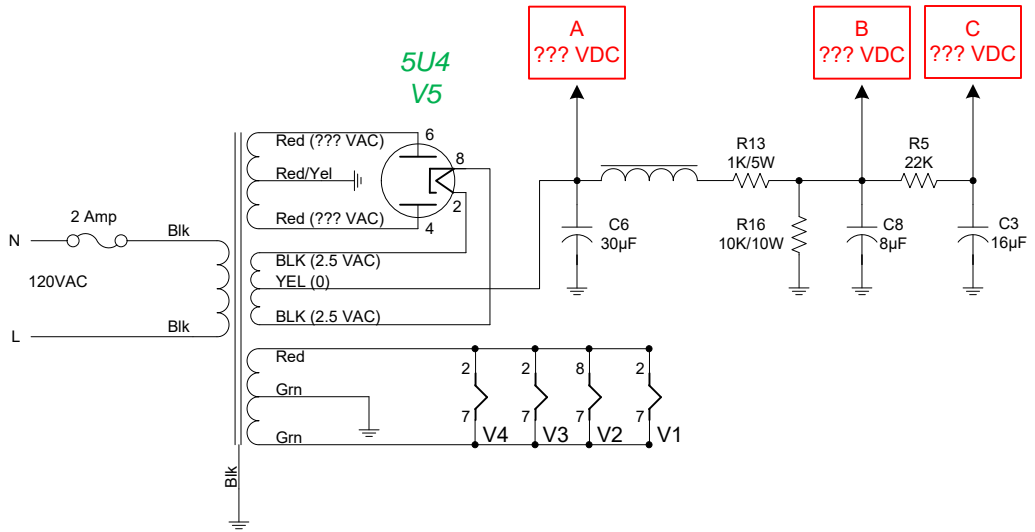
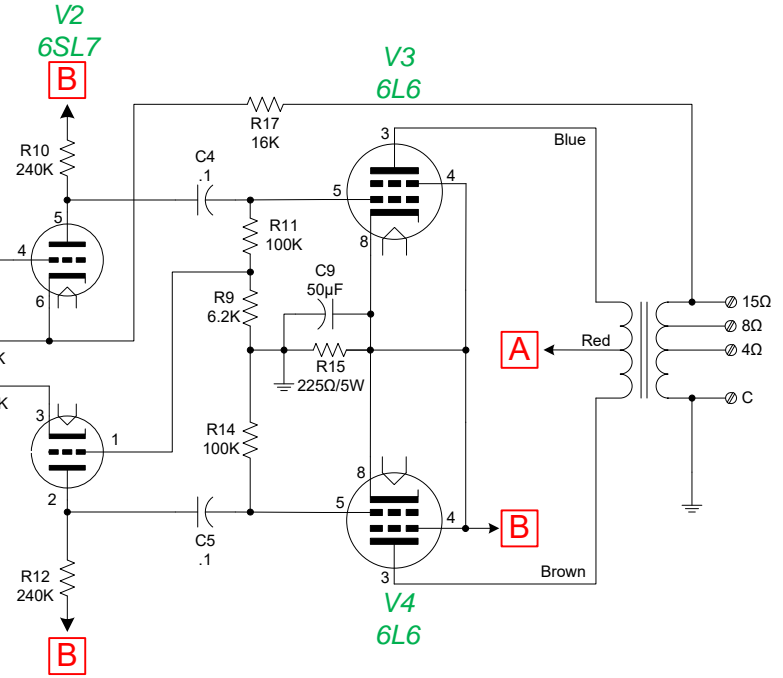
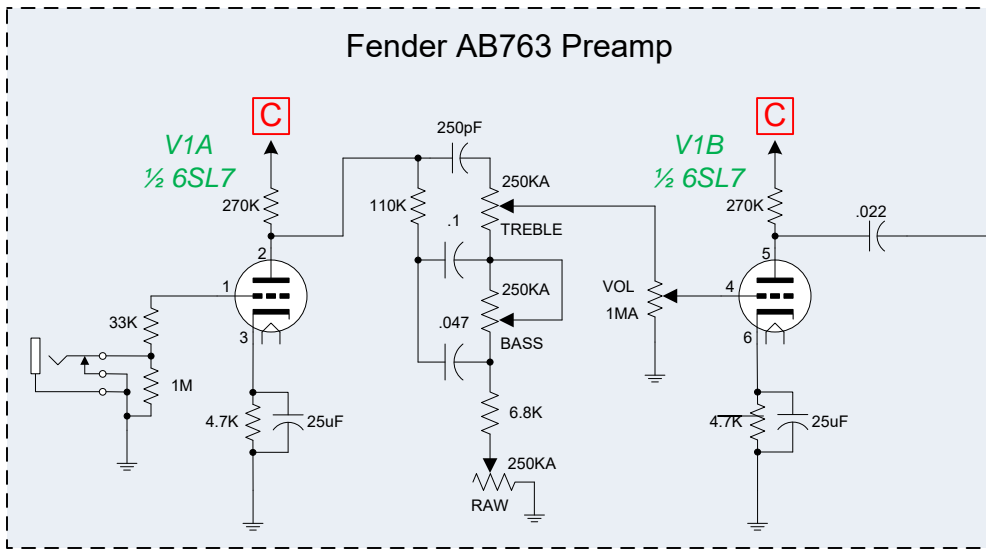


NOTE... This drawing contains layers!

In addition to the original Webster preamp, this drawing also includes a Fender preamp and an Ampeg preamp. Each preamp is on a separate layer. To view a particular preamp select "Layers" and click on "Layer Properties". Under the Visible column select only the preamp you wish to see. Be sure to uncheck the other preamp layers. Then click "OK". Use this same procedure to print a particular preamp.

Webster Electric Model 88-24

Drawn by Steve Luckey
09-13-2018



NOTE... This drawing contains layers!

In addition to the original Webster preamp, this drawing also includes a Fender preamp and an Ampeg preamp. Each preamp is on a separate layer. To view a particular preamp select "Layers" and click on "Layer Properties". Under the Visible column select only the preamp you wish to see. Be sure to uncheck the other preamp layers. Then click "OK". Use this same procedure to print a particular preamp.

Webster Electric Model 88-24

Drawn by Steve Luckey
09-13-2018