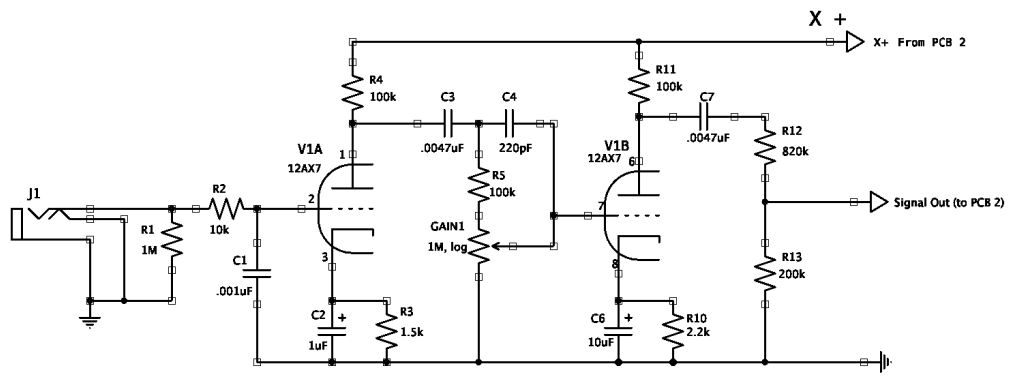


PCB 1 - Input Stage

Part Numbers refer to PCB layout design.

See — [http://valvewizard.co.uk/universal\\_pcbs\\_user\\_manual.pdf](http://valvewizard.co.uk/universal_pcbs_user_manual.pdf)

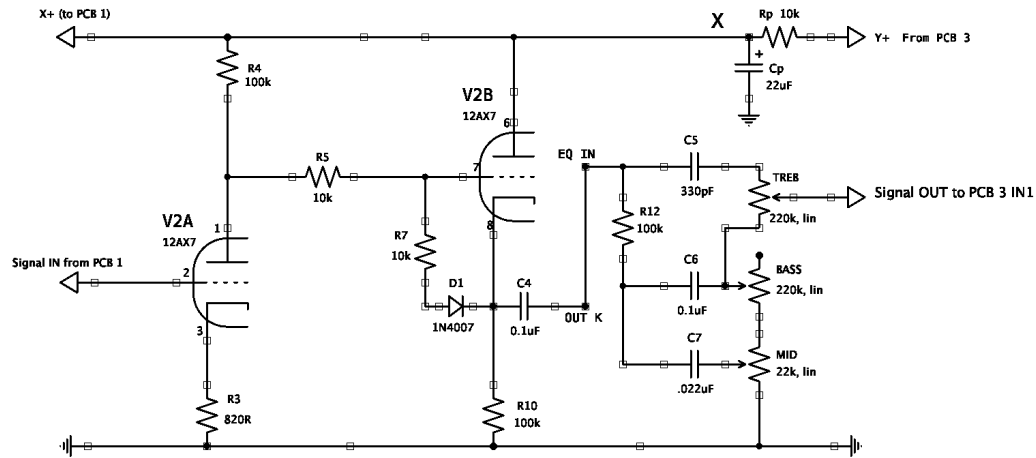


PCB 1 - Input		LongtailPairAmps
<b>VW / BJ Hybrid II</b>		
A C Held	Rev 1.1 2020-12-27	Page # 1

PCB 2 - Tone / EQ

Part Numbers refer to PCB layout design.

See — [http://valvewizard.co.uk/universal\\_pcb\\_user\\_manual.pdf](http://valvewizard.co.uk/universal_pcb_user_manual.pdf)

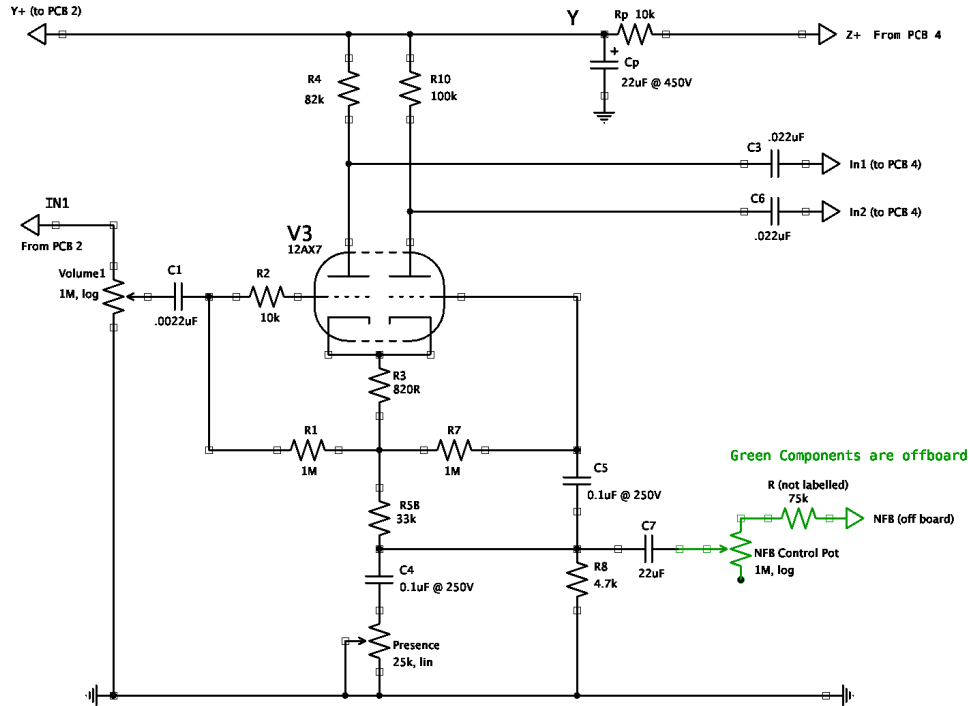


PCB 2 - Tone / EQ		LongtailPairAmps
<b>VW / BJ Hybrid II</b>		
A C HeId	Rev 1.1	Page # 2
	2020-12-27	

PCB 3 - Phase Inverter

Part Numbers refer to PCB layout design.

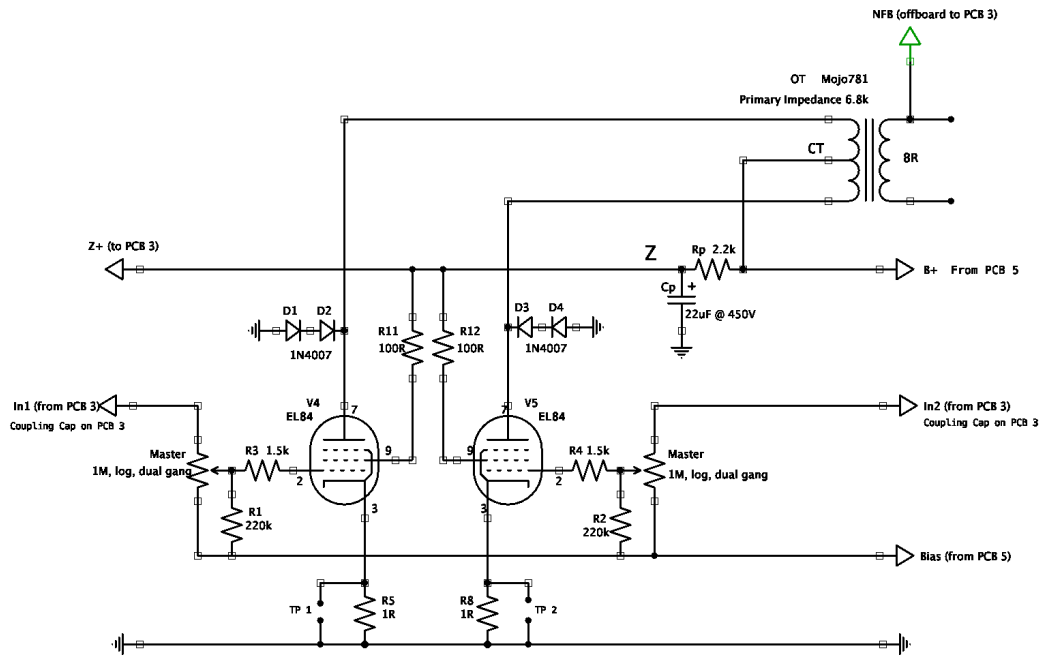
See — [http://valvewizard.co.uk/universal\\_pcb\\_s\\_user\\_manual.pdf](http://valvewizard.co.uk/universal_pcb_s_user_manual.pdf)



PCB 4 – Output Stage

Part Numbers refer to PCB layout design.

See — [http://valvewizard.co.uk/universal\\_pcb3\\_user\\_manual.pdf](http://valvewizard.co.uk/universal_pcb3_user_manual.pdf)

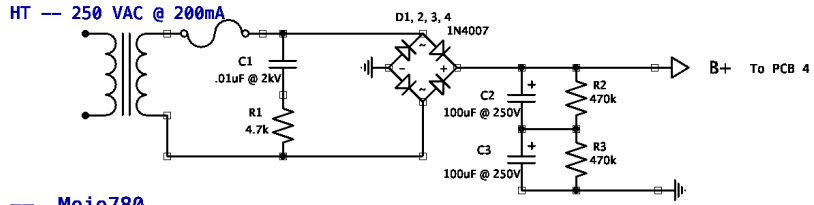


PCB 4 – Output		
<b>VW / BJ Hybrid II</b>		LongtailPairAmps
A C HeId	Rev 1.1 2020-12-27	Page # 4

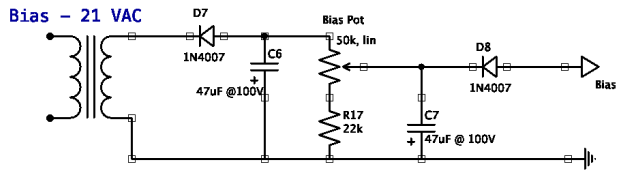
PCB 5 - Power Supply

Part Numbers refer to PCB layout design.

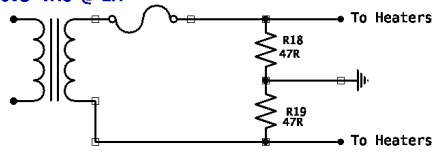
See — [http://valvewizard.co.uk/universal\\_pcb5\\_user\\_manual.pdf](http://valvewizard.co.uk/universal_pcb5_user_manual.pdf)



PT — Mojo780



Heaters — 6.3 VAC @ 2A



PCB 5 - Power Supply		
VW / BJ Hybrid II		LongtailPairAmps
A C Held	Rev 1.1	Page # 5
	2020-12-27	

