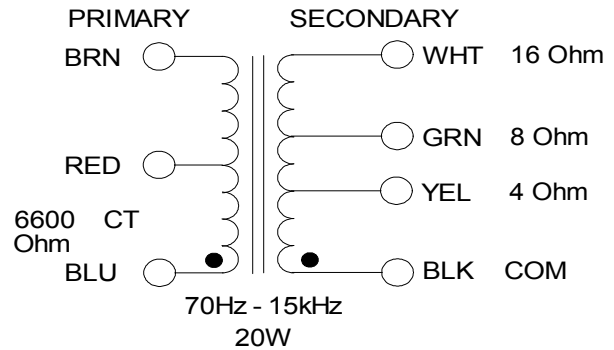


1760H

TUBE GUITAR AMPLIFIER - OUTPUT TRANSFORMER

- Designed for drop in replacement of original units.
- Constructed to look similar to original factory units (where possible).
- Material used & design specifications were kept as close as possible to the original part to preserve the stock "tone".
- Open style with minimum 9" long primary and secondary leads
- Frequency response 70Hz - 15KHz (0/-1dB reference @ 1KHz)
- Distortion is less than 1% @ 70Hz



ELECTRICAL SPECIFICATIONS

Characteristics		Typical	
Input Impedance		6600 Ohms	
Output Impedance		4, 8 & 16 Ohms	
Output Power		20W	
DCR			
Primary Brown-Blue		347.8 Ohms	
Secondary Black-Yellow		0.686 Ohm	
Secondary Black-Green		0.803 Ohm	
Secondary Black-White		1.157 Ohm	
Inductance	Impedance	@ 1.0 kHz, 1.0 V OC	
Primary Brown-Blue	25.8H	157 KOhm	
Leakage Inductance			
Primary Brown-Blue		@ 1.0 kHz, 1.0 V SC	
		12.30 mH	
Dielectric Strength		1500VRMS	
Temperature Range		-40 to 105 degC	

TEST CONDITIONS

Measurement instruments:

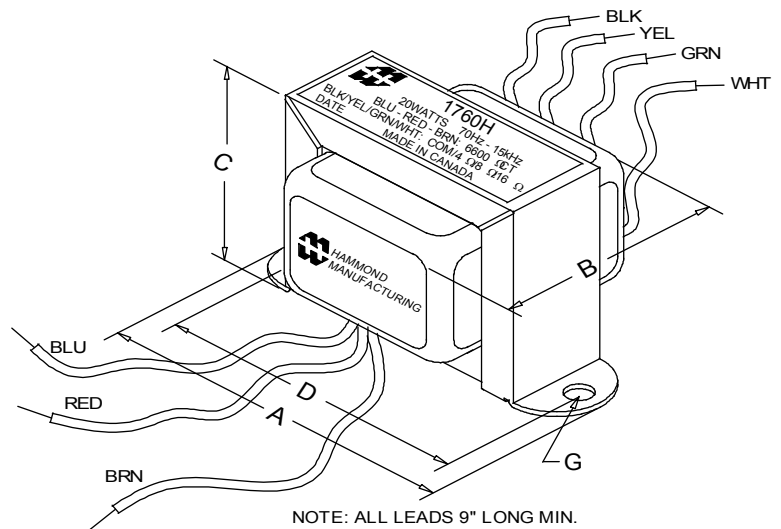
 D scope series iii audio analyzer
 Wayne Kerr 3255B with a 3265B

Keithley 2010 DVM

Hp4192a impedance analyzer

* All graphs input level 27dBu @1.0KHz reference.

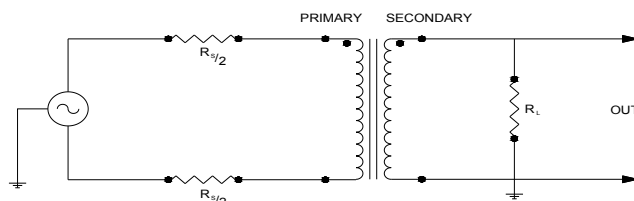
**The results are typical and are subject to normal manufacturing and electrical tolerances.



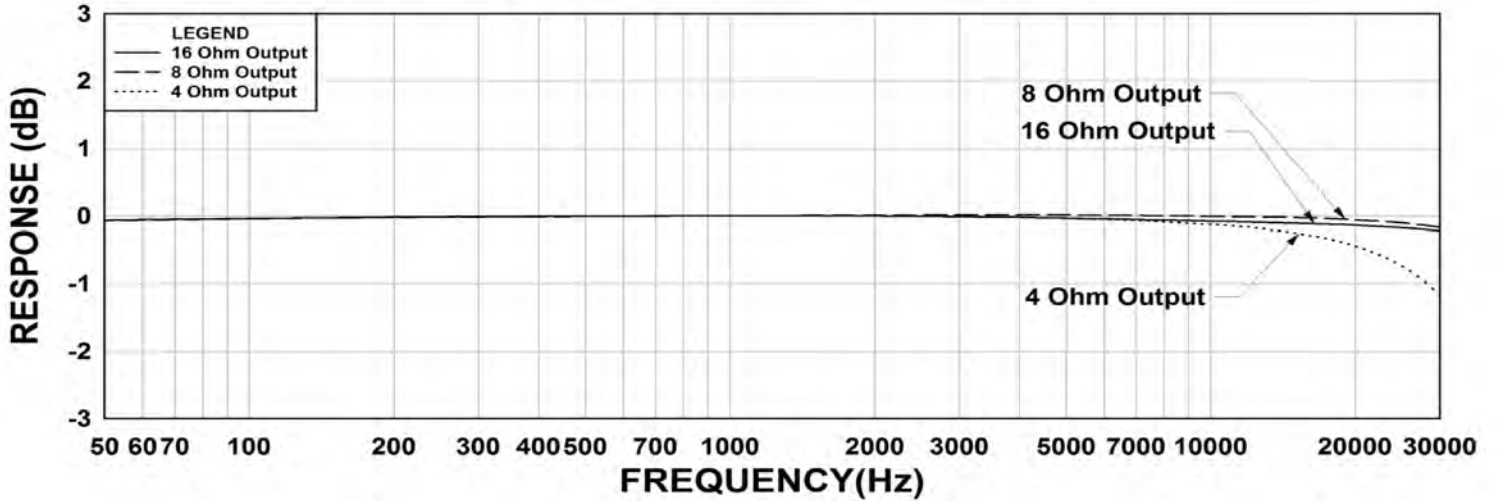
Dimensions

A	3.688" ±0.063	D	3.125" ±0.063
B	2.400" ±0.125	G	0.187" ±0.015
C	2.308" ±0.063		

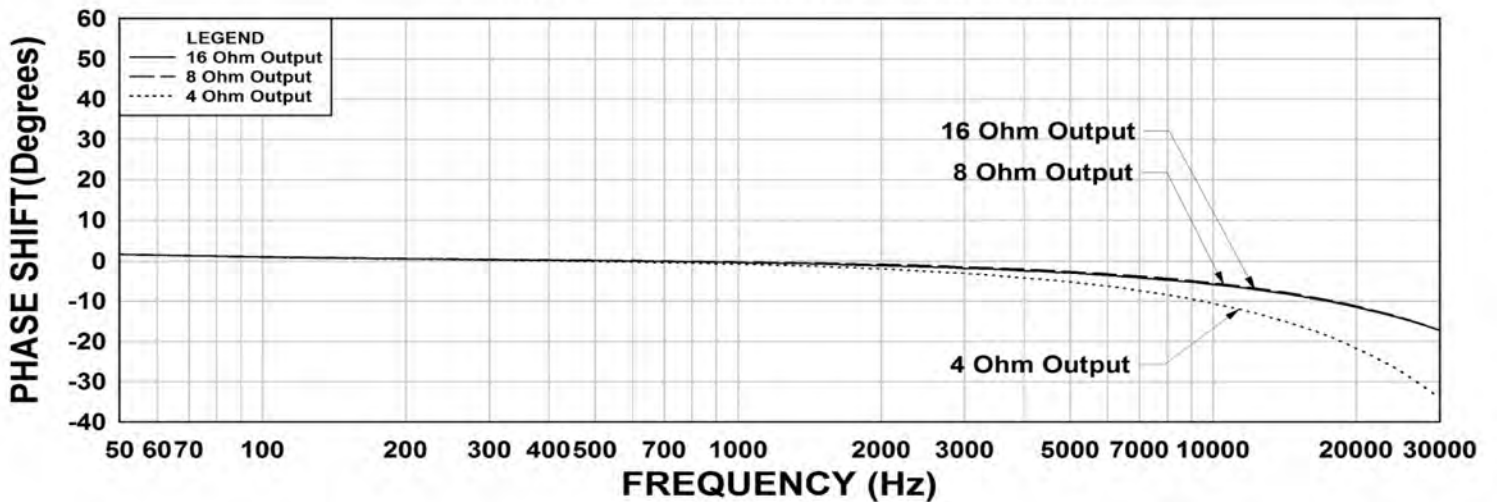
TYPICAL TEST CIRCUIT



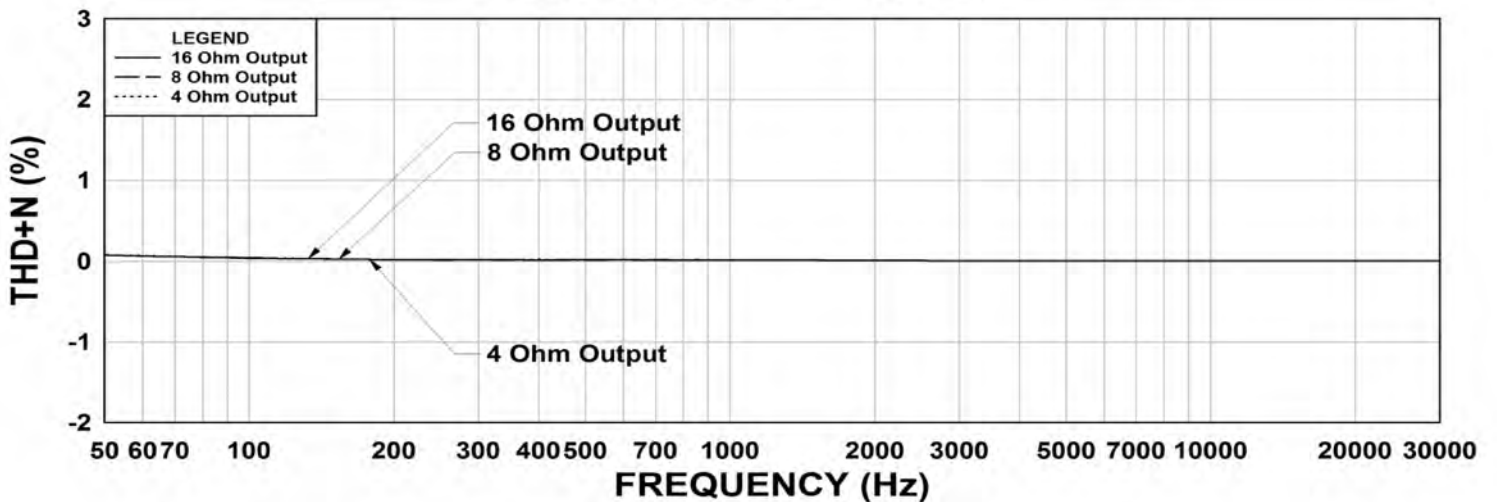
1760H Frequency Response RS = 6600 Ohms



1760H Phase Shift RS = 6600 Ohms



1760H THD+N RS = 6600 Ohms



This drawing and the information in it is the property of Hammond Manufacturing. It may not be reproduced, transmitted or used in any manner whatsoever without the written permission of Hammond Manufacturing. Data subject to change without notice.