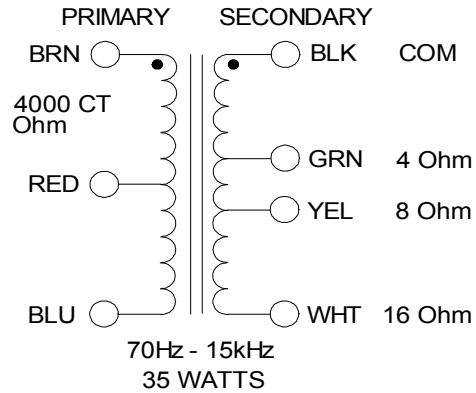


# 1760J

## TUBE GUITAR AMPLIFIER - OUTPUT TRANSFORMER

- Designed for drop in replacement of original units.
- Constructed to look similar to original factory units (where possible).
- Material used & design specifications were kept as close as possible to the original part to preserve the stock "tone".
- Open style with minimum 9" long primary and secondary leads
- Frequency response 70Hz - 15KHz (0/-1.5dB reference @ 1KHz)
- Distortion is less than 1% @ 70Hz



ELECTRICAL SPECIFICATIONS	
Characteristics	Typical
Input Impedance	4000 Ohms
Output Impedance	4, 8 & 16 Ohms
Output Power	35W

DCR	
Primary Brown-Blue	185.0 Ohms
Secondary Black-Green	0.356 Ohm
Secondary Black-Yellow	0.502 Ohm
Secondary Black-White	0.910 Ohm

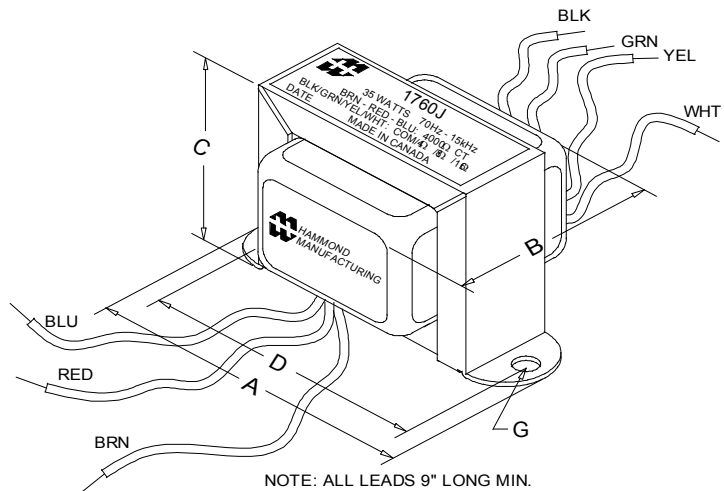
Inductance	Impedance	@ 1.0 kHz, 1.0 V OC	
Primary Brown-Blue	19.5H	124K	Ohm

Leakage Inductance		@ 1.0 kHz, 1.0 V SC
Brown-Blue		35.93mH

Dielectric Strength	1500VRMS
Temperature Range	-40 to 105 degC



Dimensions	
A	4.000" ±0.063
B	2.80" REF
C	2.63" MAX
D	3.560" ±0.063
G	0.187" ±0.015

### TEST CONDITIONS

Measurement instruments:

D scope series iii audio analyzer

Wayne Kerr 3255B with a 3265B

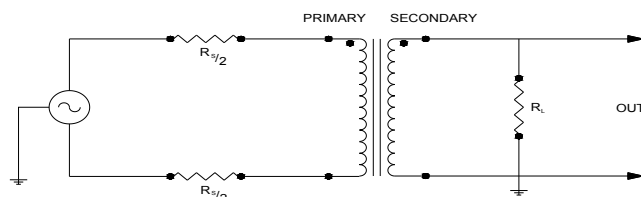
Keithley 2010 DVM

Hp4192a impedance analyzer

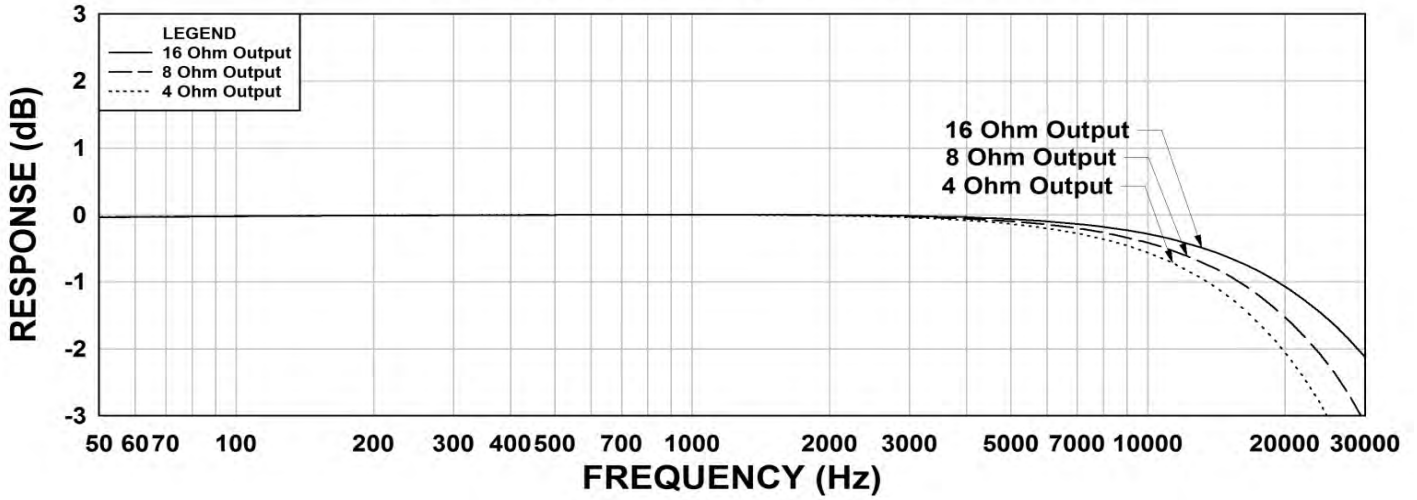
\* All graphs input level 27dBu @1.0KHz reference.

\*\*The results are typical and are subject to normal manufacturing and electrical tolerances.

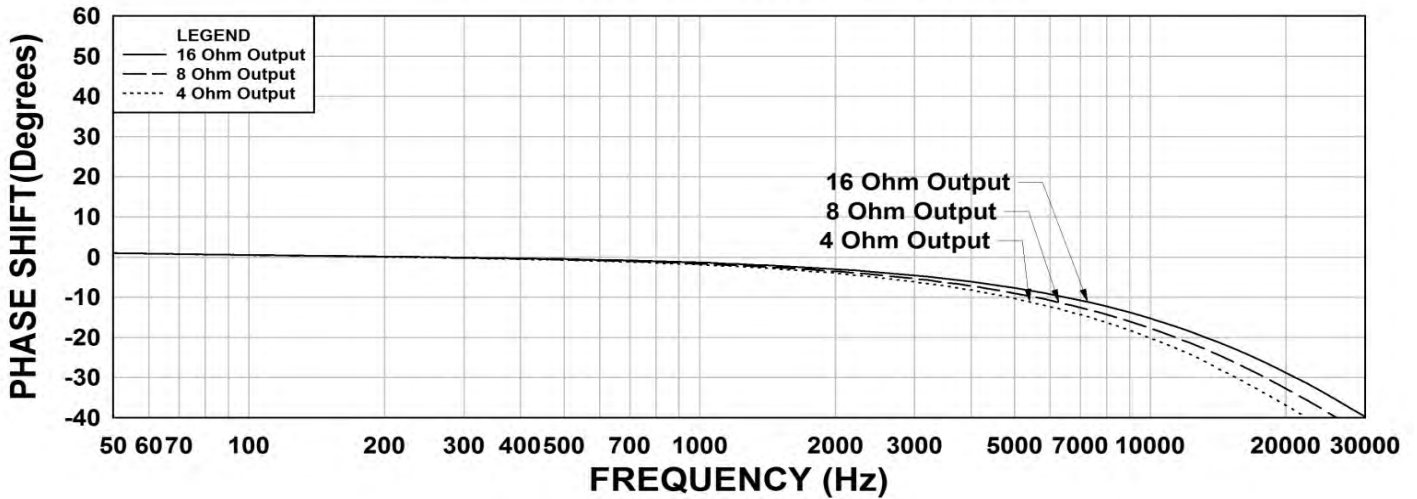
### TYPICAL TEST CIRCUIT



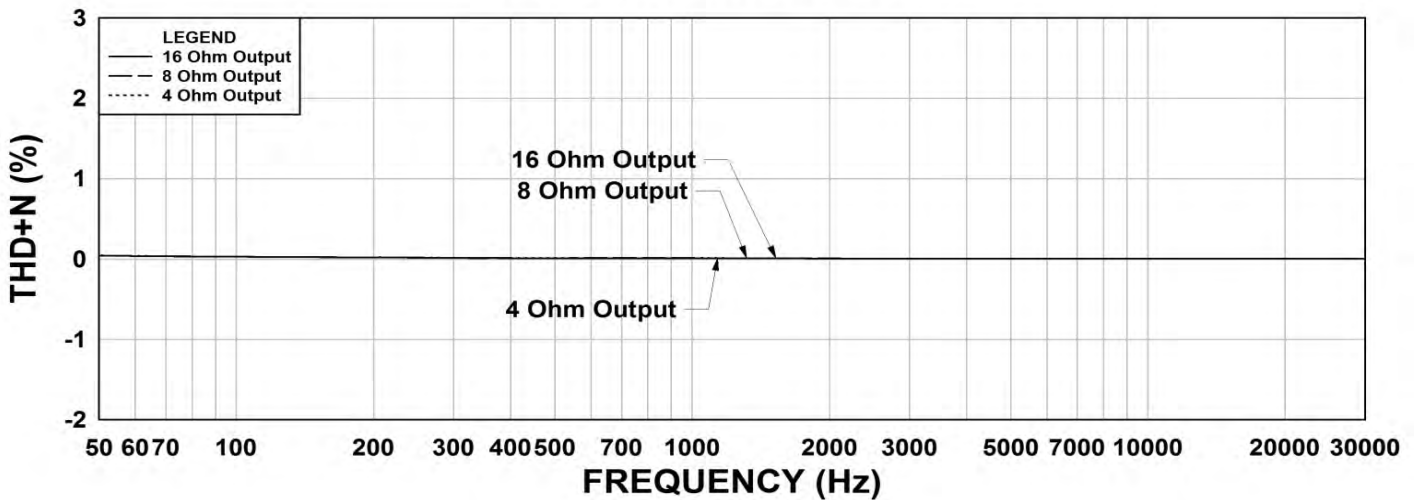
### 1760J Frequency Response RS = 4K Ohms



### 1760J Phase Shift RS = 4K Ohms



### 1760J THD+N RS = 4K Ohms



This drawing and the information in it is the property of Hammond Manufacturing. It may not be reproduced, transmitted or used in any manner whatsoever without the written permission of Hammond Manufacturing. Data subject to change without notice.