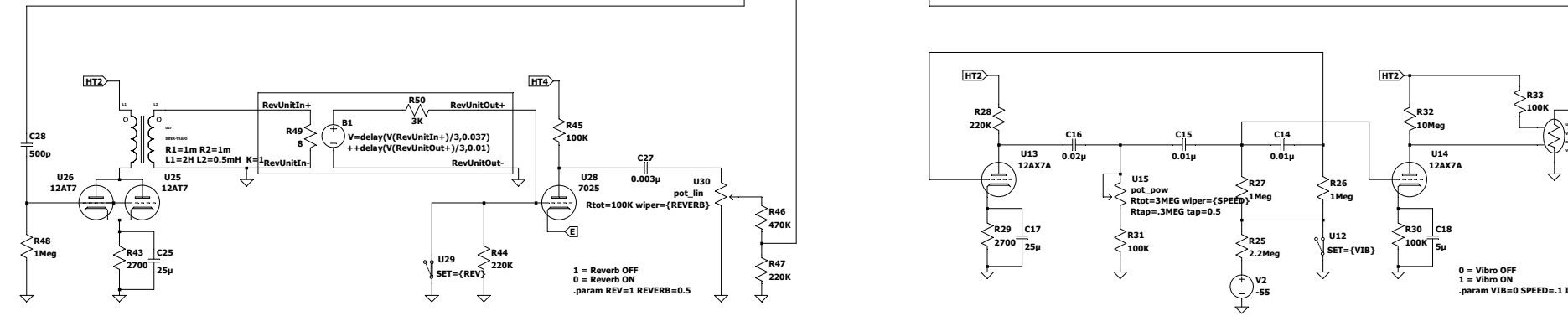
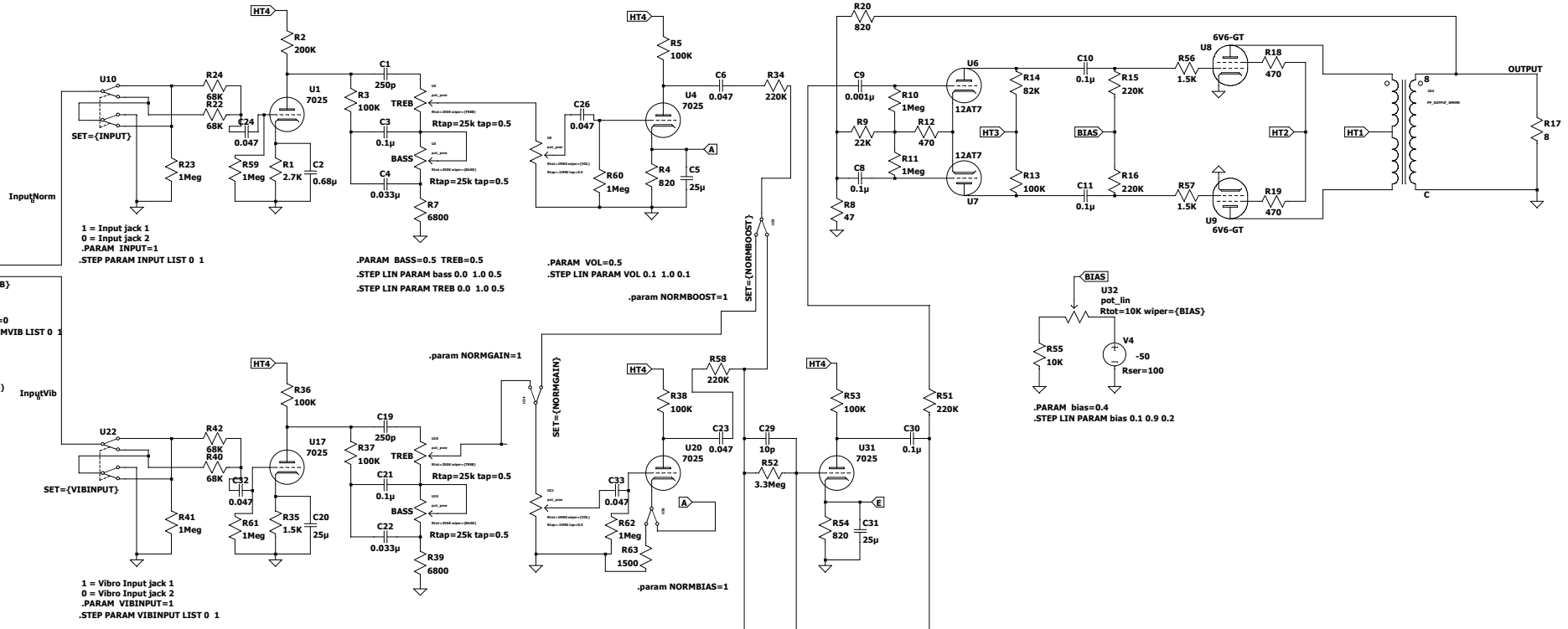
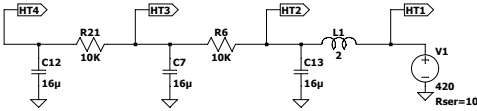


Fender Deluxe-Amp AB763  
LTSpice Schematic Jim Ryan 2012

```
.INC transformer211.INC
.INC transPPC.INC
.INC VCRA.INC
.INC potentiometer_standard.lib
.INC Koren_Tubes.INC
;ac oct 10 20 20k
.tran 0 10ms 0
;op
```



SET={NORMVIB}  
 0 = Normal Input  
 1 = Vibro Input  
 .param NORMVIB=0  
 .STEP PARAM NORMVIB LIST 0 1

SET={VIBINPUT}  
 1 = Vibro Input jack 1  
 0 = Vibro Input jack 2  
 .PARAM VIBINPUT=1  
 .STEP PARAM VIBINPUT LIST 0 1

SET={REV}  
 1 = Reverb OFF  
 0 = Reverb ON  
 .param REV=1 REVERB=0.5