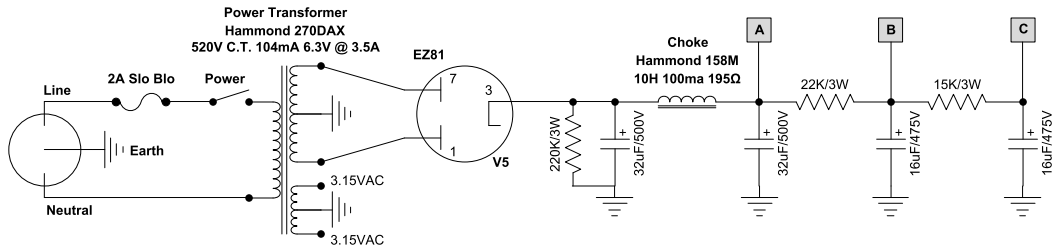
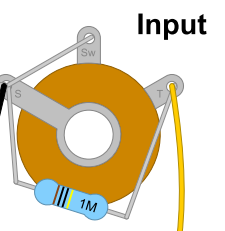
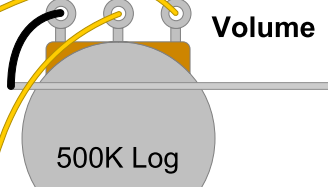
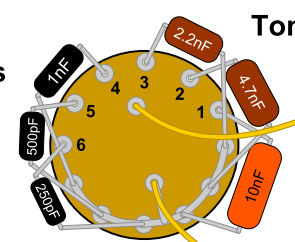


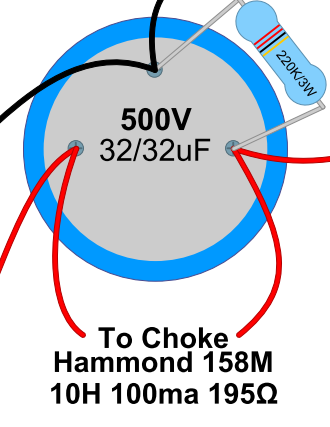
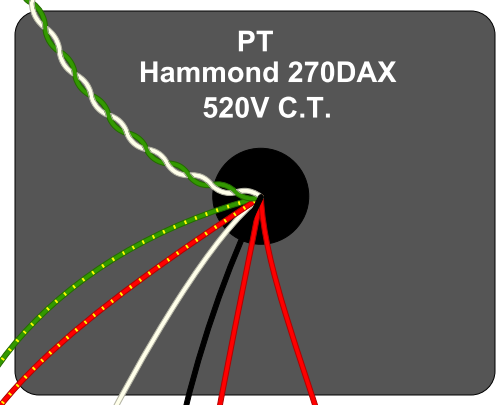
**Single-Channel
VOX AC15**
based on the sluckey AC15
01/22/2022
dwinstonwood



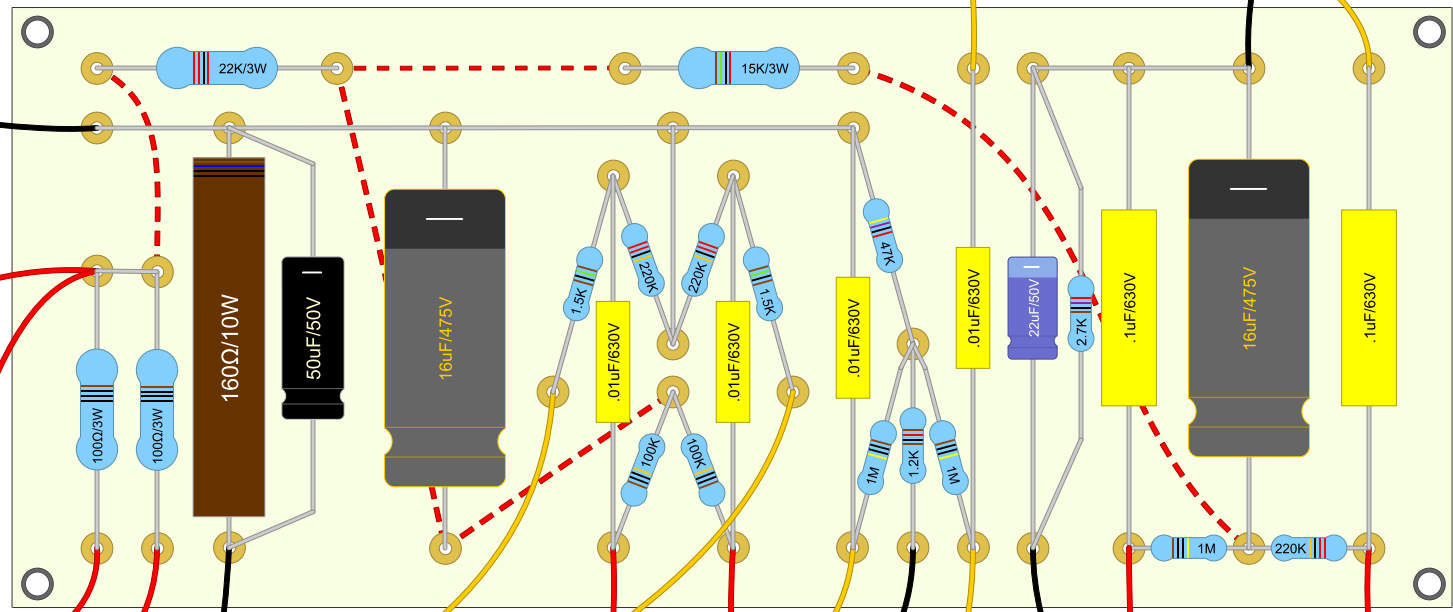
Add 4.7M resistors to prevent pops (see schematic)



To Tube Filaments



To Choke
Hammond 158M
10H 100ma 195Ω



7.5" x 3.125"

EZ81

Use Octal to 9-Pin adaptor plates for EZ81 and EL84's

EL84

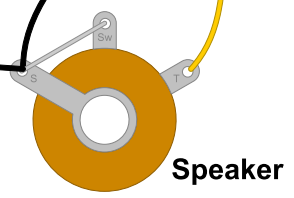
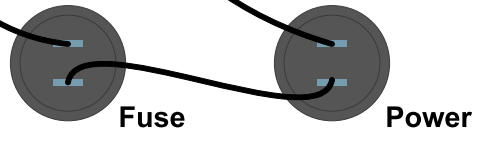
OPT
Hammond 1750E
8,500Ω 15W 8Ω

EL84

12AX7

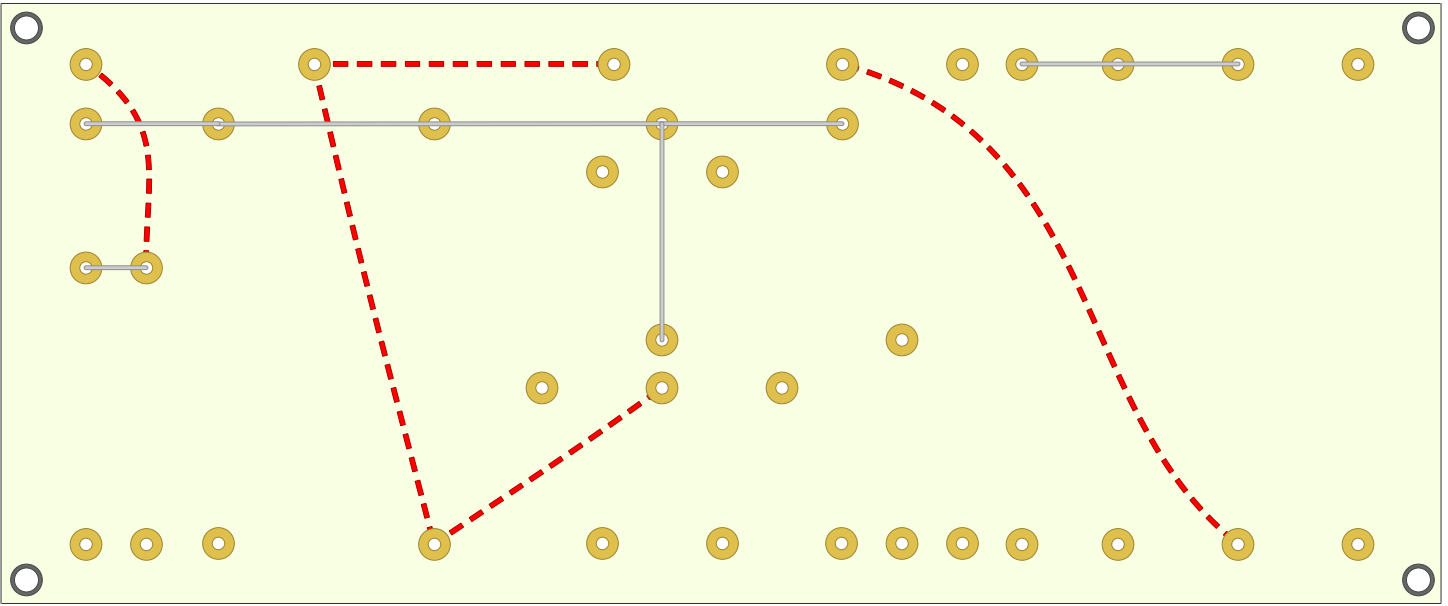
EF86

Fender Princeton 6G2 Chassis
17.25" x 7.125" x 1.75"

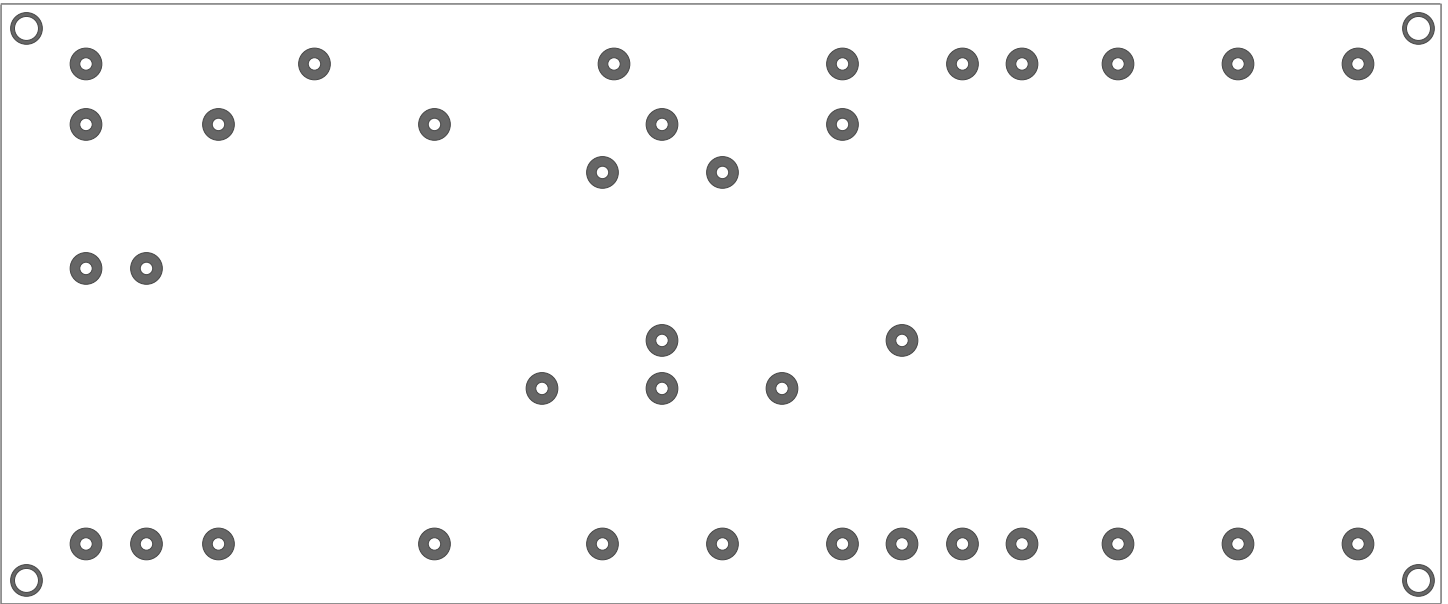


Single-Channel
VOX AC15
based on the slucky AC15
01/22/2022
dwinstonwood

AC15 Single Channel Lacing & Jumper Guide



Drill Guide



7.5" x 3.125"