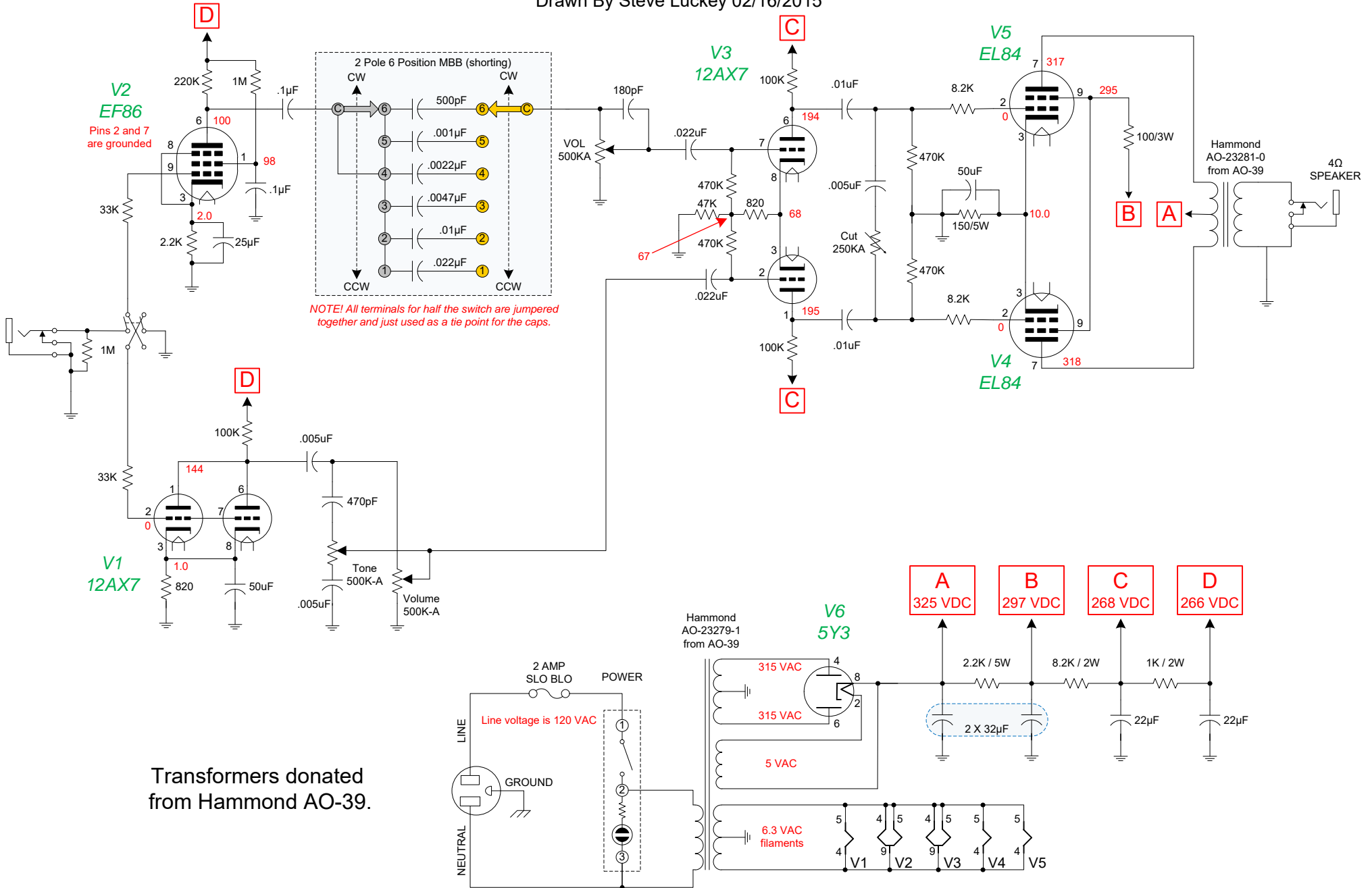


Dual Lite

Vox AC-15 Lite plus 18W Lite IIB

Drawn By Steve Luckey 02/16/2015

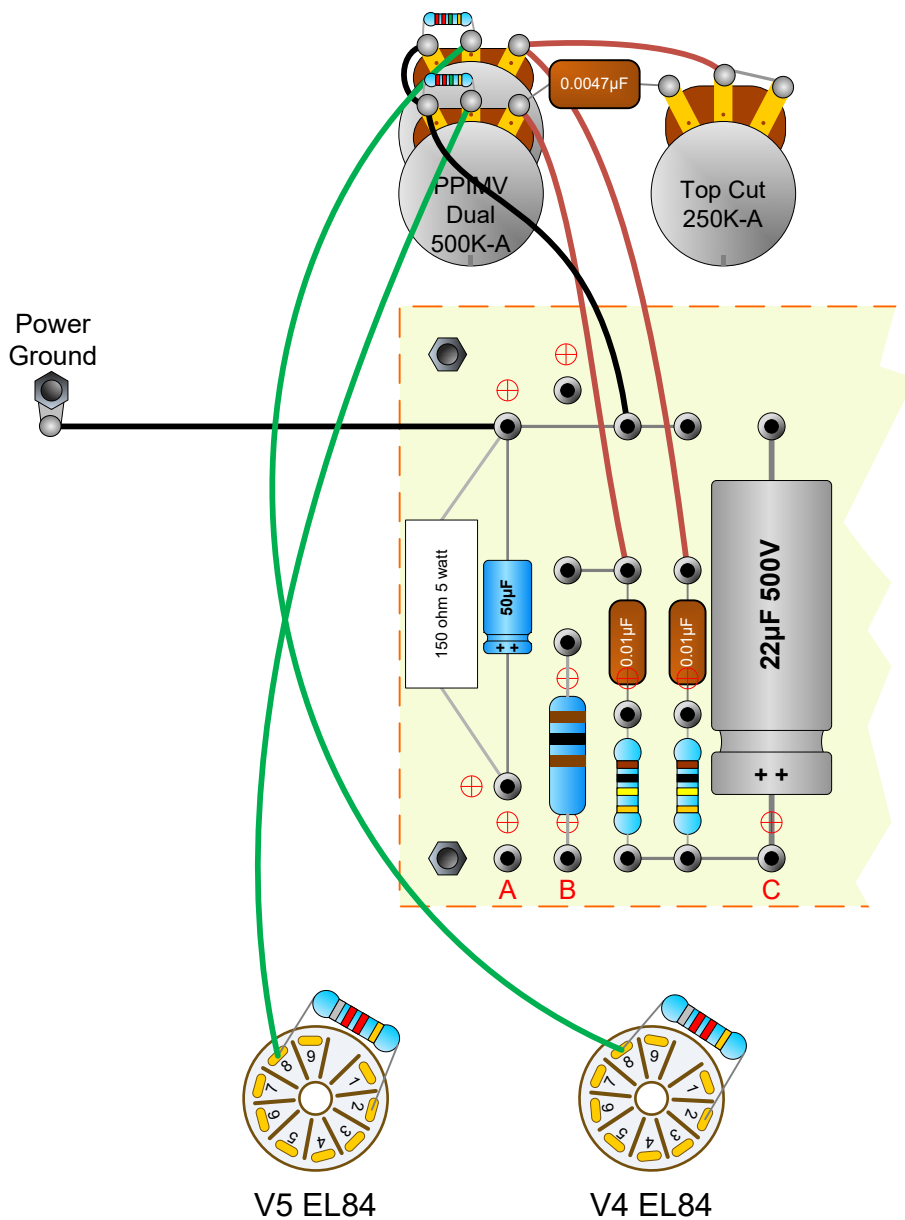


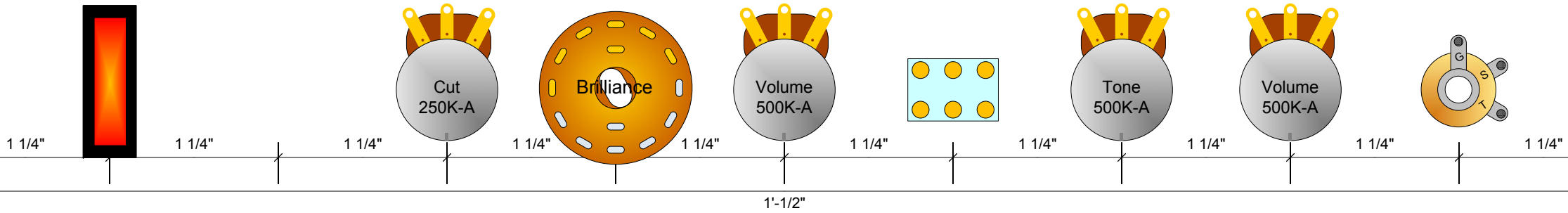
Transformers donated from Hammond AO-39.

I don't have a Master Volume in this amp, but if I wanted one, this is how I would do it.

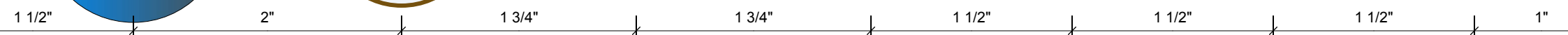
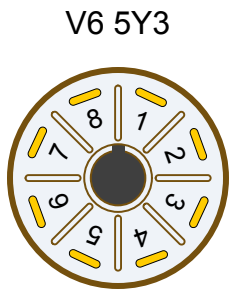
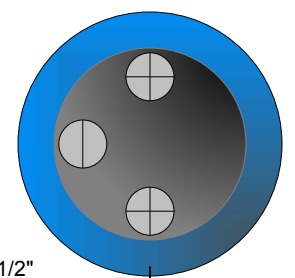
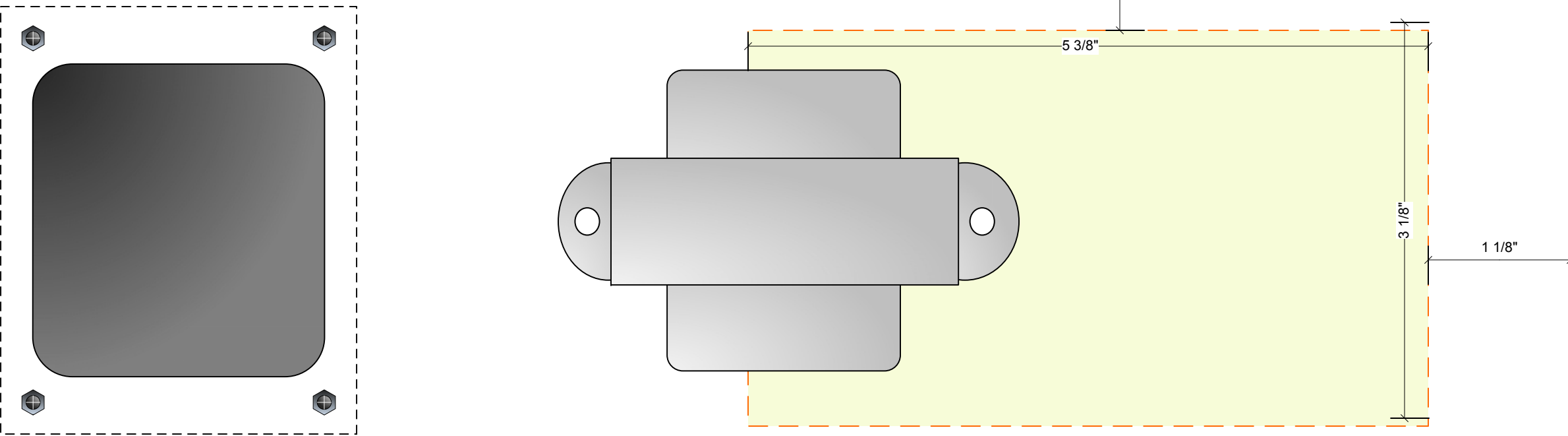
PPIMV mod

1. Remove two 470K grid resistors.
2. Relocate .0047 μ F cap to pots.
3. Connect PPIMV ground to PA Gnd.
4. Use shielded cable if wires are long.





Chassis Dimensions
 12½ " X 6½" X 2½"



DRILL GUIDE

INSTRUCTIONS FOR PRINTING DRILL GUIDE

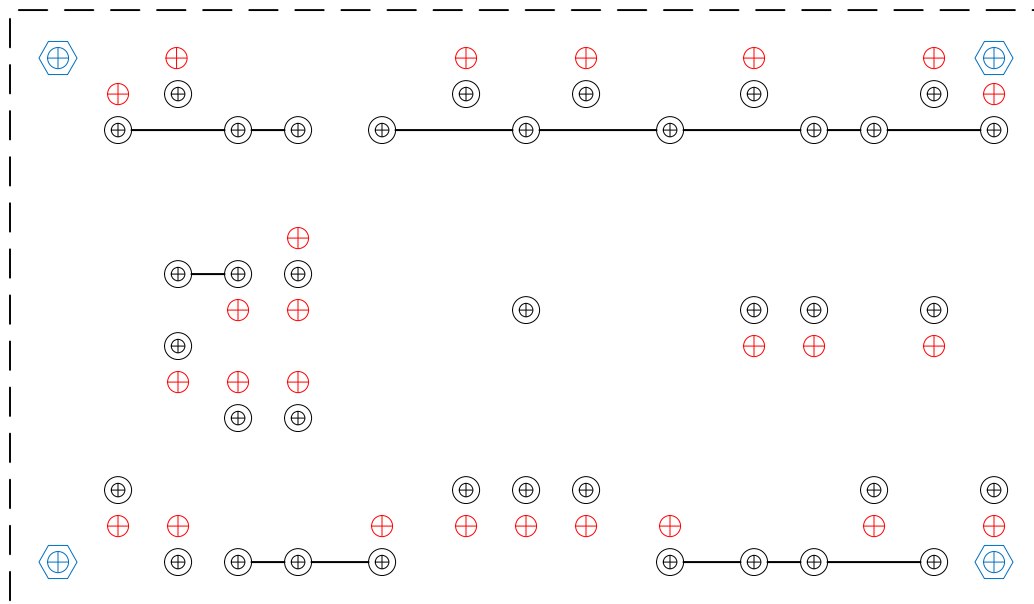
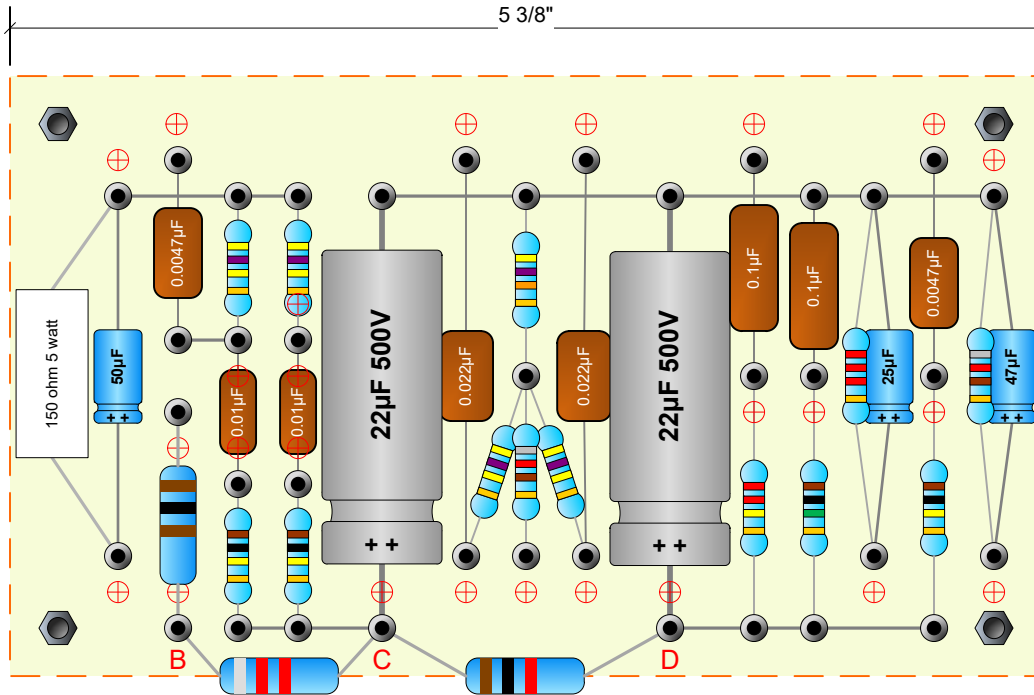
⊕ Turret --- drill size is 3/32"

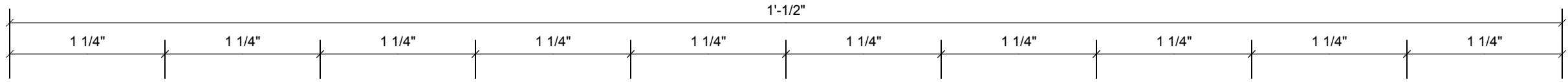
⊕ Standoff – drill size to fit

⊕ Hole for wire pass thru – drill size to fit

----- Dashed lines are underboard jumpers

Board size is 3 1/8" X 5 3/8". Print this drill guide **FULL SIZE** on letter sized paper. Use one template as a drill guide. The other template will be used for installing jumpers. Measure the board length of the printout to verify it is 5 3/8". Attach to blank board using double sided carpet tape. Use a center punch to put a mark at the cross hairs of each turret, standoff, and hole. Use a 3/32" drill bit to drill all holes. Then enlarge holes as needed for screws and wire pass thru.

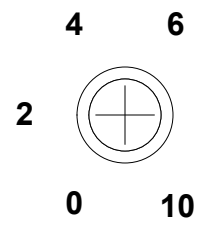




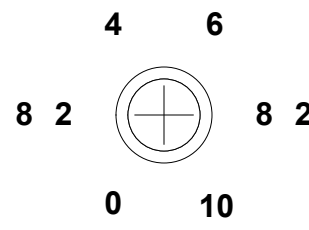
POWER



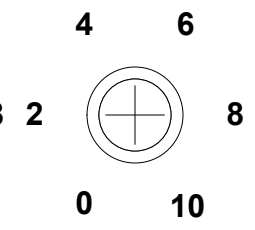
CUT



BRILLIANCE



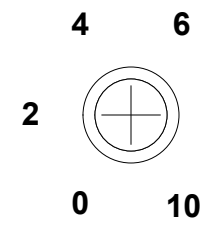
VOLUME



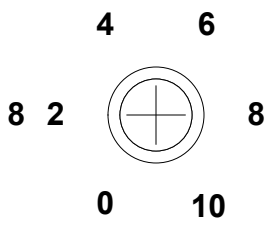
CHANNEL



tone



VOLUME



INSTRUMENT



VOX AC-15

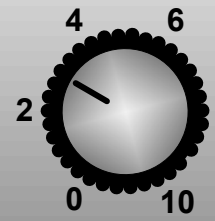
MARSHALL 18W

POWER

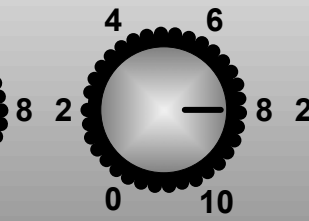


**DUAL
LITE**

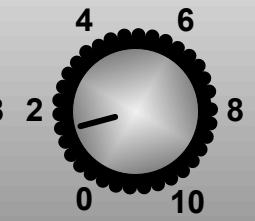
CUT



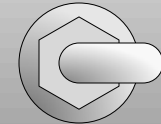
BRILLIANCE



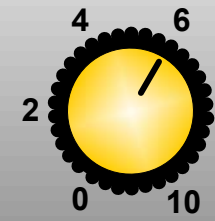
VOLUME



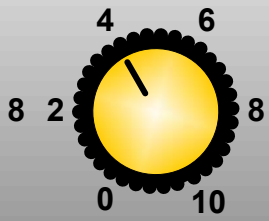
CHANNEL



tone



VOLUME

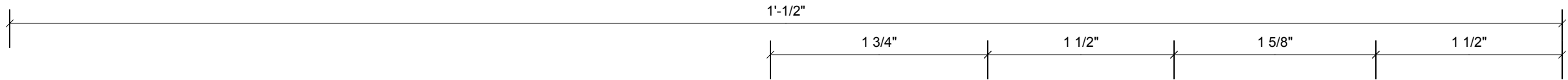


INSTRUMENT



VOX AC-15

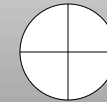
MARSHALL 18W



4Ω SPEAKER



2 AMP SLOW



POWER



4Ω SPEAKER



2 AMP SLOW



POWER

